

PROJECT: Revised Dilgard Plat

Made by WEQ Date 10/12/61

Comm. No. 358

Chkd. by _____ Date _____

71413

REC'D October 21-1961

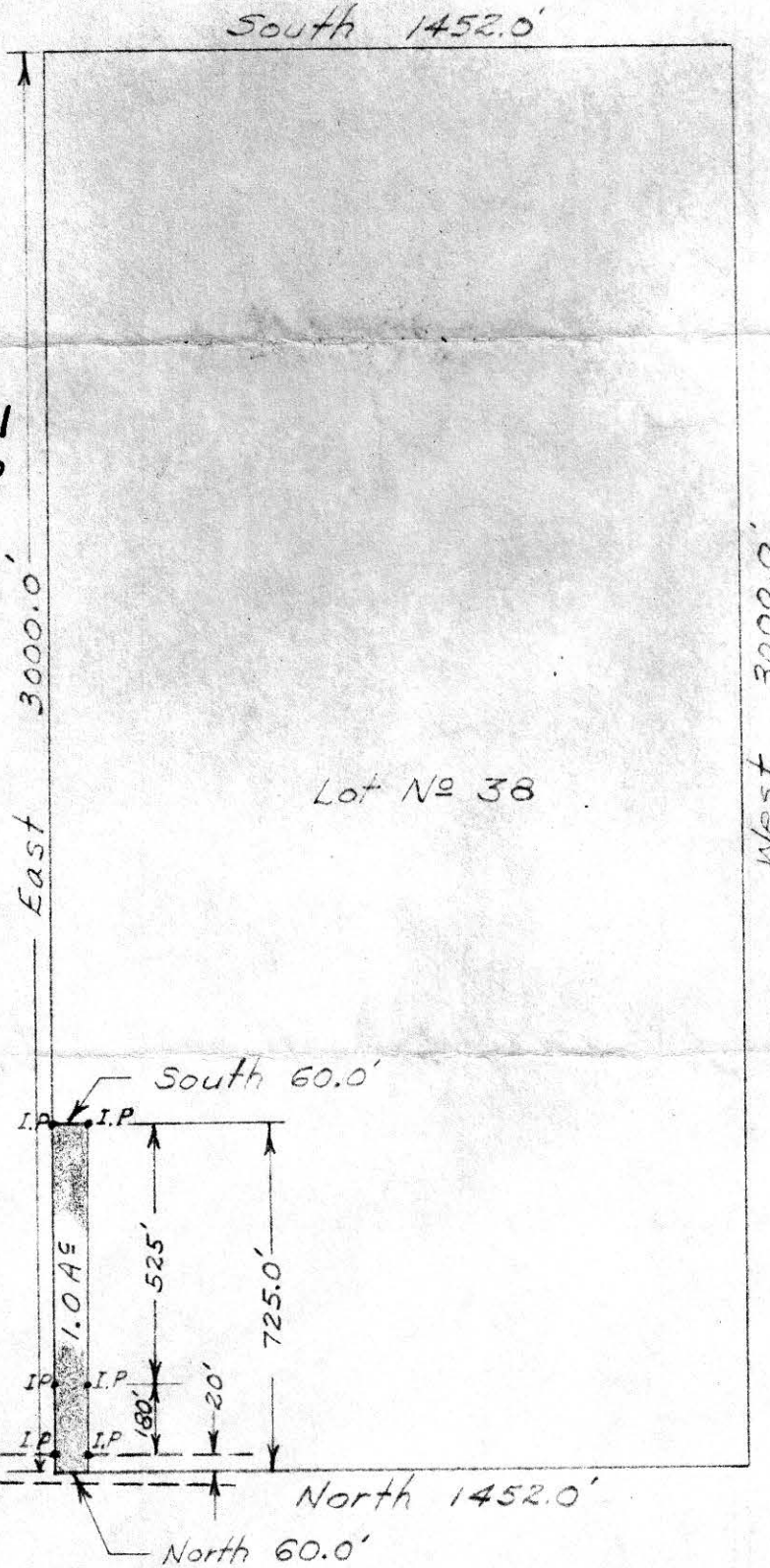
AT 10:20 CLOCK H.M.

RECORDED October-23-61

HOLMES CO. Plat VOL. 3 PG. 47B

FEE: \$ 1.00

Erwin Ludewig RECORDER



Scale 1" = 400'

REC'D: *Nov 21 1961*
AT *2:06* O'CLOCK *P.M.*
RECORDED: *November 21 - 1961*
HOLMES CO. VOL 3 PG. 47B
FEE: \$1.00
Ership Ruderman RECORDER

N.W. Cor. of the
N.W. Qr. of Section 5

CEM.

John J. S. Yoder

MAP
SHOWING LOCATION
OF A PARCEL OF LAND
DEEDED BY
JOHN J. S. YODER
TO

MELVIN J. YODER

Section 5, Township 15, Range 12
Salt Creek Township, Holmes County
Ohio

Scale 1" = 100 ft.

April 1960

Drawn from a
survey by

William Sellner
Reg. Sur. No. 3915

Paul P. Richeson

Township Road 187

S 2° 45' W
892'

Lane

592'

S 87° 15' E

S 2° 45' W
130'

Pipe

335'

130'

S 2° 45' W
130'

1 Acre
Melvin J. Yoder

335'

S 87° 15' E

1 Acre

335'

N 87° 15' W

John J. S. Yoder

Jonas A. Schrock



No Buildings