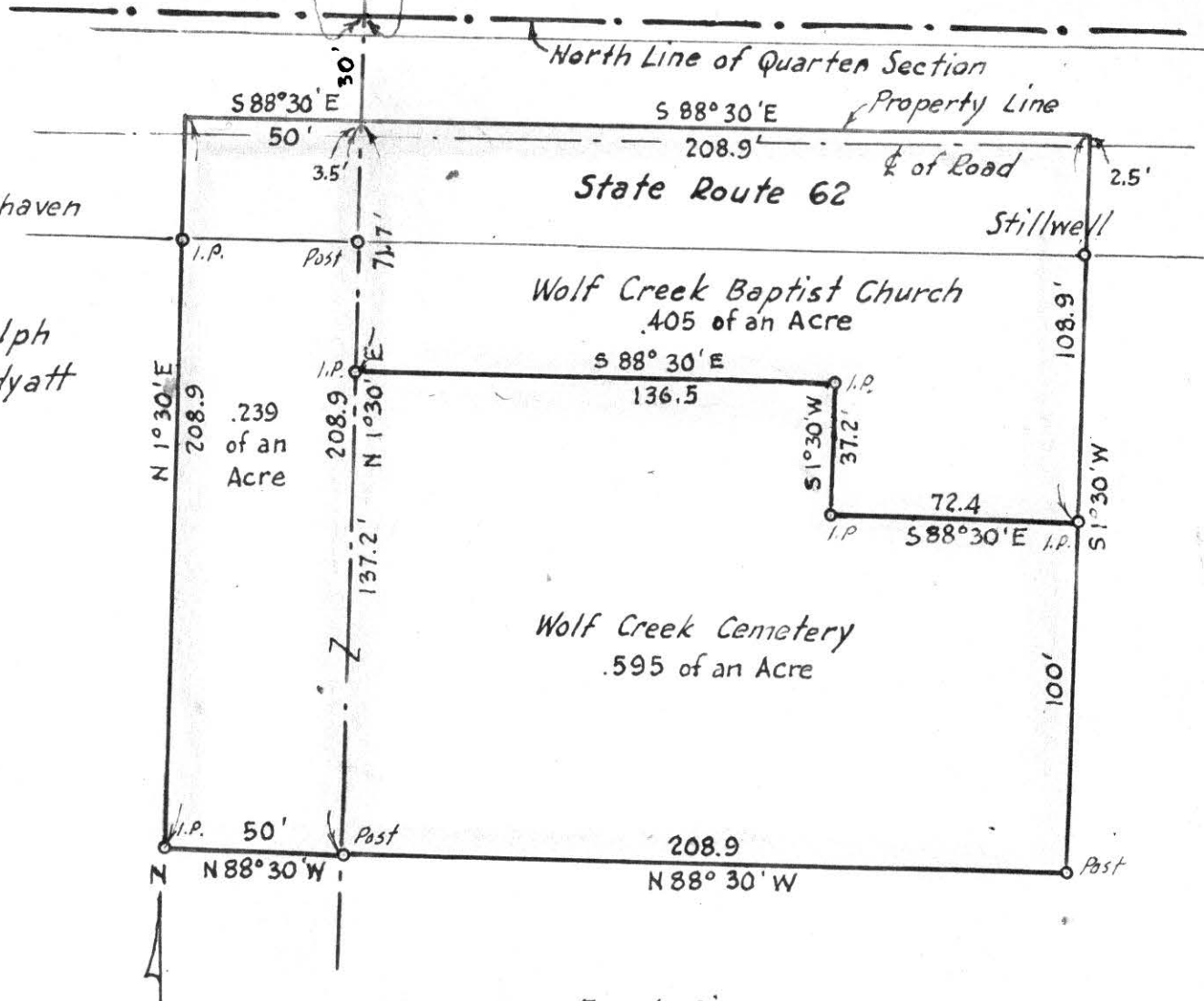


N.E. Cor. of the S.W. Qr. of Section 21

N.W. Cor. of the S.E. Qr. of Section 21



MAP
SHOWING LOCATION
OF THE
WOLF CREEK
CEMETERY &
BAPTIST CHURCH PROPERTY
IN

Section 21, Township 8, Range 9,
Richland Township Holmes County
Ohio

Scale 1" = 50 ft.

May 1961

Drawn from a
survey by

William Sallner
Reg. Sur. No. 3915

Frank Giaugue
71401

REC'D: October 19-1961

AT 2:00 O'CLOCK P.M.

RECORDED: October 20-1961

HOLMES CO. Plat VOL. 3 PG. 46B

FEE: \$1.00

William Sallner RECORDER



13 1/4 X 10 1/4

71331

REC'D: October 7-1961
AT 8:45 O'CLOCK A.M.
RECORDED: Oct. 10, 1961
HOLMES CO. Vol. 3 PG. 46B
FEE: \$ 1.37

Carolyn Anderson RECORDER

MAP
SHOWING DIVISION
OF THE
FRED J. BROWN, et al PROPERTY
IN
Section 6 Township 9, Range 5
Berlin Township Holmes County
Ohio

Scale 1" = 100 ft. Aug. 1961

Drawn from a
survey by

William Sellner
Reg. Sur. No. 3915

