

71202

REC'D: September 18-1961

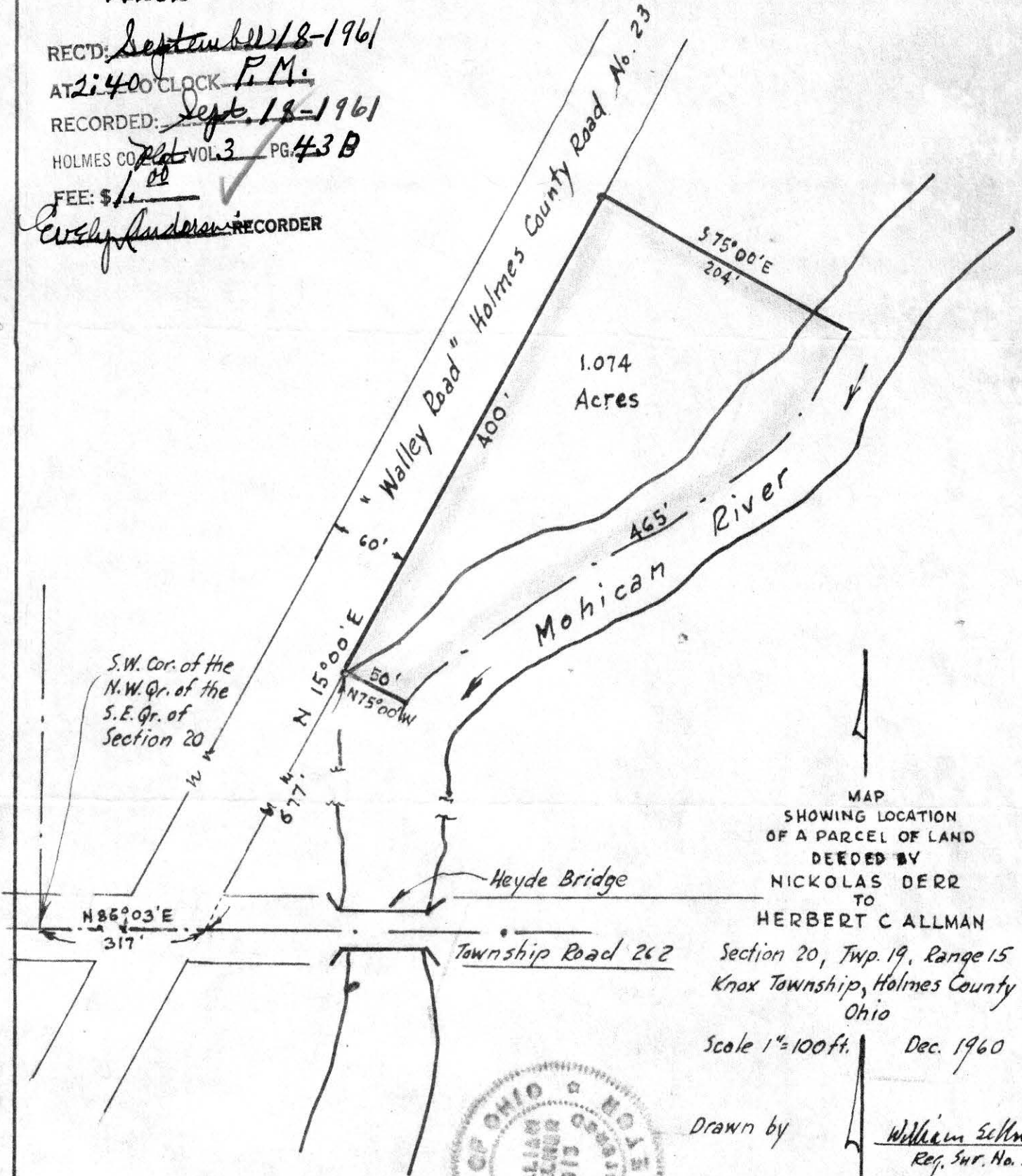
AT 2:40 CLOCK P.M.

RECORDED: Sept. 18-1961

HOLMES CO. Vol. 3 PG. 43 B

FEE: \$ 1.00

Crosby Anderson RECORDER



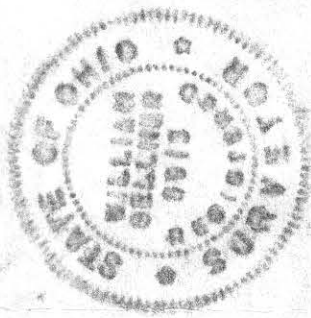
MAP
 SHOWING LOCATION
 OF A PARCEL OF LAND
 DEEDED BY
 NICKOLAS DERR
 TO
 HERBERT C ALLMAN

Section 20, Twp. 19, Range 15
 Knox Township, Holmes County
 Ohio

Scale 1"=100ft. Dec. 1960

Drawn by

William Seltner
 Reg. Sur. No. 3915



71451

REC'D: October 30-1961

AT 2:00 O'CLOCK P.M.

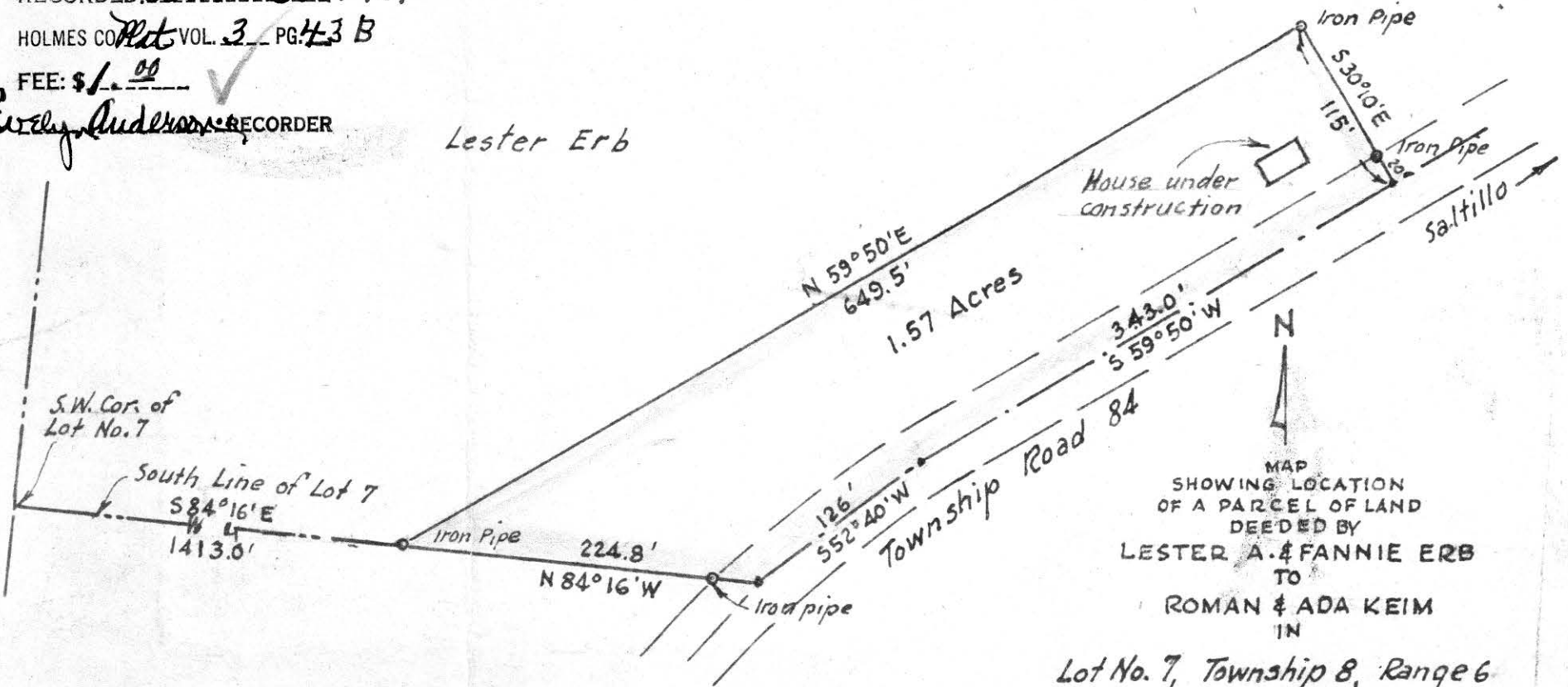
RECORDED: October 31-1961

HOLMES CO. Map VOL. 3 PG. 43 B

FEE: \$ 1.00

Curly Anderson RECORDER

Lester Erb



MAP
SHOWING LOCATION
OF A PARCEL OF LAND
DEEDED BY
LESTER A. & FANNIE ERB
TO
ROMAN & ADA KEIM
IN

Lot No. 7, Township 8, Range 6
Mechanic Township, Holmes County
Ohio

Scale 1" = 100 ft.

Oct. 1961

Drawn from a
survey by

William Sellner
Reg. Sur. No. 3915



12" x 10 1/3"

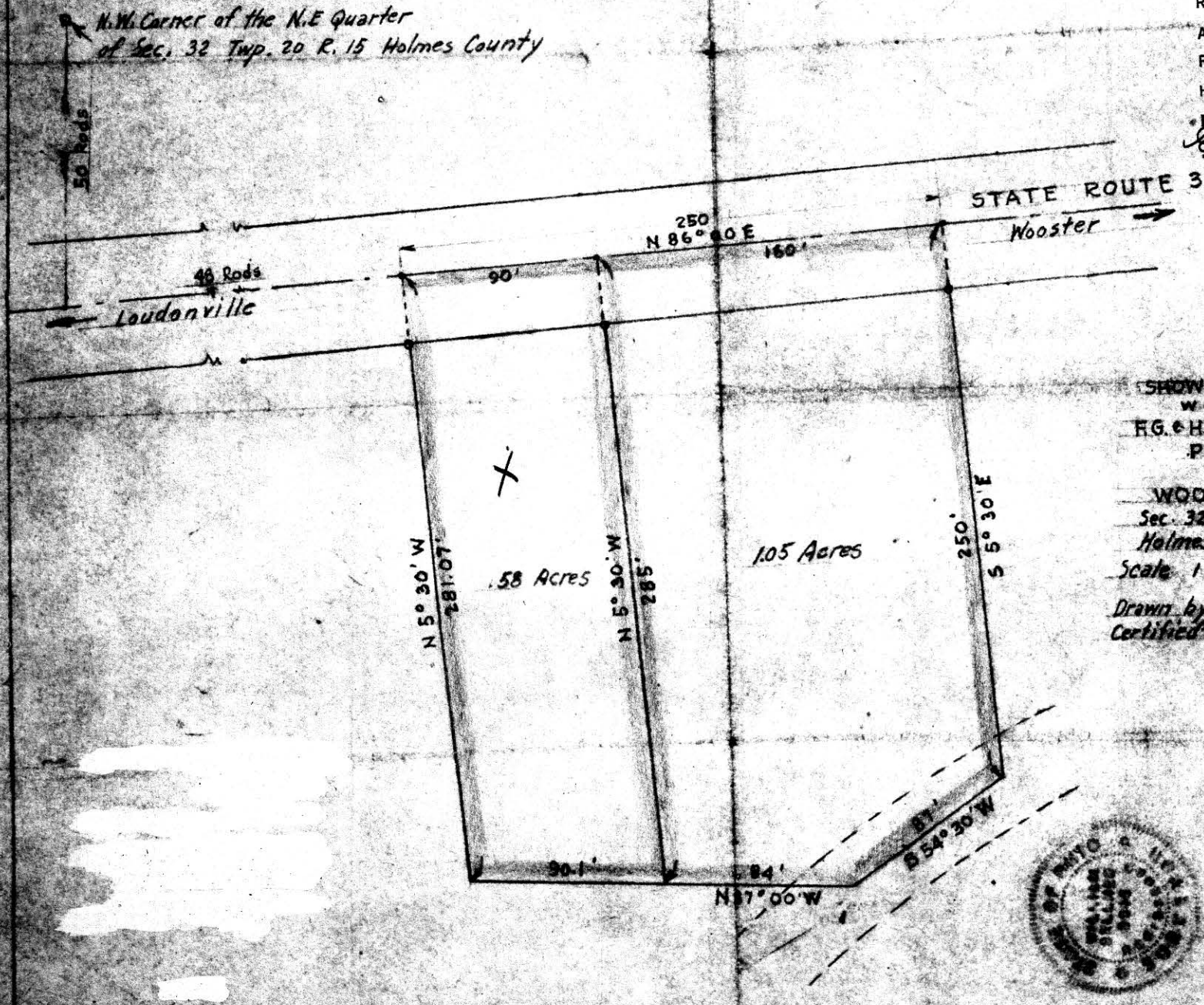
Vol. 3. PAGE 43-B

71139

N.W. Corner of the N.E Quarter
of Sec. 32 Twp. 20 R. 15 Holmes County

RECD: Sept. 9-1961
AT 9:50 CLOCK P.M.
RECORDED: Sept. 11-1961
HOLMES CO. Vol. 3 PG. 43B
FEE: \$1.24

Erlye Adams RECORDER



MAP
SHOWING DIVISION
W — OF — E
EG. C. H. W. HUTCHISON
PROPERTY
ON
WOOSTER ROAD
Sec. 32 Twp. 20 R. 15
Holmes County Ohio
Scale 1" = 50' Nov. 1953

Drawn by and
Certified Correct

William Sellman
Reg. Sur. 3319

