

71075

REC'D: August 31-1961

AT 1:50 O'CLOCK P.M.

RECORDED: August 31-1961

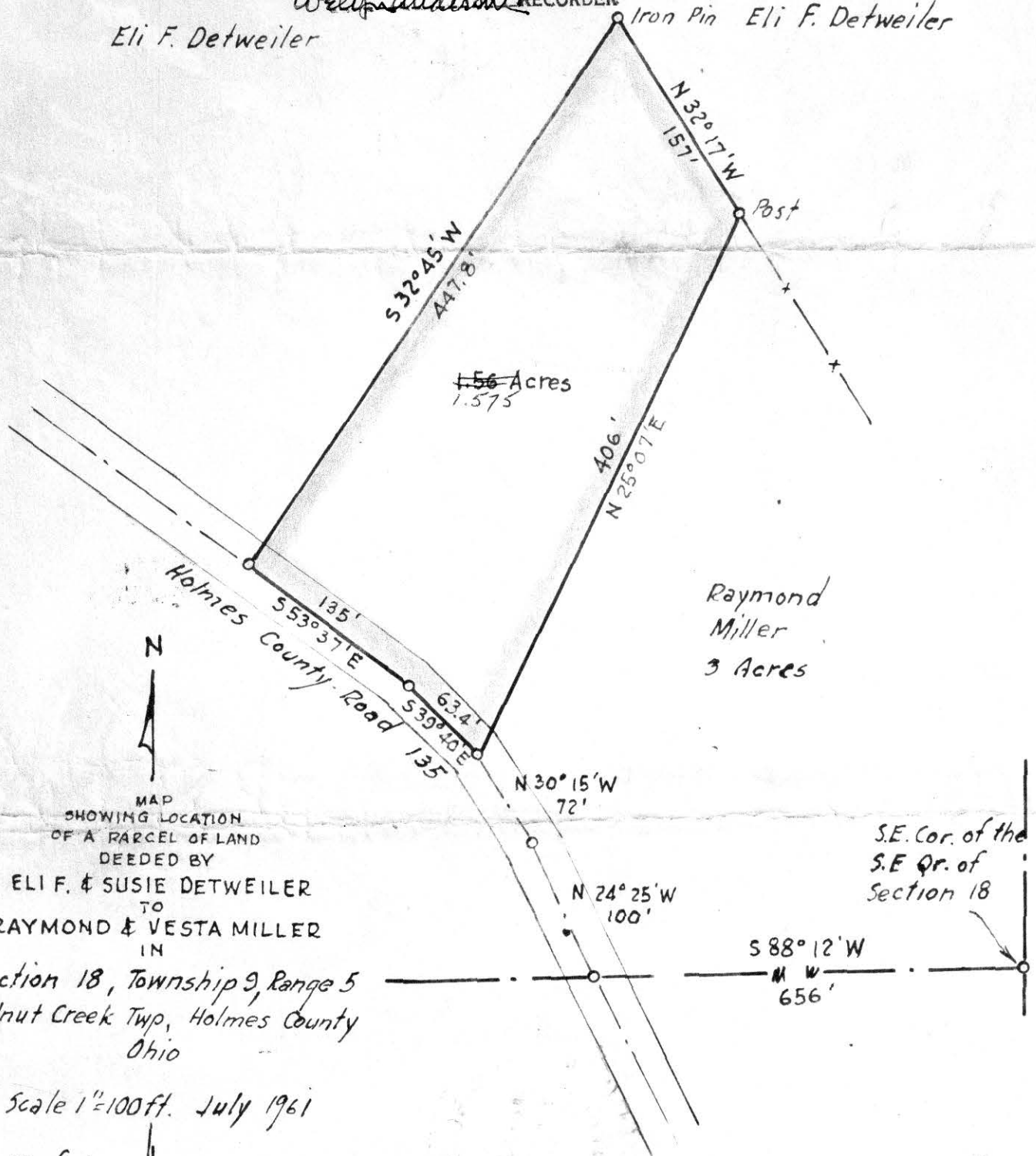
HOLMES CO. VOL. 3 PG. 41 B

FEE: \$1.00

*Evelyn Anderson* RECORDER

Eli F. Detweiler

Iron Pin Eli F. Detweiler



Raymond Miller  
3 Acres

S.E. Cor. of the  
S.E. Qr. of  
Section 18

MAP  
SHOWING LOCATION  
OF A PARCEL OF LAND  
DEEDED BY

ELI F. & SUSIE DETWEILER  
TO  
RAYMOND & VESTA MILLER  
IN

Section 18, Township 9, Range 5  
Walnut Creek Twp, Holmes County  
Ohio

Scale 1"=100ft. July 1961

Drawn from  
a survey by

*William Sellner*  
Reg. Sur. No. 3915

No Buildings

C.A. & C.R.R.  
662.64' N 0° 28' E

71089  
584° 24' E  
325'

REC'D: September 1 - 1961  
AT 4:15 O'CLOCK - P.M.  
RECORDED: Sept. 5, 1961  
HOLMES CO. PLAT VOL 3 PG. 41-B  
FEE: \$ 1.00  
Carol Anderson RECORDER

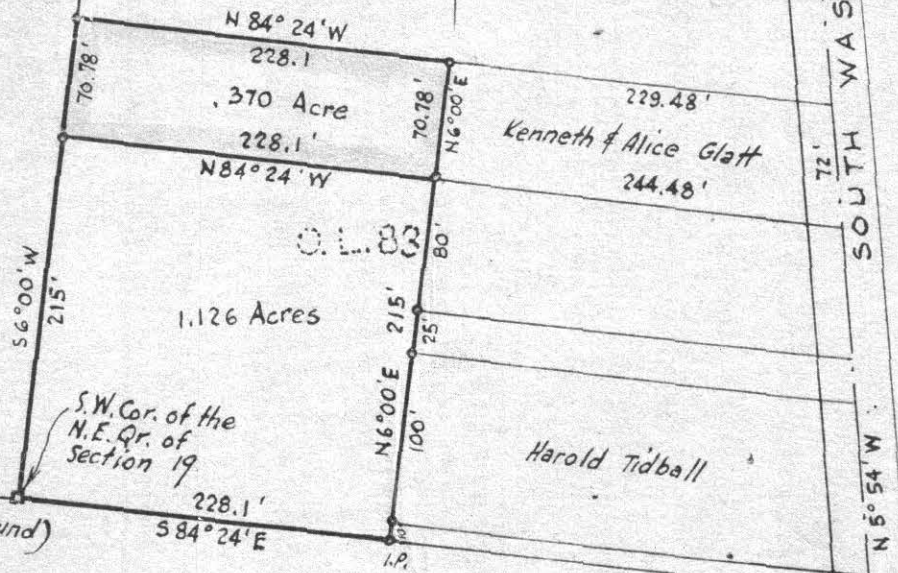
MAP  
SHOWING DIVISION  
OF  
THE BRIAR HILL STONE COMPANY  
PROPERTY  
IN  
Section 19, Township 9, Range 7  
Hardy Township, Holmes County  
Ohio

Scale 1" = 100 ft. Aug. 1961

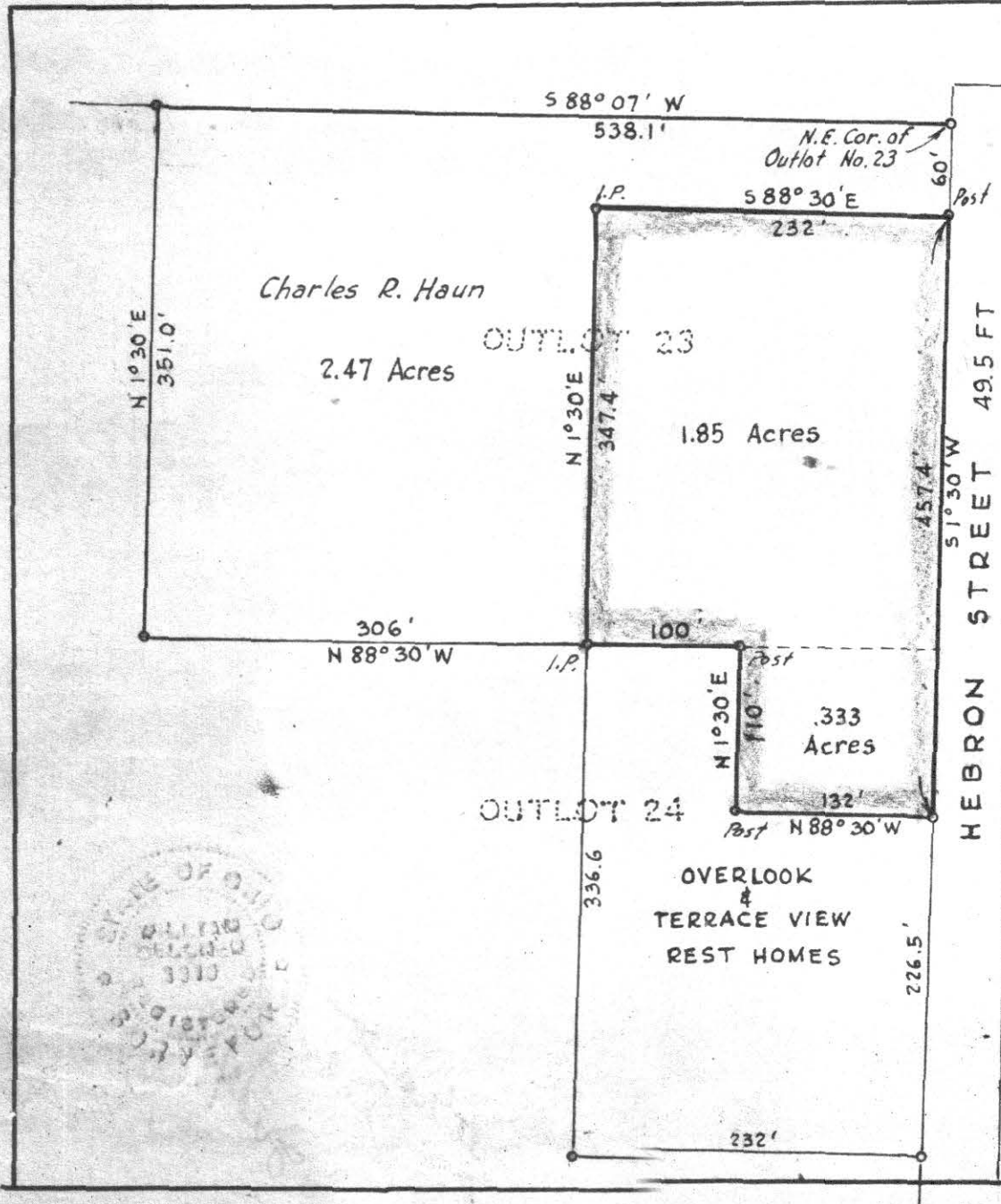
Drawn from a  
survey by

William Sellner  
Reg. Sur. No. 3915

O.L. 82



71115



REC'D: *September 7-1961*  
 AT 11:50 O'CLOCK *H.M.*  
 RECORDED: *Sept. 11-1961*  
 HOLMES CO. *Vol. 3* PG. *41 B*  
 FEE: \$ *1.00*  
*Wayland* RECORDER

N  
 MAP  
 SHOWING LOCATION  
 OF  
 A PARCEL OF LAND  
 DEEDED BY  
 CHARLES R. HAUN  
 TO

ON  
 HEBRON STREET  
 Being part of Outlots 23 & 24  
 IN THE  
 Village of Millersburg  
 Hardy Township, Holmes County  
 Ohio

Scale 1" = 100 ft. *May 1961*

Drawn from a survey by *William Sellner*  
 Reg. Sur. No. 3915

