

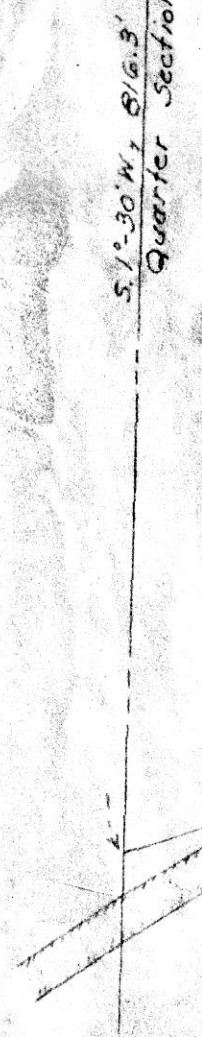
11" x 21"

71026

REC'D. August 21-1961  
AT 12 O'CLOCK P.M.  
RECORDED: August 22-1961  
HOLMES CO. VOL. 3 PG. 408  
FEE: \$2.50  
C. Anderson RECORDER

N.W. corner of the S.E. Quarter  
of Sec. 19, T.8, R.5, USML.

51°30'W, 816.3'  
Quarter Section Line



N. 71°-39' E., 509.6'

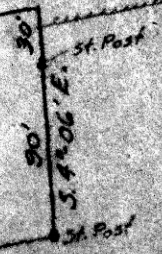
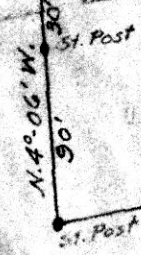
N. 78°-47' E., 807.4'

STATE ROUTE #643

N. 78°-47' E., 511.9'

1.40 acres

S. 78°-47' W., 511.9'



PLAT OF A 1.40 AC. TRACT TO BE  
CONVEYED BY JONAS D. TROYER  
— CLARK TWP., HOLMES CO. —

Scale 1"=100'

Edward F. Gasser  
Reg. Surv. #4681

New Philadelphia, Ohio  
April 25, 1961

