

REC'D: July 13-1961

AT 9:25 O'CLOCK A.M.

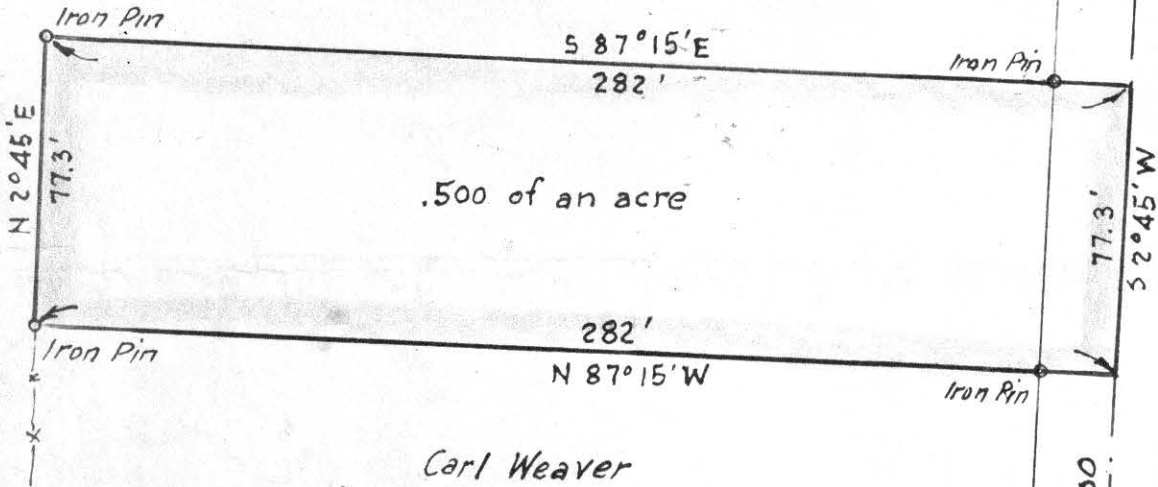
RECORDED: July 14, 1961

HOLMES CO. Plat VOL. 3 PG. 368

FEE: \$1.00

Ira Kline

C. W. Anderson RECORDER



MAP  
 SHOWING LOCATION  
 OF A PARCEL OF LAND  
 DEEDED BY  
 IRA KLINE  
 TO  
 SAM GILT

IN  
 Lot No. 7, 4<sup>th</sup> Qr. Twp., Twp 9, R. 8  
 Monroe Township, Holmes Ct.  
 Ohio.

Scale 1" = 50 ft.

July 1961

Drawn from a survey by

William Sellner  
 Reg. Sur. No. 3915



S.E. Cor. of Lot No. 7

County Road 314

N 2°45' E 1097.4'

Holmes County Road 400

Harold Hanna

9° x 15°

60824

Samuel D. Yoder

S 85° 04' E  
496.1'

REC'D: July 17-1961  
AT 9:55 O'CLOCK: H.M.  
RECORDED: July 18-1961  
HOLMES CO. VOL. 3 PG 36B  
FEE: \$1.35  
C. A. Anderson RECORDER

To Millersburg

Port Washington Road

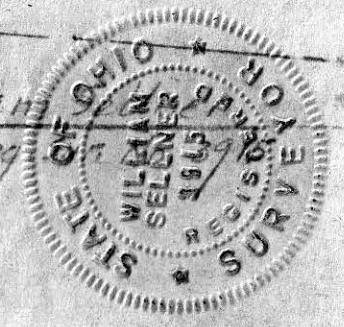


MAP  
SHOWING LOCATION  
OF A  
PARCE OF LAND  
ON THE  
SAMUEL D. YODER FARM  
DEEDED TO  
HAROLD & JULIA EZRI

Section 20, Township, 9, Range 7  
Hardy Township, Holmes County  
Ohio

Scale 1" = 50ft. July 1957

Drawn by and  
Certified Correct William



3 Acres

331.5'  
S 4° 56' W

Samuel D. Yoder

284.9'  
N 85° 04' W

Robert E. Kasner

S.E. Cor. of the N.W.  
Qr. of Section 20  
N 85° 04' W  
654'