

E. E. Mullet

MT. HOPE

Part of Hall's Addition
to the Town of Middletown
(now known as Mt. Hope)

E. E. Mullet

Parcel deeded by E.E. Mullet
to J. J. Nisley

North 1/2 of O.L. 81
J.J. Nisley
297.0'
588°05'E
Dennis Weaver
South 1/2 of O.L. 81

588°00'E
Post
33
68.7'
31.6'
587°00'E
227.8'
I.P.
67.4'
53°00'W
.395 Acres

246.6
225.8'
N3°00'E
132'
100.4'
Post
229.2'
585°00'W
297.0'
Post
1.10 Acres
85 Acres
155.1
135.8
53°00'W
I.P.
325.5
N87°00'W
I.P.

Parcel Deeded by
Edwin Borntreger
to
J.J. Nisley

Edwin Borntreger

60705



MAP
SHOWING LOCATION
OF
TWO PARCELS OF LAND
ACQUIRED BY
J. J. NISLEY
IN

Section 12, Township 14 Range 12
Salt Creek Township, Holmes County
Mt. Hope, Ohio

Scale 1" = 100 ft.

May 1961

Drawn by

William Sellner
Reg. Sur. No. 3915

REC'D: June 20-1961
AT 1:25 O'CLOCK P.M.
RECORDED June 22-1961
HOLMES CO. REG. VOL. 3 PG 34B
FEE: \$1.⁰⁰

Cosby Anderson RECORDER

S.W. Cor. of fractional
section 12

Greenville Treaty Line

Holmes County Road 77
West Line of Section 12

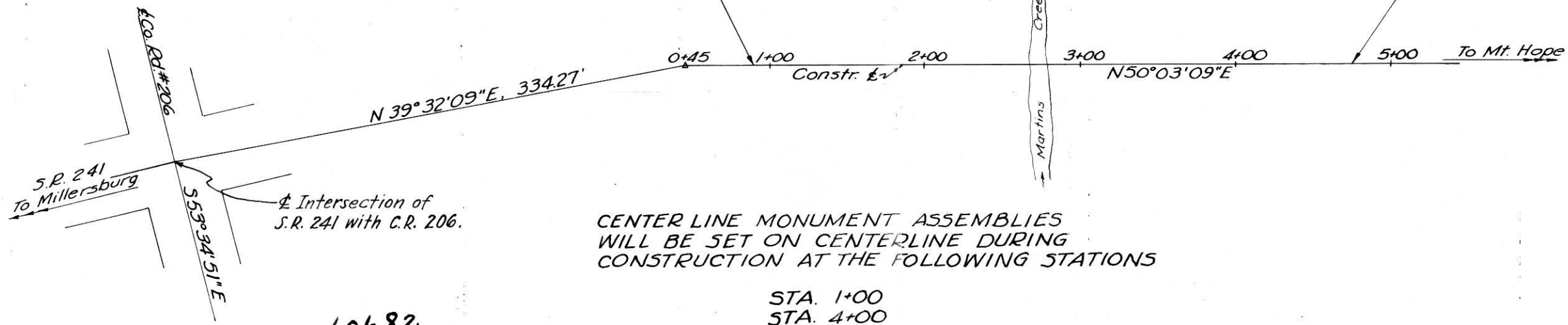
N 1°55'E
1044'

LOCATION PLAN HOL-241-5.41 1961 SCALE: 1" = 50'

UNINCORPORATED
VILLAGE OF BENTON
SALT CREEK TWP. - MILITARY LOT 19 - T.10 - R.12

BEGIN PROJECT
STA. 0+90

END PROJECT
STA. 4+75



Intersection of
S.R. 241 with C.R. 206.

CENTER LINE MONUMENT ASSEMBLIES
WILL BE SET ON CENTERLINE DURING
CONSTRUCTION AT THE FOLLOWING STATIONS

STA. 1+00
STA. 4+00

60682

REC'D: June 16, 1961
AT 13⁰⁰ O'CLOCK P.M.
RECORDED: June 20, 1961
HOLMES CO. PLAT VOL. 3 PG. 34B
FEE: \$ 3⁰⁰

Evelyn Anderson, RECORDER

I hereby certify that this Plat
is correct to the best of my
knowledge and belief.

Wm P McKenna
Division Engineer

6-6-61
Date

