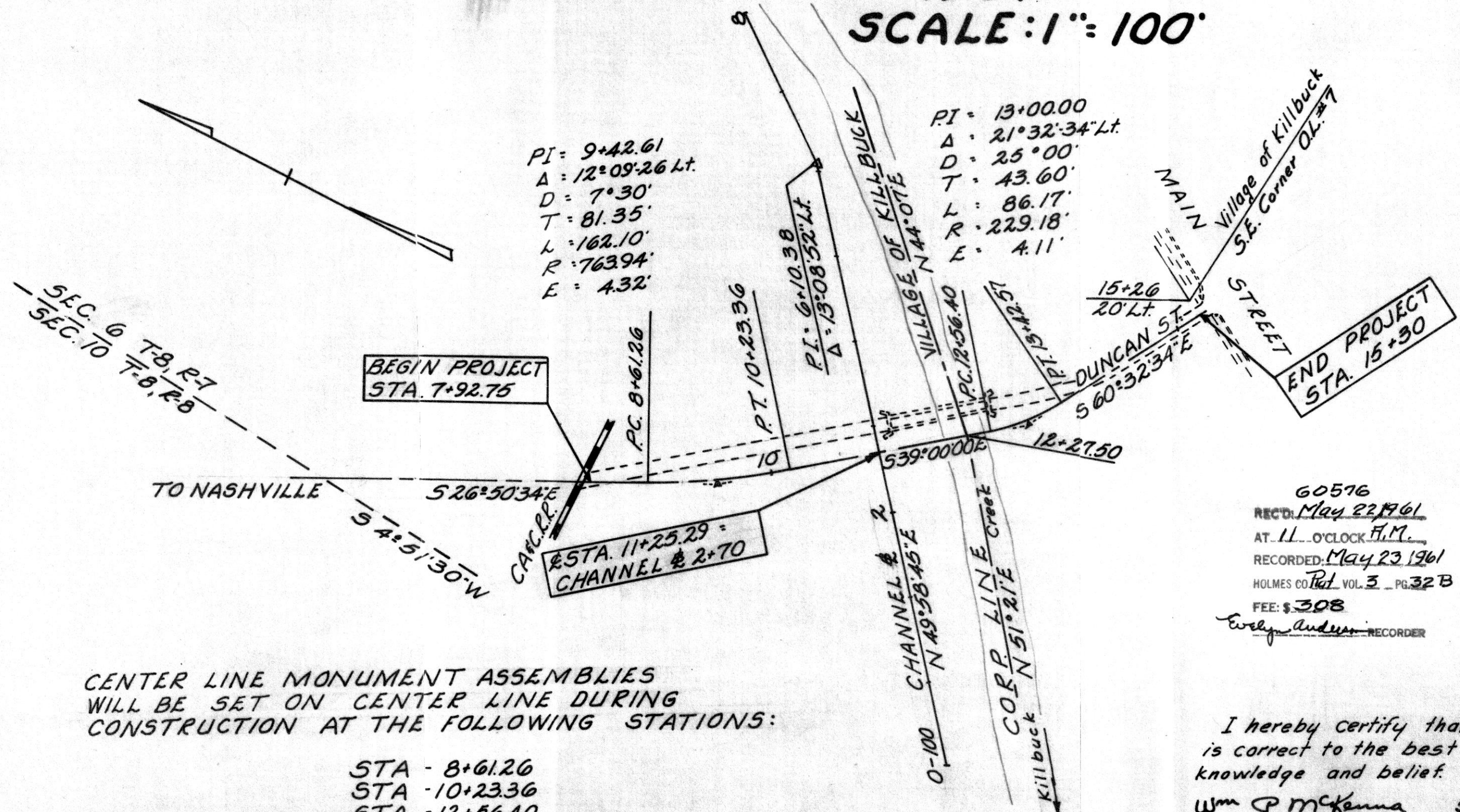


# LOCATION PLAN

## HOL-77-4.18

### 1961 SCALE: 1" = 100'



CENTER LINE MONUMENT ASSEMBLIES  
WILL BE SET ON CENTER LINE DURING  
CONSTRUCTION AT THE FOLLOWING STATIONS:

- STA - 8+61.26
- STA - 10+23.36
- STA - 12+56.40
- STA - 13+42.57
- STA - 15+00

60576  
 REC'D: May 22 1961  
 AT 11 O'CLOCK P.M.  
 RECORDED: May 23 1961  
 HOLMES CO. Plat VOL. 3 PG. 32 B  
 FEE: \$308  
 Evelyn Audum RECORDER

I hereby certify that this plat  
is correct to the best of my  
knowledge and belief.

Wm P McKenna 5-9-61  
 Division Engineer Date

