

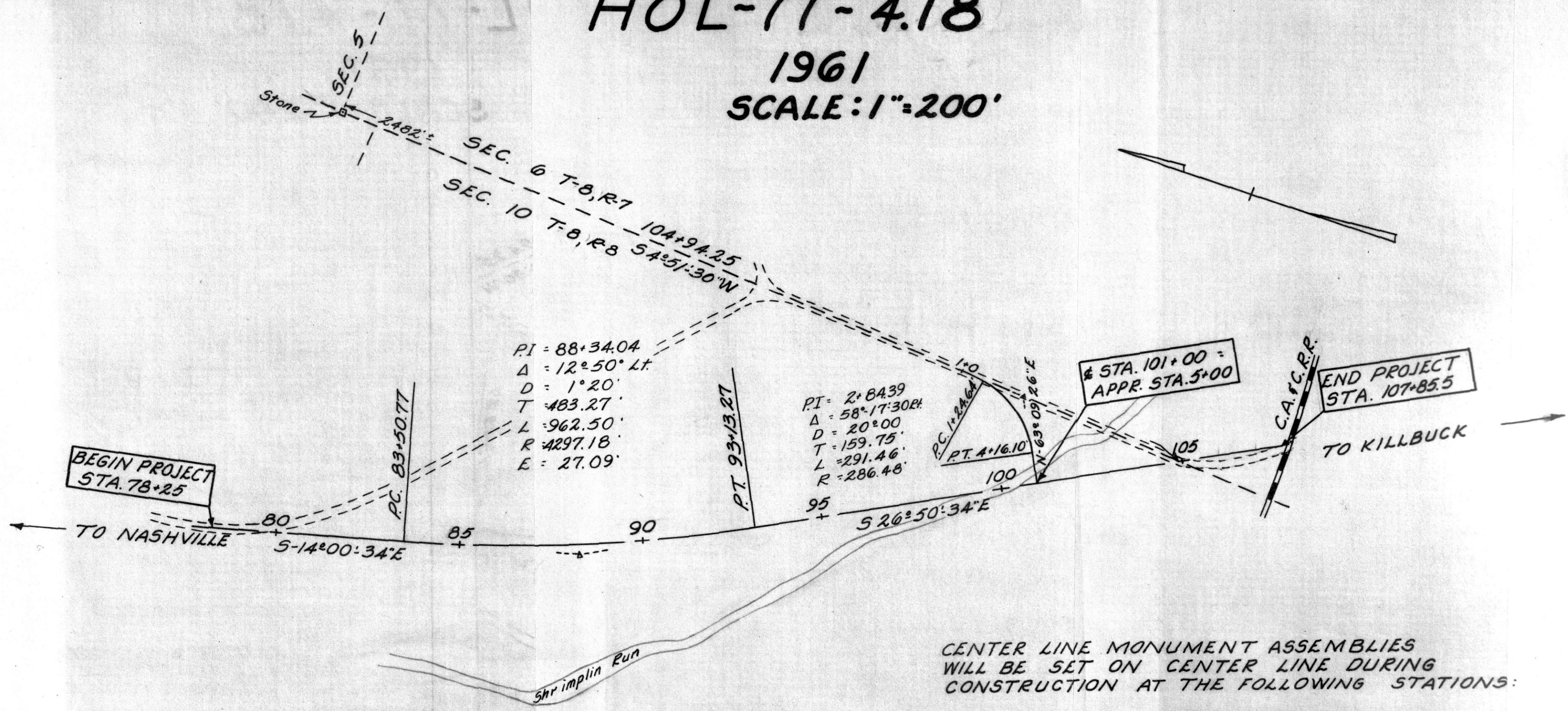
35 1/2 x 13 1/2

# LOCATION PLAN

## HOL-77-4.18

### 1961

### SCALE: 1"=200'



CENTER LINE MONUMENT ASSEMBLIES  
 WILL BE SET ON CENTER LINE DURING  
 CONSTRUCTION AT THE FOLLOWING STATIONS:

- STA. - 79+00
- STA. - 83+50.77
- STA. - 88+00
- STA. - 93+13.27
- STA. - 98+00
- STA. - 101+50
- STA. - 106+50

60575  
 RECD: May 22 1961  
 AT 11 O'CLOCK P.M.  
 RECORDED: May 23 1961  
 HOLMES & CO. VOL. 3, PG. 318  
 FEE: \$ 4.79  
Gosley Anderson RECORDER

I hereby certify that this plat  
 is correct to the best of my  
 knowledge and belief.  
Wm P McKenna 5-9-61  
 Division Engineer Date

