

60356

REC'D: April 8-1961

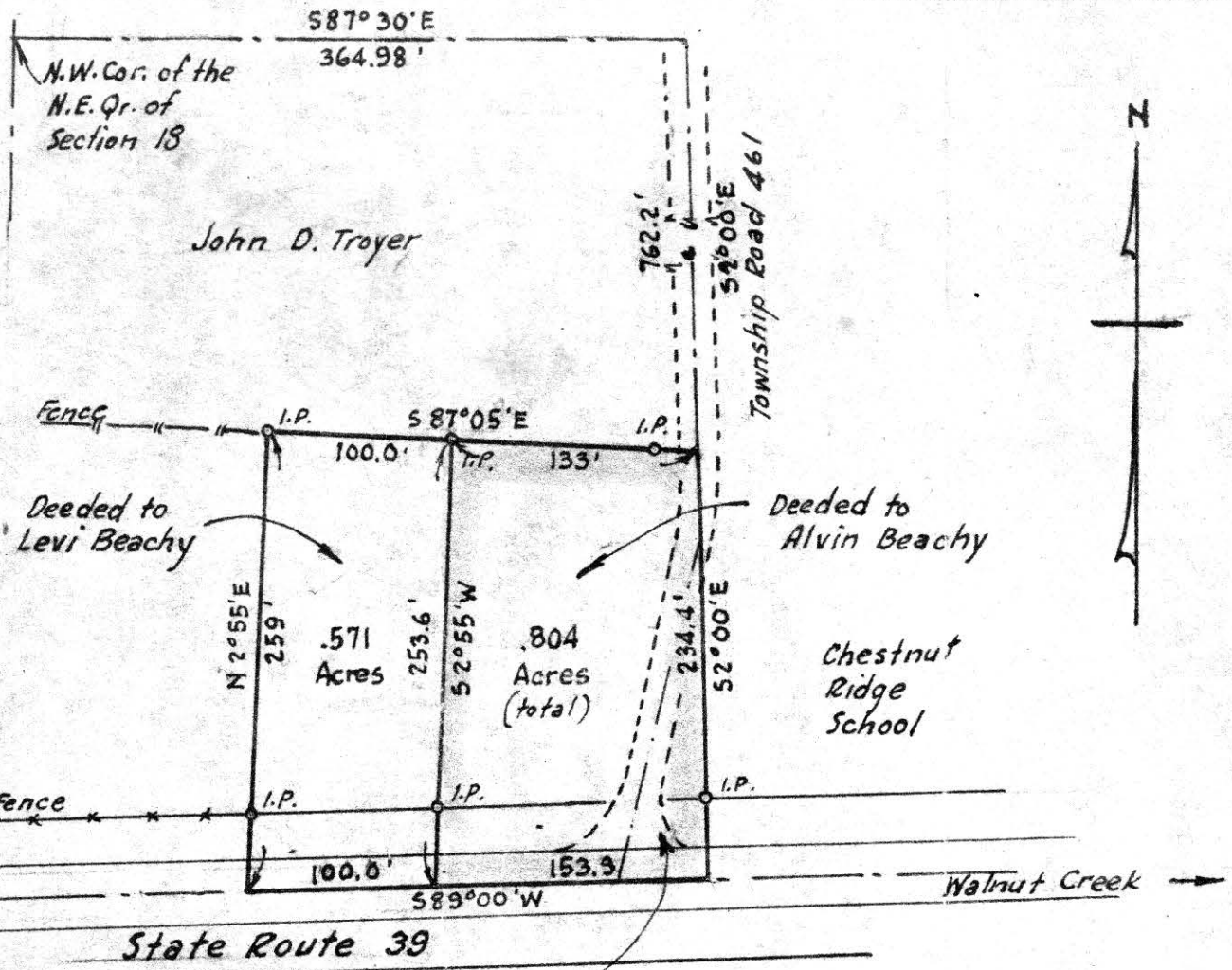
AT 8:57 O'CLOCK AM

RECORDED: Apr 10-1961

HOLMES CO. Vol VOL. 3 PG. 26B

FEE: \$ 1.00

Ervin Anderson RECORDER



Note:  
 .212 Acres on the  
 east side of  
 Township Road 461

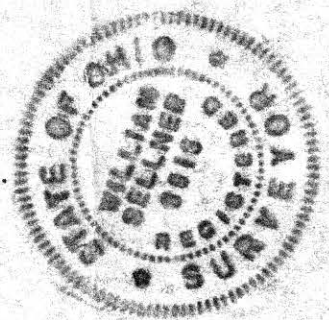
MAP  
 SHOWING LOCATION  
 OF TWO PARCELS OF LAND  
 ON THE  
 JOHN D. TROYER FARM

IN  
 Section 18, Township 9, Range 5  
 Walnut Creek Township, Holmes County  
 Ohio

Scale 1" = 100 ft. Nov. 1960

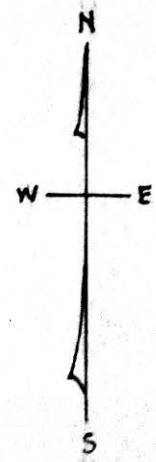
Drawn from a  
 survey by

William Sellner  
 Reg. Sur. No. 3915

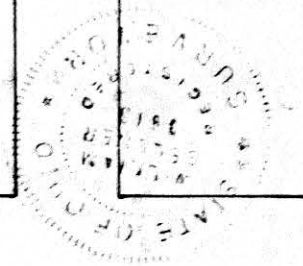
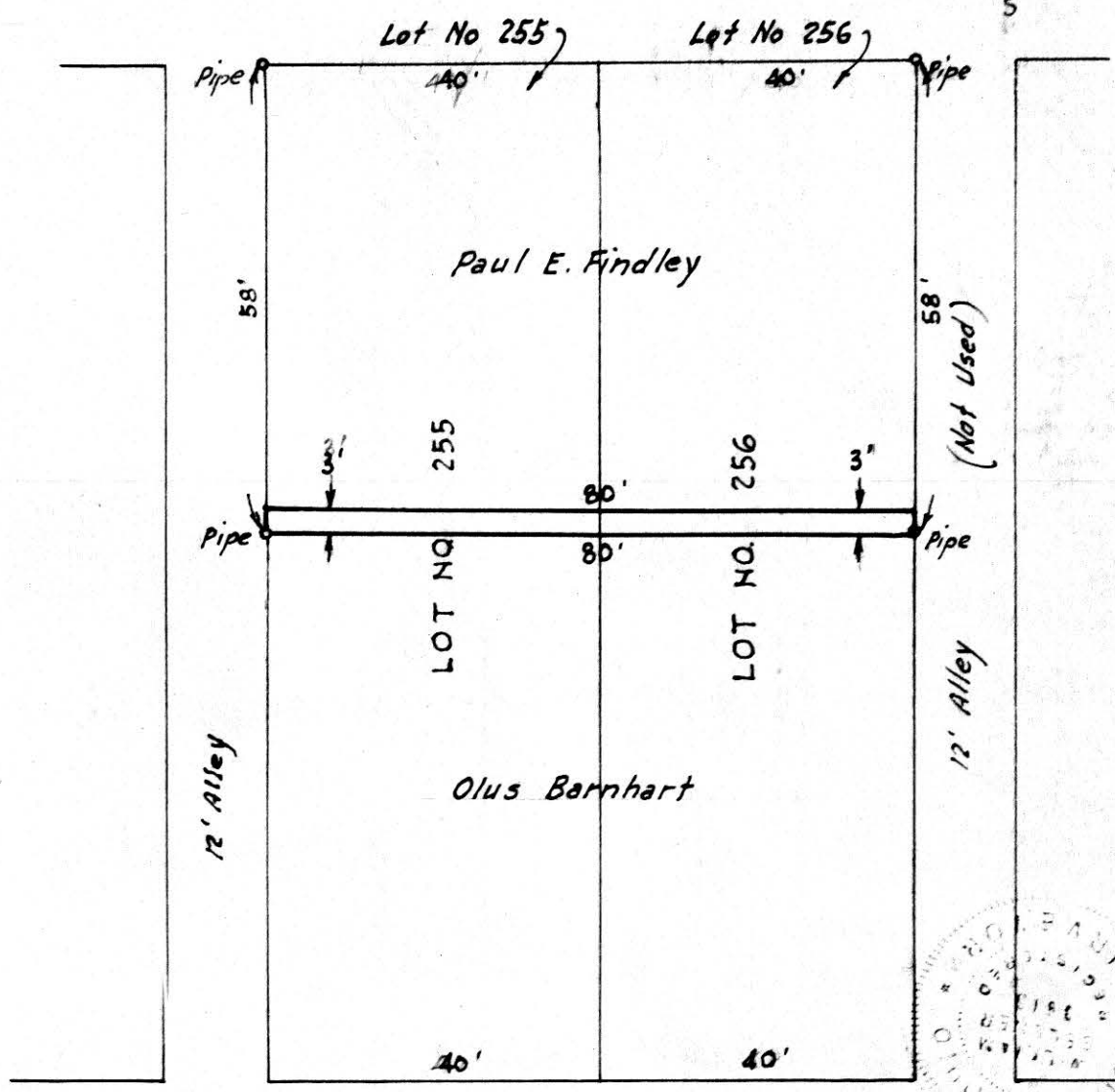


MAP  
SHOWING LOCATION  
OF A STRIP OF LAND  
DEEDED BY  
PAUL E. FINDLEY  
TO  
OLUS BARNHART  
IN THE  
Village of Millersburg  
Ohio

Scale 1" = 20 ft  
Jan. 1961



Perkins Street 49 1/2 ft. wide



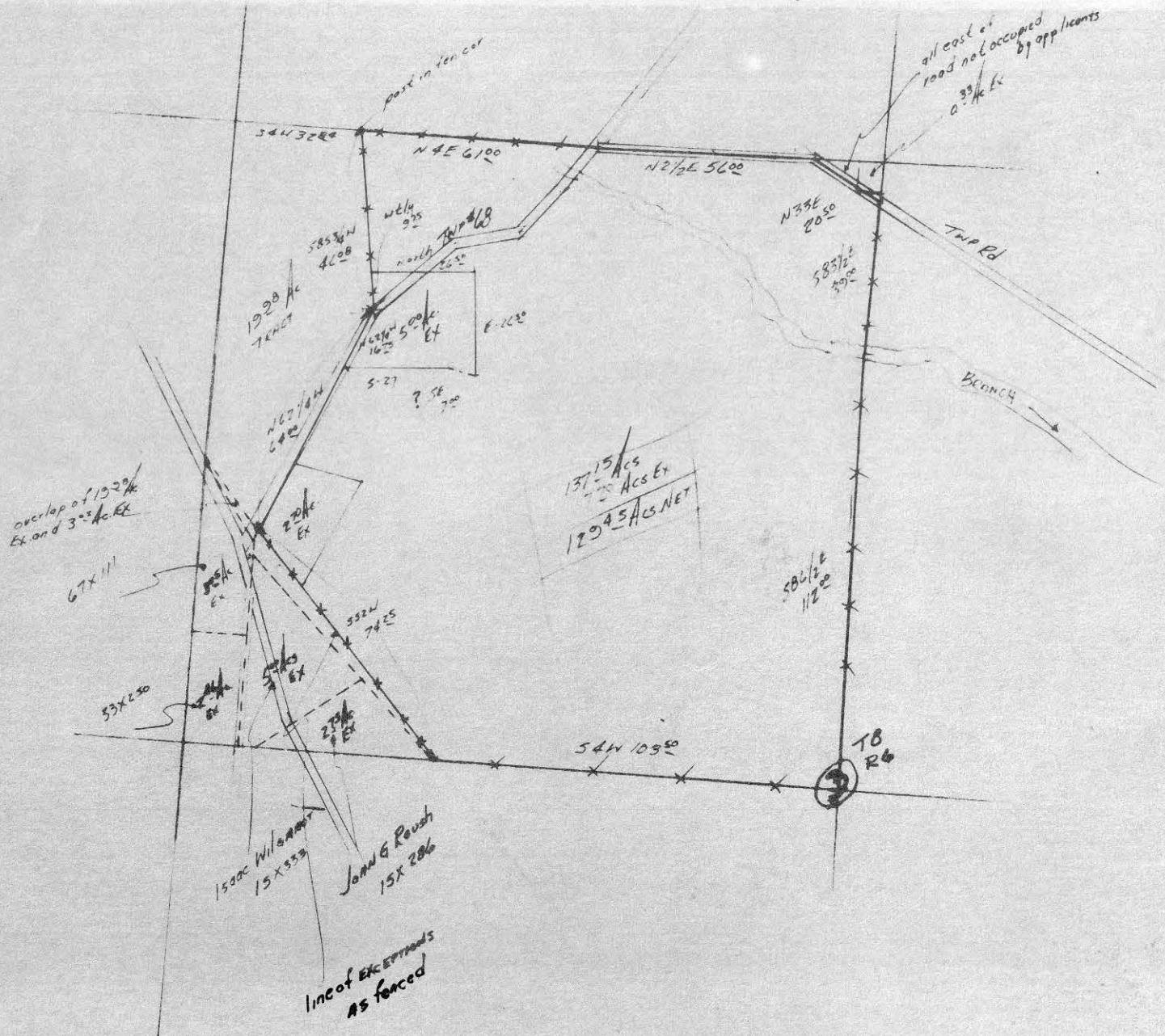
Drawn by William Selmer  
Reg. Sur. No. 3915

60375

REC'D: April 11-1961  
AT 1:50 CLOCK A.M.  
RECORDED: April 13, 1961  
HOLMES CO. Vol 3 PG. 26-8

FEE: \$ 1.00  
Archie Anderson RECORDER

8 1/2" x 13"



MECHANIC TOWNSHIP  
 HOLMES COUNTY, OHIO  
 AP# CIV-2V-52  
 PAGE #

60387

REC'D: April 13-1961

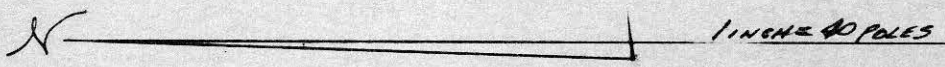
AT 3:10 O'CLOCK P.M.

RECORDED: April 14-1961

HOLMES CO. Plat. VOL. 3 PG. 26B

FEE: \$-1.11

C Evelyn Anderson RECORDER



354418 - OHIO  
 3/29/61 - G. J. VOWELS