

60140

REC'D: *February 27-1961*

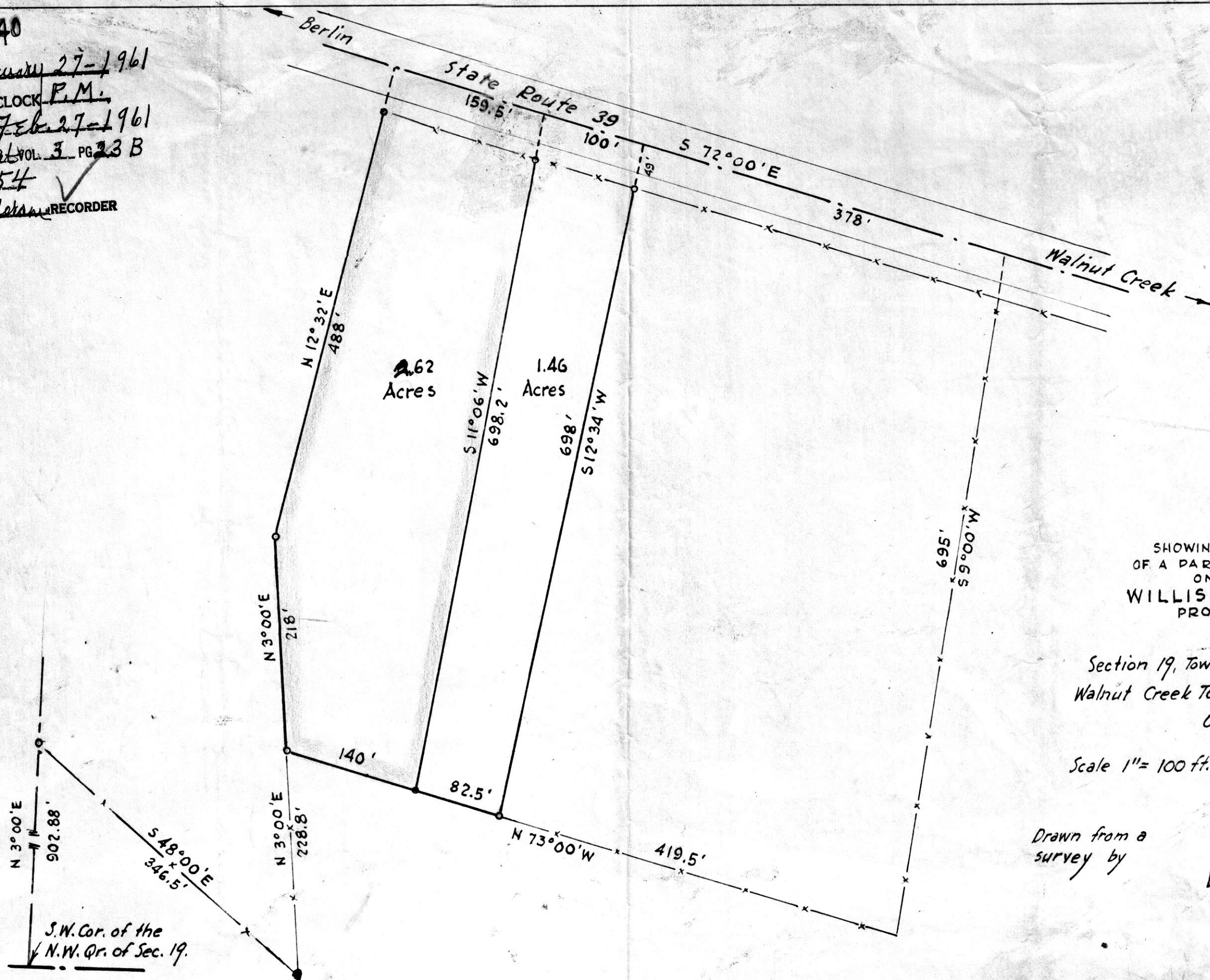
AT 2:35 O'CLOCK P.M.

RECORDED: *Feb 27-1961*

HOLMES CO. VOL. 3 PG. 23 B

FEE: \$1.54

Evsey Anderson RECORDER



MAP
SHOWING LOCATION
OF A PARCEL OF LAND
ON THE
WILLIS COBLENTZ
PROPERTY

IN
Section 19, Township 9, Range 5
Walnut Creek Township, Holmes County
Ohio

Scale 1" = 100 ft.

Feb. 1961

Drawn from a
survey by

William Sellner
Reg. Sur. No. 3915

S.W. Cor. of the
N.W. Qr. of Sec. 19.