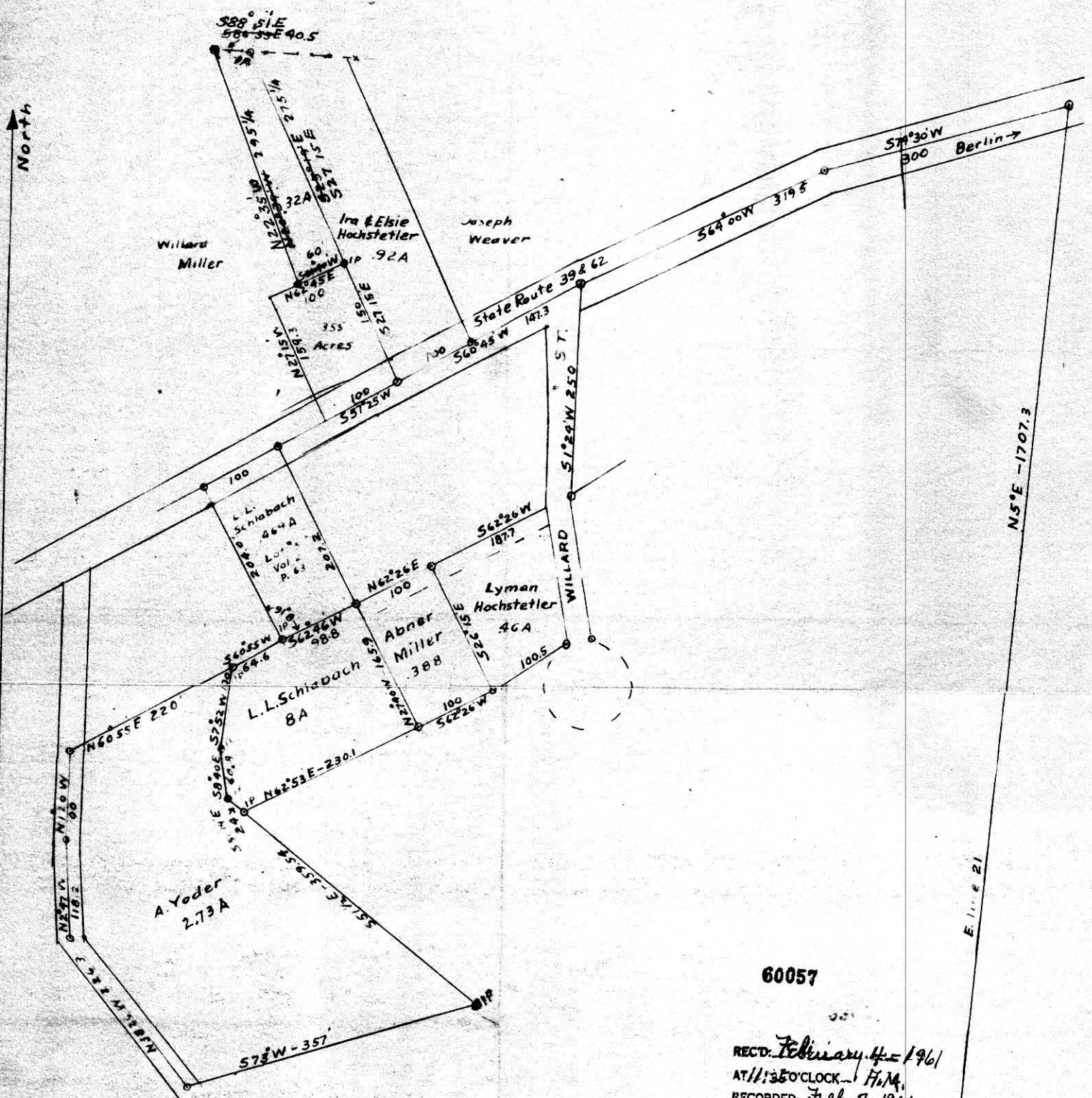


FOR WILLARD MILLER
OHIO, HOLMES COUNTY,
T9N. R6W, 1ST QTR, BERLIN,
CONNECTICUT WESTERN RESERVE SCHOOL LANDS
LOT 21

SCALE 1" = 100 FEET.

AUGUST 12, 1960.



60057

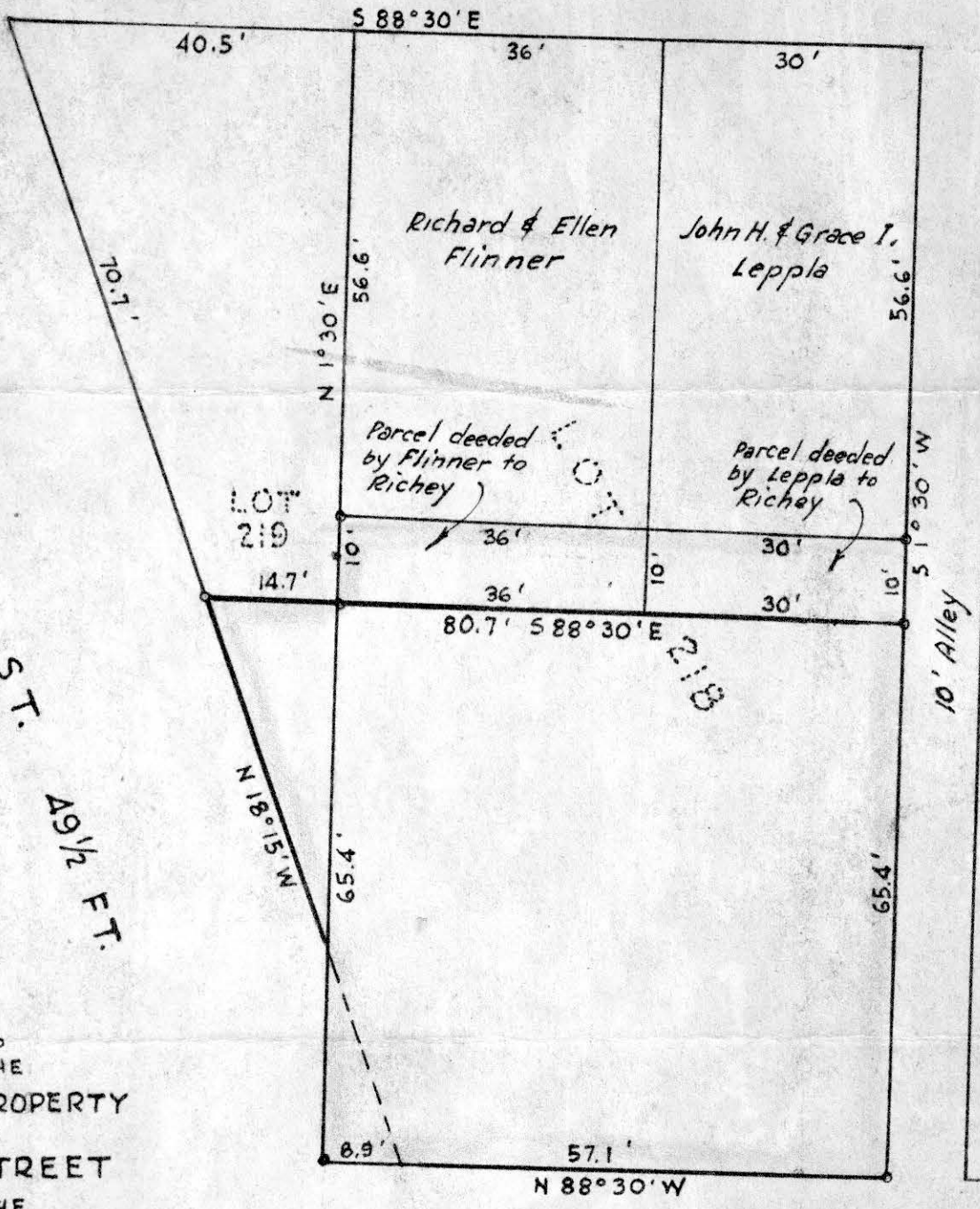
REC'D: February 4, 1961
 AT 11:35 O'CLOCK - H.M.
 RECORDED: Feb. 7, 1961
 HOLMES CO Plat VOL 3 - PG. 22-B
 FEE: \$3.44
 Evelyn A. Lewis, RECORDER



Rolland L. Maus

Southeast Corner

JACKSON ST. 66 FT.



GRANT ST. 49 1/2 FT.



MAP OF THE RICHEY PROPERTY ON GRANT STREET IN THE Village of Millersburg Hardy Township, Holmes County Ohio

Scale 1" = 20 ft.

Mar. 1961

Drawn from a survey by William Sellner Reg. Sur. No. 3915

60213

REC'D: March 14 - 1961
AT 2:25 O'CLOCK P.M.
RECORDED: March 14 - 1961
HOLMES CO. VOL. 3 PG. 22B
FEE: \$1.00

Evelyn Anderson RECORDER