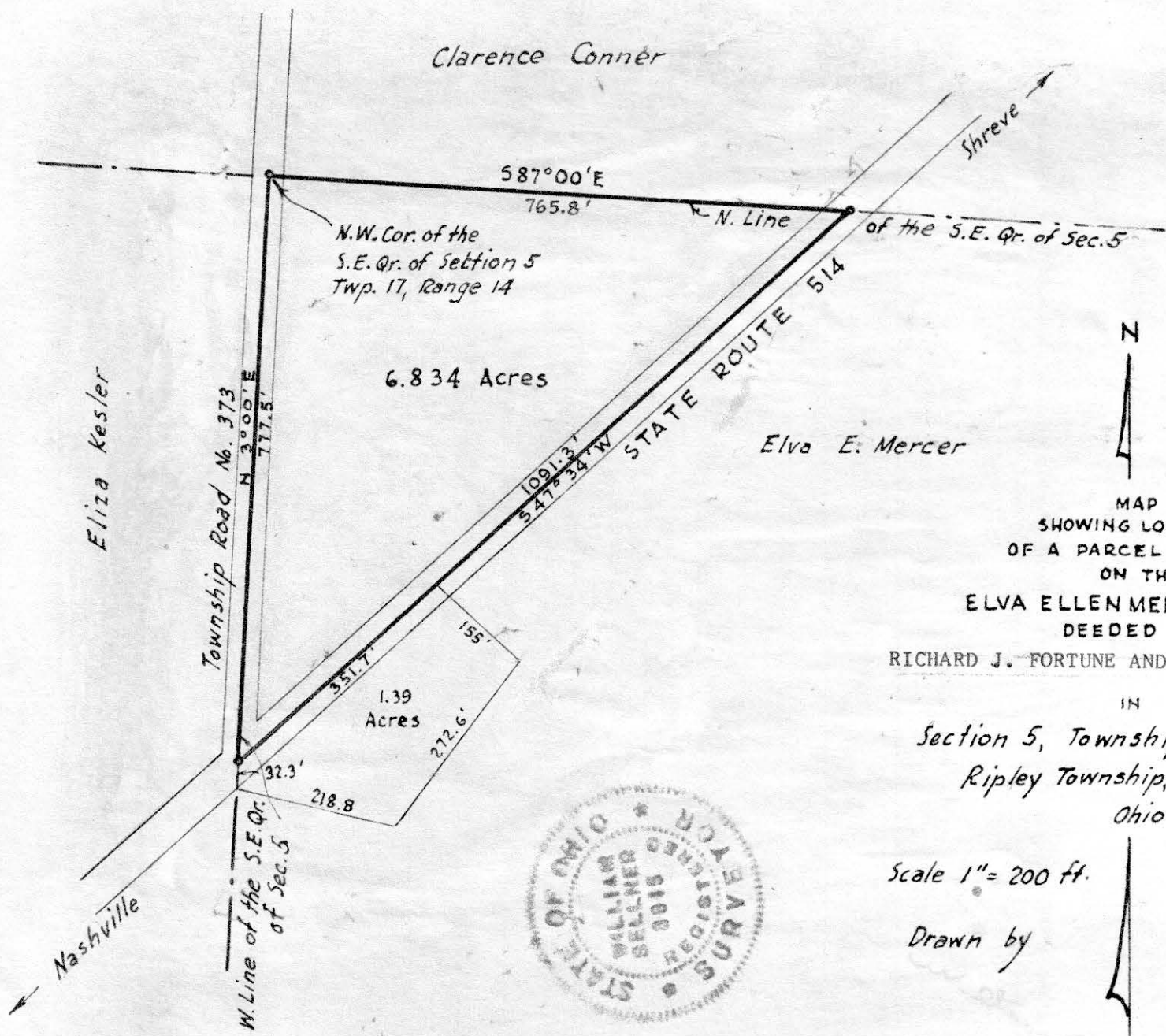
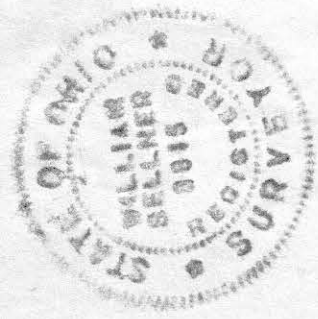


59962

REC'D: January 7-1961  
AT 11:55 O'CLOCK H.M.  
RECORDED: Jan-9-1961  
HOLMES CO. Plat VOL. 3 PG. 20 B  
FEE: \$ 1.00  
Erly Anderson RECORDER



MAP  
SHOWING LOCATION  
OF A PARCEL OF LAND  
ON THE  
ELVA ELLEN MERCER FARM  
DEEDED TO  
RICHARD J. FORTUNE AND MARJORIE A. FORTUNE  
IN  
Section 5, Township 17, Range 14  
Ripley Township, Holmes County  
Ohio



Scale 1" = 200 ft.

Drawn by

Jan. 1961

William Sellner  
Reg. Sur. No. 3915

59976

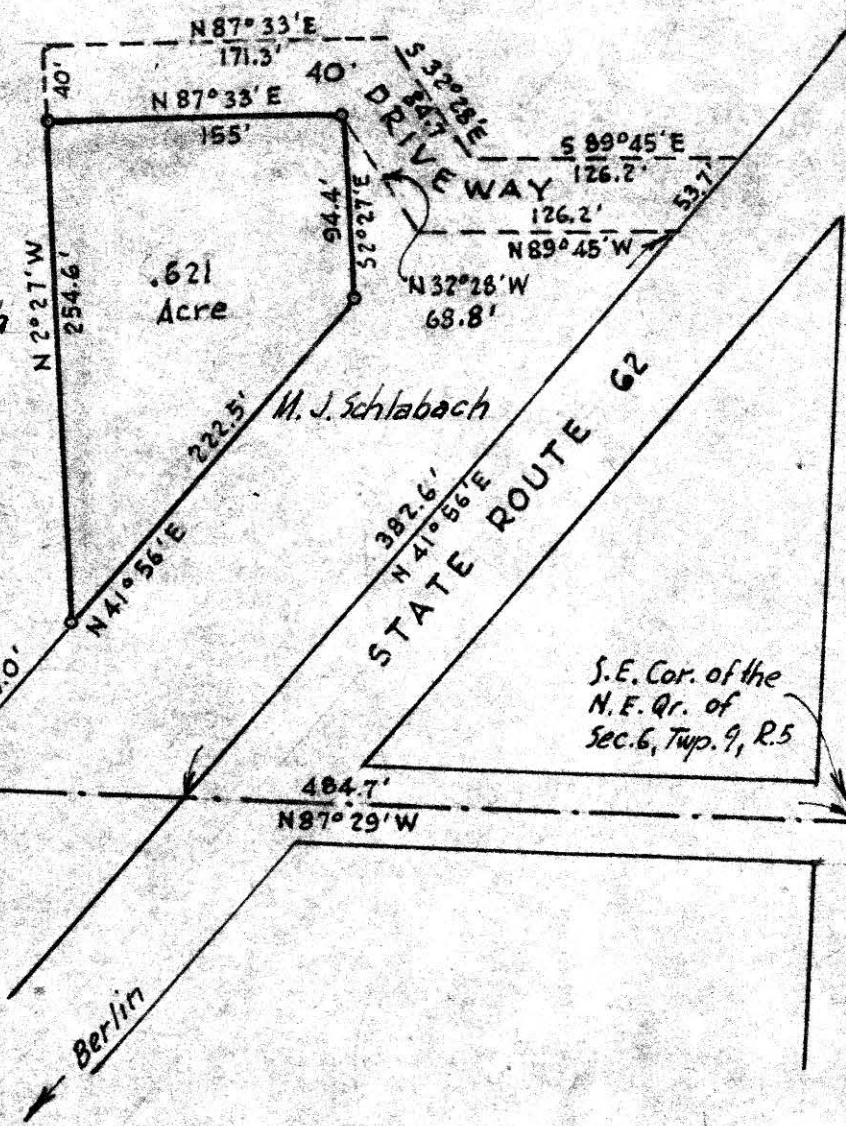
M.J. Schlabach

M.J. Schlabach

.621 Acre

M.J. Schlabach

S.E. Cor. of the N.E. Qr. of Sec. 6, Twp. 9, R. 5



REC'D: January 12-1961

AT 3:25 O'CLOCK P.M.

RECORDED: Jan. 13-1961

HOLMES CO. Plot VOL. 3 PG 20B

FEE: \$ 1.00

Evelyn Anderson RECORDER

DEED VOL. 144 PAGE 477 MAP

OF  
A PARCEL OF LAND  
DEEDED BY  
M.J. SCHLABACH  
TO

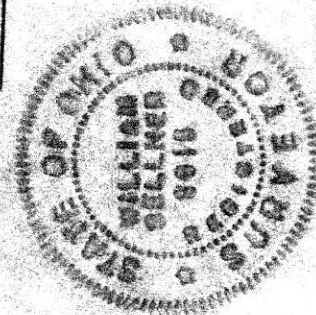
IN  
Section 6, Township 9, Range 5  
Berlin Township, Holmes County  
Ohio

Scale 1" = 100 ft.

Drawn by

Dec. 1960

William Sellner  
Reg. Sur. No. 3915



59966

Willard Miller

Ira & Elsie Hochstetler

Joseph Weaver

RECD: January 9-1961

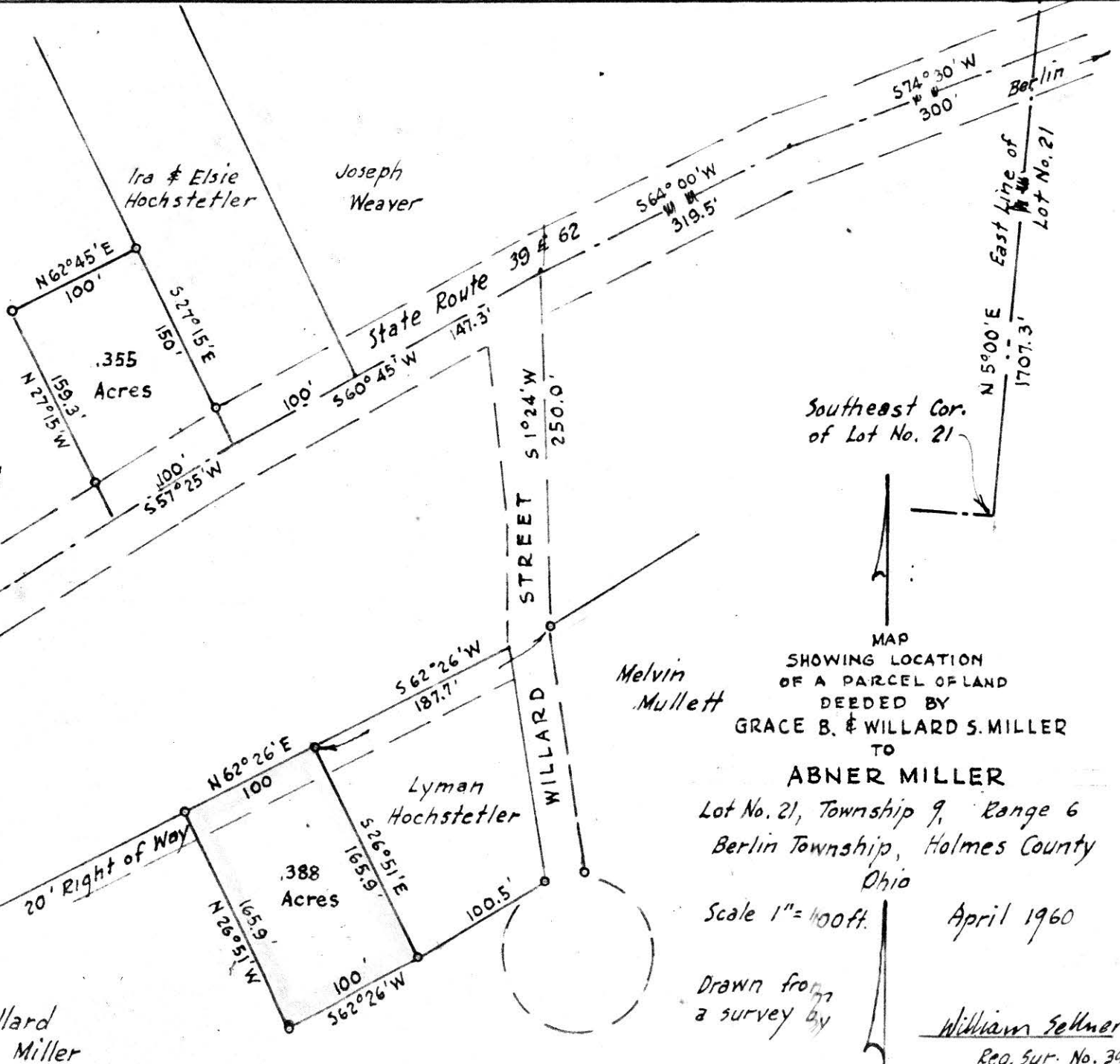
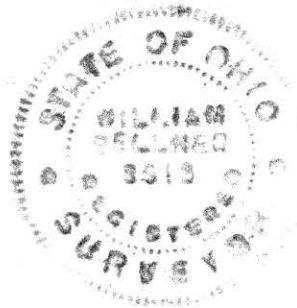
AT 10:30 O'CLOCK A.M.

RECORDED: Jan 9-1961

HOLMES CO. Plat VOL. 3 PG. 20 B

FEE \$ 1.00

Erwin Anderson RECORDER



MAP  
SHOWING LOCATION  
OF A PARCEL OF LAND  
DEEDED BY  
GRACE B. & WILLARD S. MILLER  
TO  
ABNER MILLER

Lot No. 21, Township 9, Range 6  
Berlin Township, Holmes County  
Ohio

Scale 1" = 100 ft.

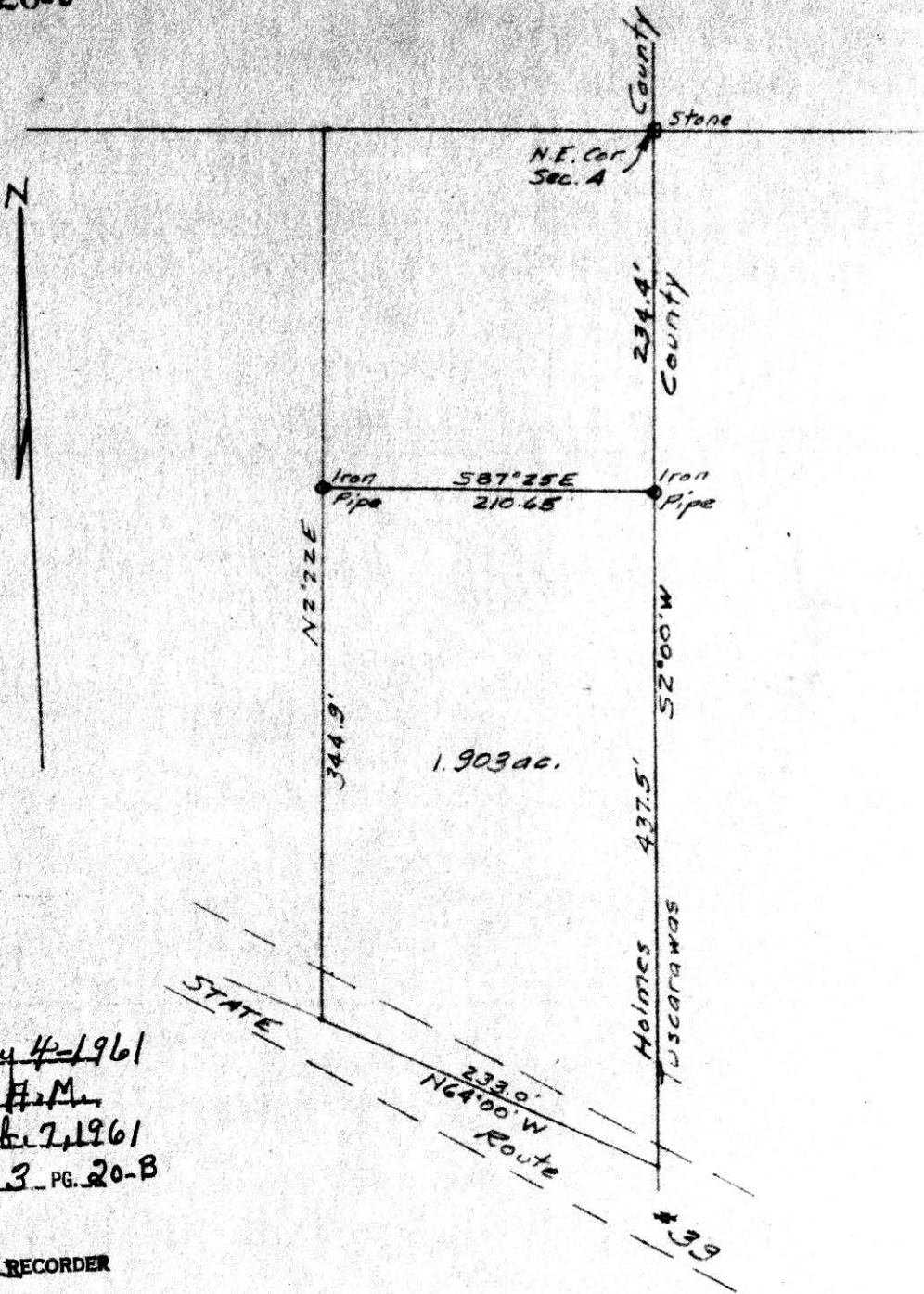
April 1960

Drawn from  
a survey by

William Sellner  
Reg. Sur. No. 3915



8 x 11



60055

REC'D: February 4-1961

AT 10:15 O'CLOCK P.M.

RECORDED: Feb 7, 1961

HOLMES CO. VOL 3 PG. 20-B

FEE: \$1.19

*C. E. Anderson* RECORDER

Plat of survey made for Ray Miller. Located in the northeast quarter of Section 4 in Township 8, Range 4 in Walnutcreek Township, Holmes County.

Scale: 1 in. = 100 ft.

Surveyed December 3, 1960

*D. F. Miskimen*  
 D. F. Miskimen  
 Reg. Surveyor