

N.E. Cor. of the
N.W. Qr. of
Section 16

59900

RECT: Dec. 20, 1960
 AT 10:20 O'CLOCK A.M.
 RECORDED: Dec. 22-1960
 HOLMES CO. PLAT VOL. 3 PG. 19-B
 FEE: \$1.00
 Evelyn Anderson, RECORDER
 l.a.

6.0 Acres

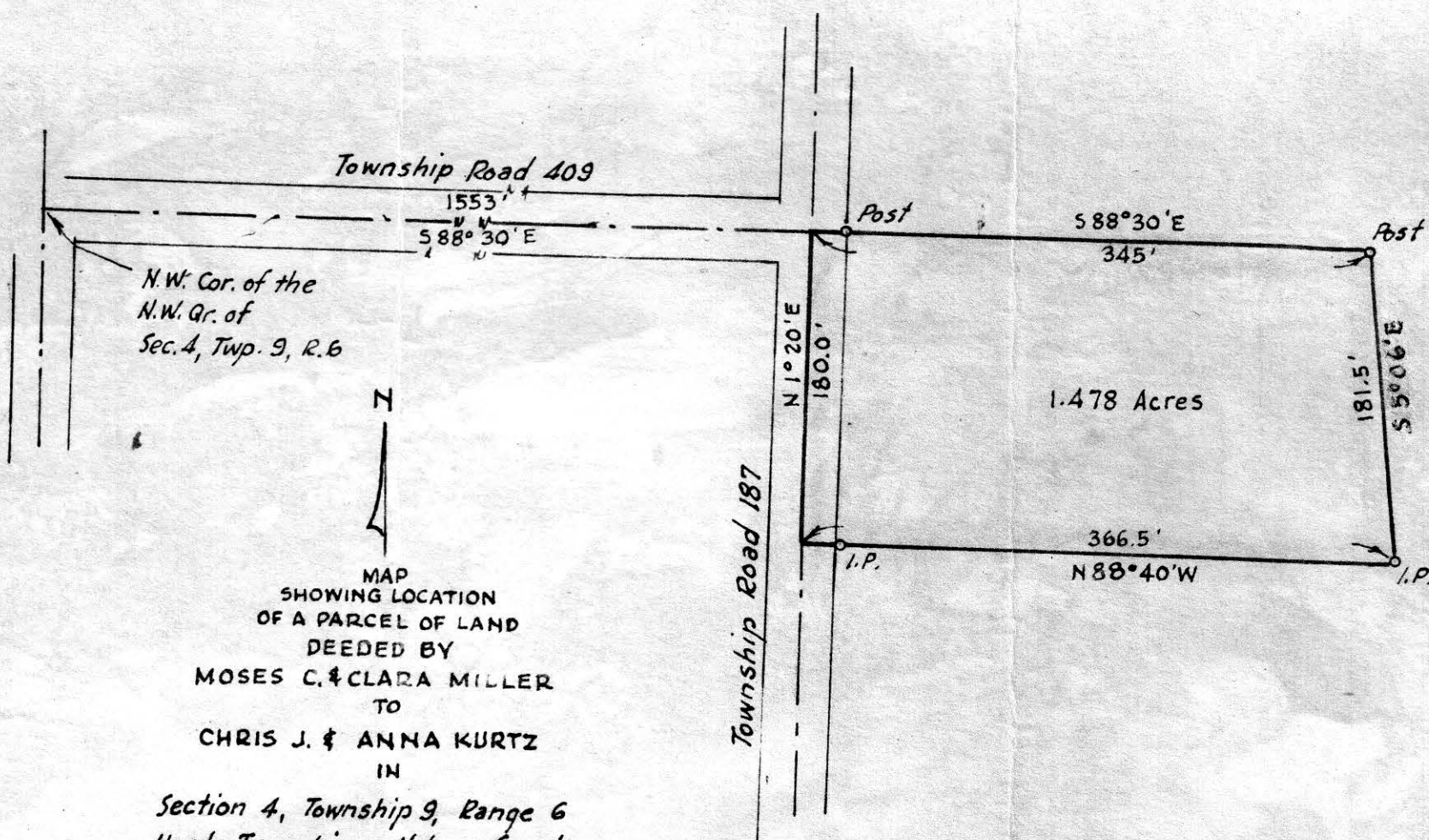


MAP
 SHOWING LOCATION
 OF A PARCEL OF LAND
 DEEDED, BY
 LEVI L. & EMMA KUHNS
 TO
 HAROLD BUTTERFIELD
 Section 16, Township 17, Range 14
 Ripley Township, Holmes County
 Ohio

Scale 1" = 100 ft Nov. 1960

Drawn from a
 survey by

William Zeltner
 Reg. Sur. No. 3915



MAP
SHOWING LOCATION
OF A PARCEL OF LAND
DEEDED BY
MOSES C. & CLARA MILLER
TO
CHRIS J. & ANNA KURTZ
IN

Section 4, Township 9, Range 6
Hardy Township, Holmes County
Ohio

59938 Drawn from
a survey by

William Sellner
Reg. Sur. No. 3915

REC'D: *December 31, 1960*

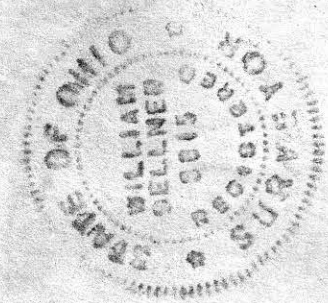
AT *10:20* O'CLOCK *A.M.*

RECORDED: *December 31, 1960*

HOLMES CO. *Flat* VOL. *3* PG. *118*

FEE: \$ *1.00*

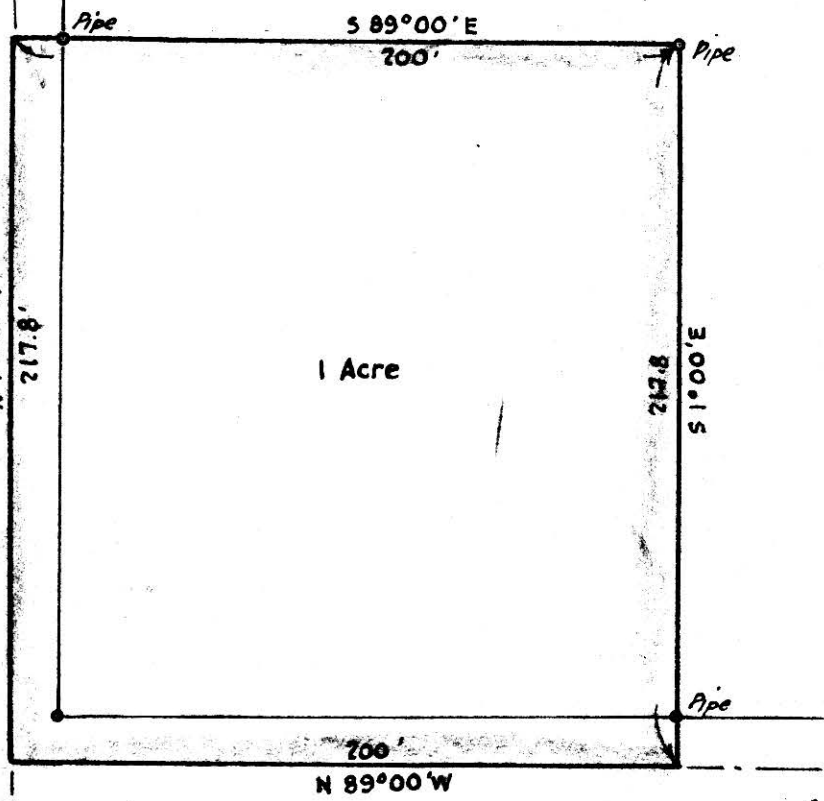
Evelyn Anderson RECORDER
a.s.



59945 ✓

Harry Wigton

REC'D: January 5, 1961
AT 10:00 O'CLOCK A.M.
RECORDED: January 6, 1961
HOLMES CO. Plat VOL. 3 PG. 19-B
FEE: \$ 1.00
Erskine Anderson RECORDER
A.S.



Harry Wigton



MAP
SHOWING LOCATION
OF A PARCEL OF LAND
DEEDED BY
HARRY WIGTON
TO
FRED WAGNER
IN

State Route 179

Holmes County Road 100 Lakeville →

Section 26, Township 20, Range 15
Washington Township, Holmes County
Ohio

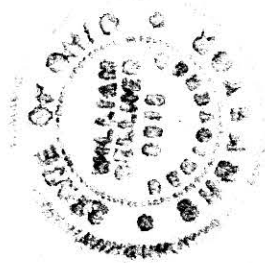
N 1°00' W
564.4'

S.W. Cor. of the
S.E. Qr. of
Section 26

Township Road 273

Scale 1" = 50 ft.

Dec. 1960



Drawn from a
survey by

William Soller
Reg. Sur. No. 3915