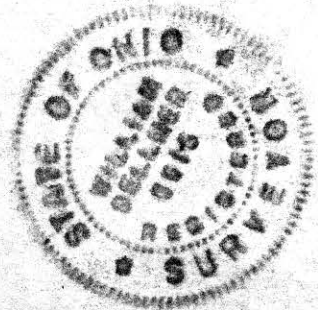


59840

Ernest Cline

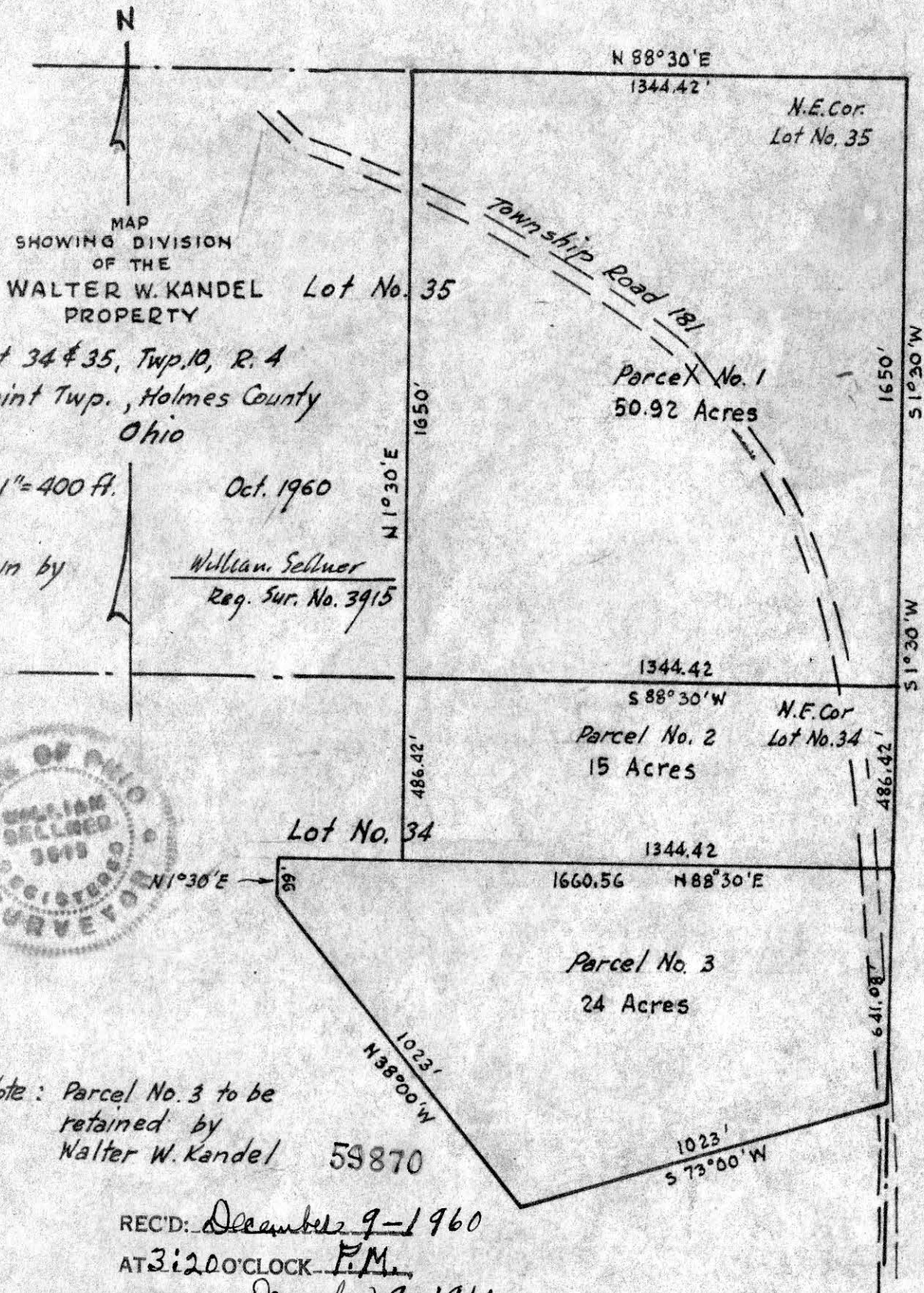
REC'D: December 3-1960  
 AT 9:45 O'CLOCK H.M.  
 RECORDED December 3-1960  
 HOLMESCO VOL 3 PG 18B  
 FEE: \$ 1.00

Evelyn Anderson RECORDER



Drawn from a survey by

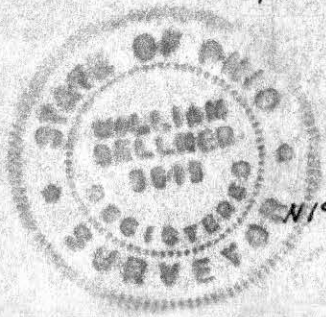
William Sellner  
 Reg. Sur. No. 3915



Scale 1" = 400 ft.

Oct. 1960

Drawn by William Sellner  
Reg. Sur. No. 3915



Note: Parcel No. 3 to be retained by Walter W. Kandel 59870

REC'D: December 9-1960  
AT 3:20 O'CLOCK P.M.  
RECORDED: December 9-1960.  
HOLMES CO. Plot VOL. 3 PG. 18 B.  
FEE: \$ 1.00  
C Evelyn Anderson RECORDER



59846

HARDY TOWNSHIP  
SE QUARTER SECTION 14  
TWP 9 RANGE 6  
HOLMES COUNTY, O.

VOL 3 PAGE 18-B  
made for  
Mr Leo Mast  
and  
Mr Alvin Gingerich

REC'D: December 3-1960

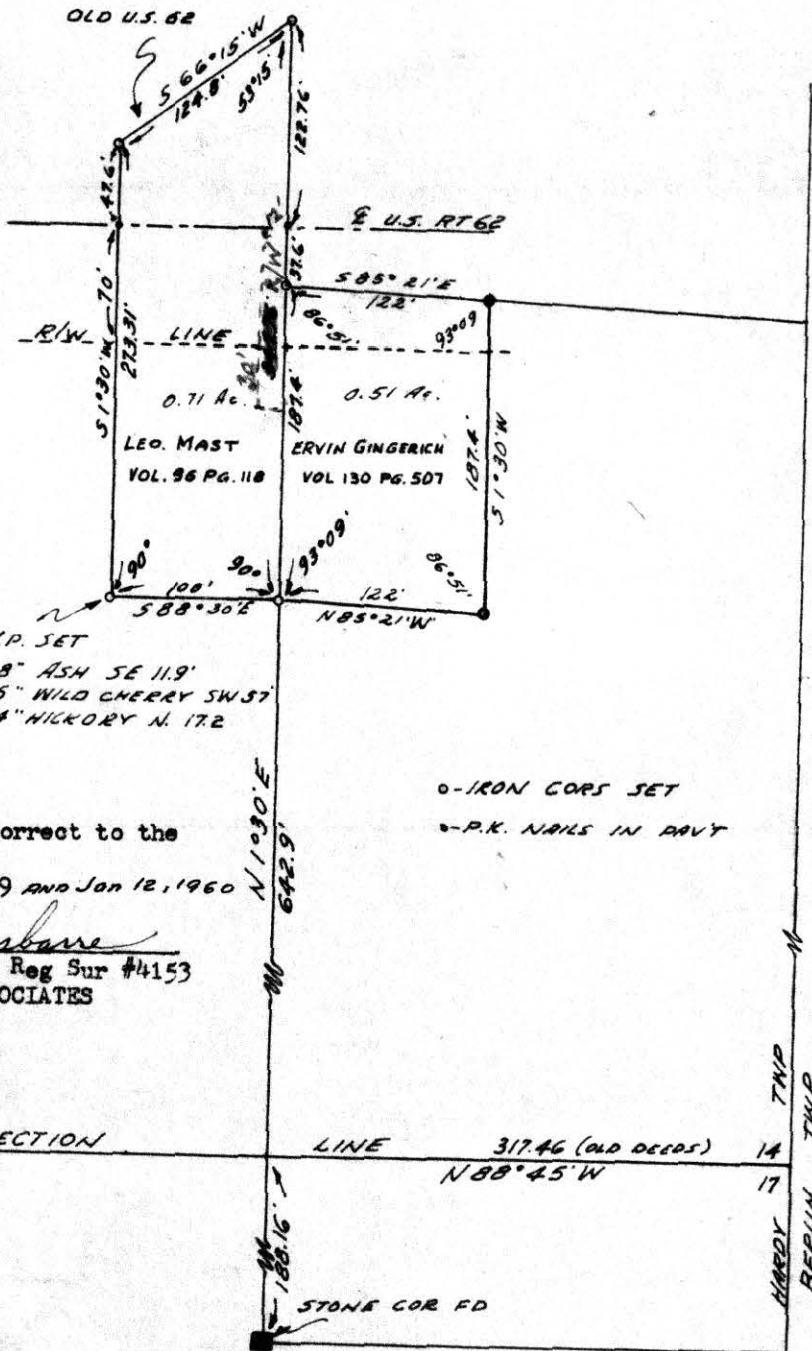
AT 10:45 CLOCK A.M.

RECORDED: December 5-1960

HOLMES COUNTY VOL. 3 PG. 18B

SEE: \$1.00

*Early Anderson* RECORDER

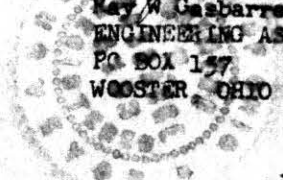


I.P. SET  
18" ASH SE 11.9'  
16" WILD CHERRY SW 57'  
14" HICKORY N. 17.2'

o-IRON CORNS SET  
•-P.K. NAILS IN DAVT

I certify this survey to be correct to the best of my knowledge.  
Completed November 23rd, 1959 and Jan 12, 1960

*Ray H. Gasbarre*  
Ray H. Gasbarre Reg Sur #4153  
ENGINEERING ASSOCIATES  
PO BOX 157  
WOOSTER OHIO



SECTION LINE 317.46 (old deeds) 14  
N 88° 45' W 17

STONE COR FD

HARDY TWP  
BERLIN TWP