

Iron Pipe

R. J. & Lovella Patterson

565° 27' E  
411.8'

.769 Acres

South Line of Lot 32  
North Line of Lot 37

Iron Pipe

Owen F. Patterson  
59836

REC'D: December 2-1960

AT 3:40 O'CLOCK P.M.

RECORDED: December 2-1960

HOLMES CO. Plat No. 3 PG. 17 B

FEES: \$1.00

*Evelyn Anderson* RECORDER

N 12° 05' W  
176.07'

293.93'

1.809 Acres

Total 2.578 Acres

S 80° 33' E  
201.0'

Iron Pipe

312.1'  
S 77° 37' W

Iron Pipe

N 55° 05' E  
323.0'

R. J. & Lovella Patterson



MAP  
SHOWING LOCATION  
OF A PARCEL OF LAND  
DEEDED BY  
R. J. & LOVELLA PATTERSON  
TO

IN  
Lots 32 & 37, 1st Qr. Twp., Twp. 9, Range 7  
Hardy Township, Holmes County  
Ohio

Scale 1" = 100 ft.

Oct. 1960

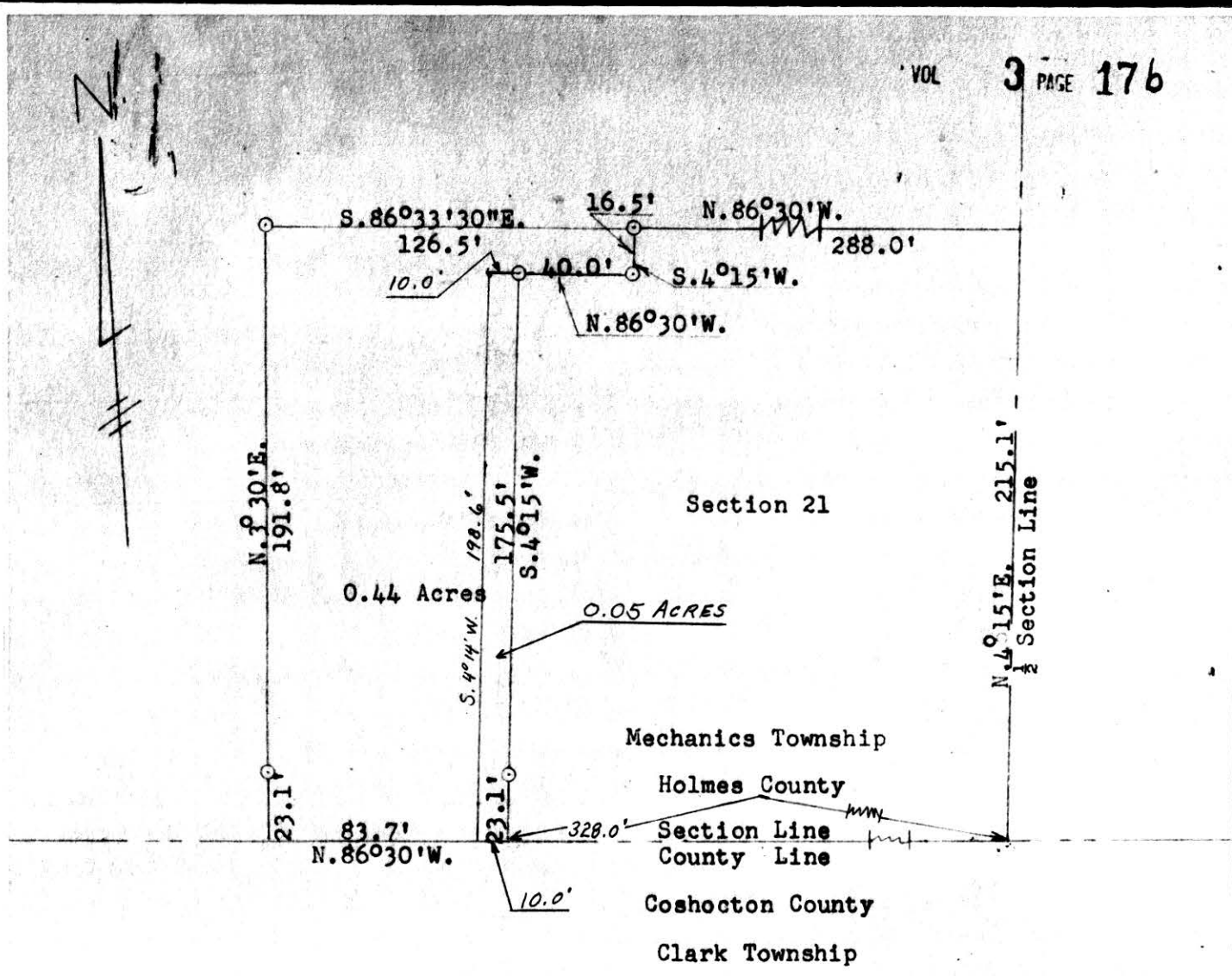
Drawn from a  
survey by

*William Sellner*  
Reg. Sur. No. 3915

1147'  
N 86° 00' W

S.E. Cor. of  
Lot No. 37





○ = IRON PIPE

PLAT OF SURVEY  
 OF PART OF  
 THIRD QUARTER OF SECTION 21;  
 TOWNSHIP 8; RANGE 7;  
 MECHANICS TOWNSHIP; HOLMES COUNTY;  
 STATE OF OHIO

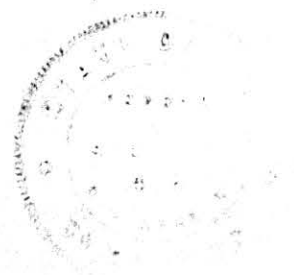
59855

MARCH 1958

SCALE: 1" = 50'

REC'D: *December 6 - 1960*  
 AT 10:35 O'CLOCK *H. M.*  
 RECORDED: *December 9, 1960.*  
 HOLMES CO. *Plat* VOL. *3* PG. *17-B*  
 FEE: \$ *1.00*

*Edgar Anderson* RECORDER



G. A. STEWART, REG. SURVEYOR

Iron Pin

Beatrice P. Snyder

S 87° 00' E  
775.0'

Post

N 87° 00' W  
697.6'

N.E. Cor. of  
Lot No. 32

R.J. & Lovella  
Patterson

6.306 Acres

Woods

R.J. & Lovella  
Patterson



MAP

SHOWING LOCATION  
OF A PARCEL OF LAND  
DEEDED BY  
R. J. & LOVELLA PATTERSON  
TO

IN

Lot No. 32, 1<sup>st</sup> Qr. Twp., Twp. 9, Range 4  
Hardy Township, Holmes County  
Ohio

R.J. & Lovella  
Patterson

767.3'  
N 43° 55' W

Iron Pipe

268.5'  
N 75° 35' W  
59835

563.0'  
S 4° 14' E

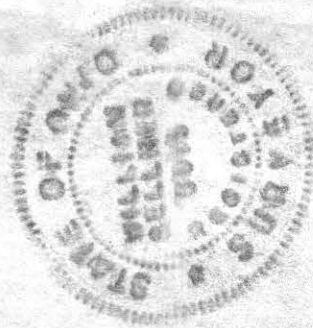
Iron Pipe

Scale 1" = 100 ft.

Oct. 1960

Drawn from a  
survey by

William Sellmer  
Reg. Sur. No. 3915



REC'D: December 2-1960.

AT 3:40 O'CLOCK P.M.

RECORDED: December 2-1960

HOLMES CO. Vol. 3 PG 17B

FEE: \$ 1.00

W. Anderson RECORDER