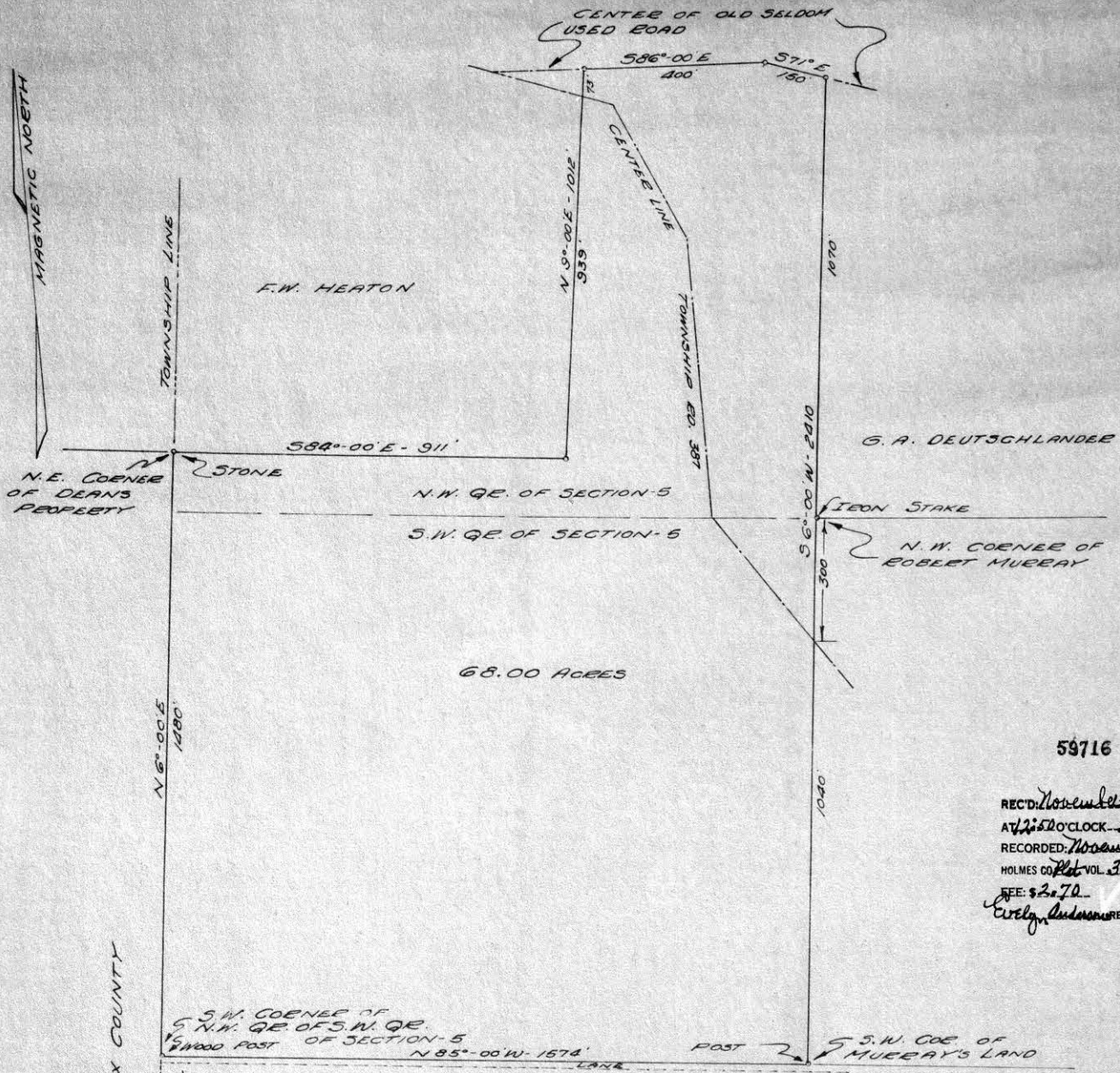


15" x 18"



59716

REC'D: November 7-1960
 AT 2:50 O'CLOCK P.M.
 RECORDED: November 7-1960
 HOLMES CO. Plat VOL. 3, PG. 148
 FEE: \$2.70
 Evelyn Anderson RECORDER

KNOX COUNTY

HOLMES COUNTY

DE. DEAN PROPERTY

PART OF N.W. & S.W. QRS.
 OF SECTION NO 5, T-8, R-9
 RICHLAND TWP. HOLMES CO.
 SCALE: 1" = 200 FT.

I CERTIFY THIS PLAT TO BE A COPY
 OF SURVEY MADE BY ME AT THE
 REQUEST OF FRANK HEATON.

Floyd W. Barnes Nov. 3, 1960

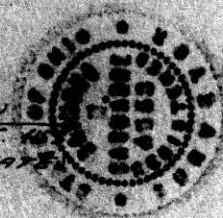


PRAIRIE TOWNSHIP
SE QUARTER SECTION 2
TWP 13 RANGE 13
HOLMES COUNTY OHIO

I CERTIFY THIS SURVEY TO BE
CORRECT TO THE BEST OF MY
KNOWLEDGE

COMPLETED JULY 1960

Ray W. Gasbarre
RAY W. GASBARRE, R.S.M.
ENGINEERING ASSOCIATE
P.O. BOX 157
WOOSTER, OHIO



Previous figure of 1174.4
was incorrect.
Correction made by Ray W. Gasbarre

13.83 Ac.

(SURVEYED FEBRUARY 1960)

- - IRON CORN FD
- - IRON CORN SET
- - POINTS ON CURVES
- - STONE COR FD

SCALE 1" = 100'

59727

REC'D: November 8-1960
AT 2:45 O'CLOCK P.M.
RECORDED: November 10, 1960
HOLMES CO. VOL. 3 PG. 14-B
FEE: \$2.84

Cecily Anderson RECORDER

