

59457

REC'D: Sept. 10-1960

AT 9:50 CLOCK A.M.

RECORDED: Sept. 12-1960

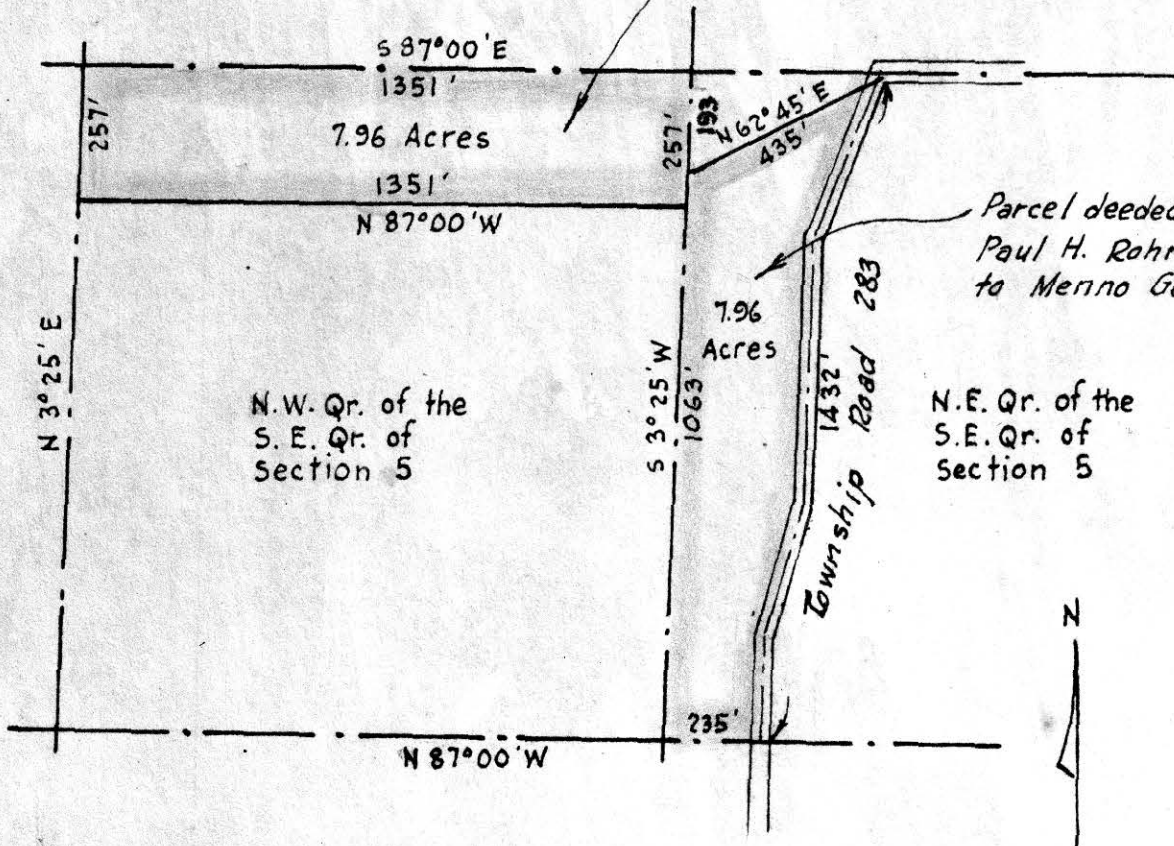
HOLMES CO. Plat VOL. 3 PG. 12 B.

FEE: \$1.00

*Evelyn Anderson* RECORDER

Parcel deeded by  
Menno Gerber to  
Paul H. Rohr

Parcel deeded by  
Paul H. Rohr  
to Menno Gerber



MAP  
SHOWING EXCHANGE  
OF PROPERTY  
BETWEEN  
MENNO GERBER  
AND  
PAUL H. ROHR  
IN

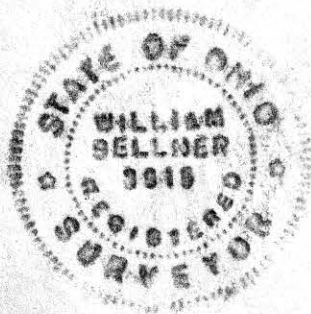
Section 5, Township 8, Range 8  
Richland Township, Holmes County  
Ohio

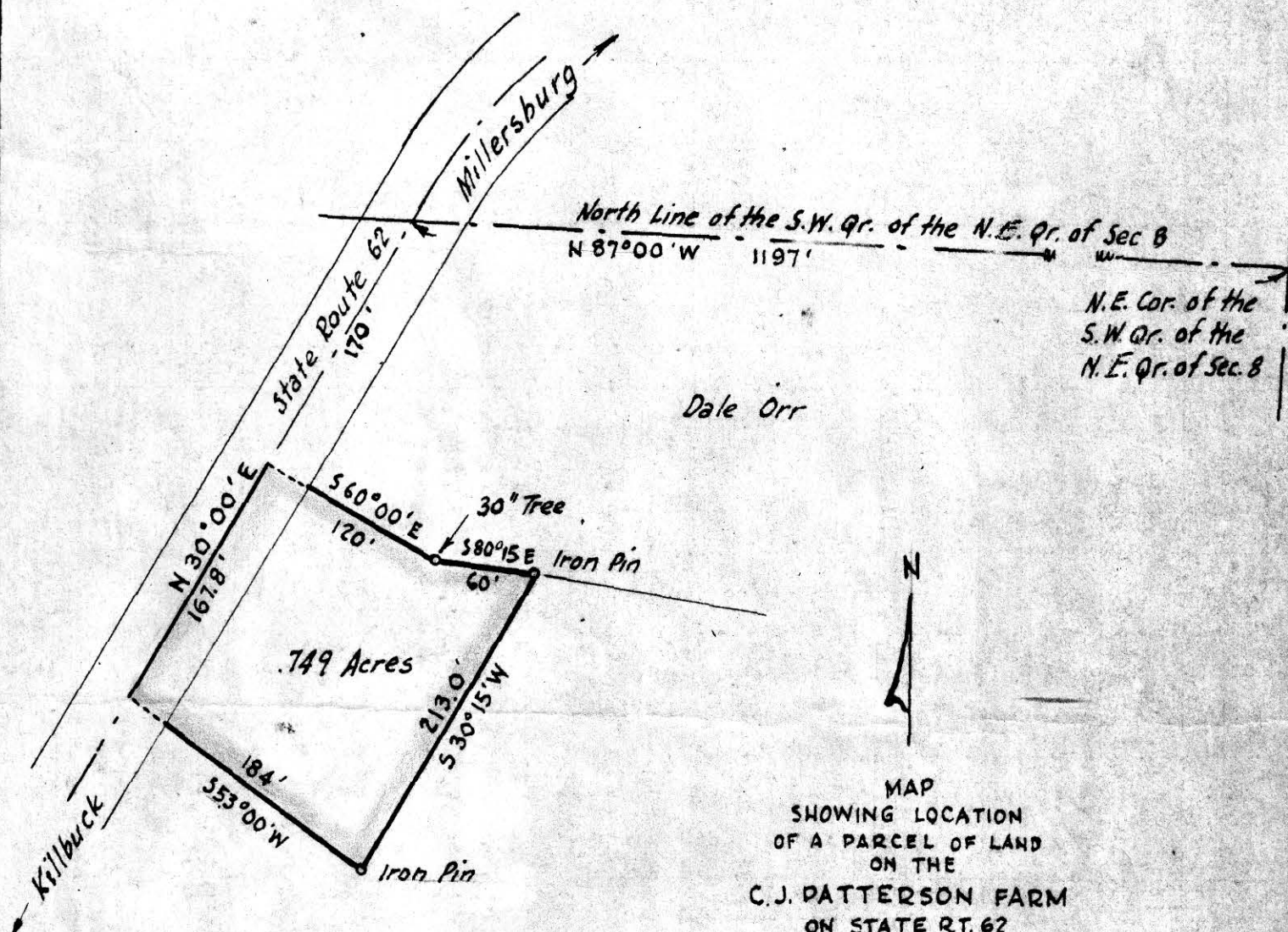
Scale 1" = 400 ft.

June 1960

Drawn from a  
survey by

*William Sellner*  
Reg. Sur. No. 3915





C. J. Patterson

MAP  
 SHOWING LOCATION  
 OF A PARCEL OF LAND  
 ON THE  
 C. J. PATTERSON FARM  
 ON STATE RT. 62  
 SOUTH OF MILLERSBURG  
 Section 8, Township 8, Range 7  
 Killbuck Township Holmes County  
 Ohio

Scale 1" = 100 ft.

June 1958

Drawn from a  
 survey by

William Sellner

Reg Sur. No 3975

59509

REC'D: September 20-1960  
 AT 1:00 O'CLOCK P.M.  
 RECORDED: Sept 20-1960  
 HOLMES CO. REC. VOL. 2 PG. 12 B  
 FEE: \$ 1.00

Erskine Anderson RECORDER

