

59310



RECTD August 9-1960

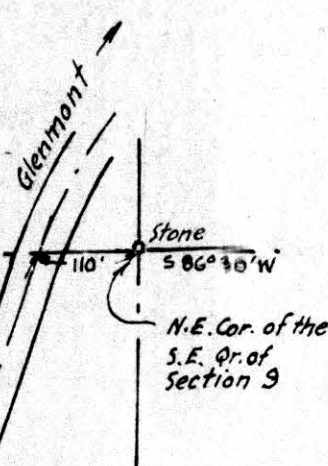
AT 11:30 AM To Me

RECORDED August 11, 1960.

HOLMES CO. Plat Vol 3 PG. 10B

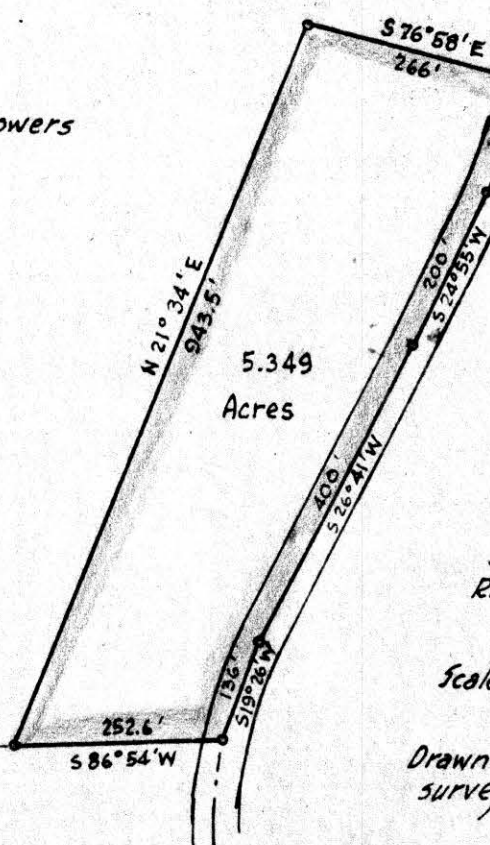
FEE: \$1.00

Evelyn Anderson RECORDER



John Bowers

John Bowers



MAP
SHOWING LOCATION
OF A PARCEL OF LAND
ON THE
JOHN BOWERS FARM
IN
Section 9, Township 8, Range 9
Richland Township, Holmes County
Ohio

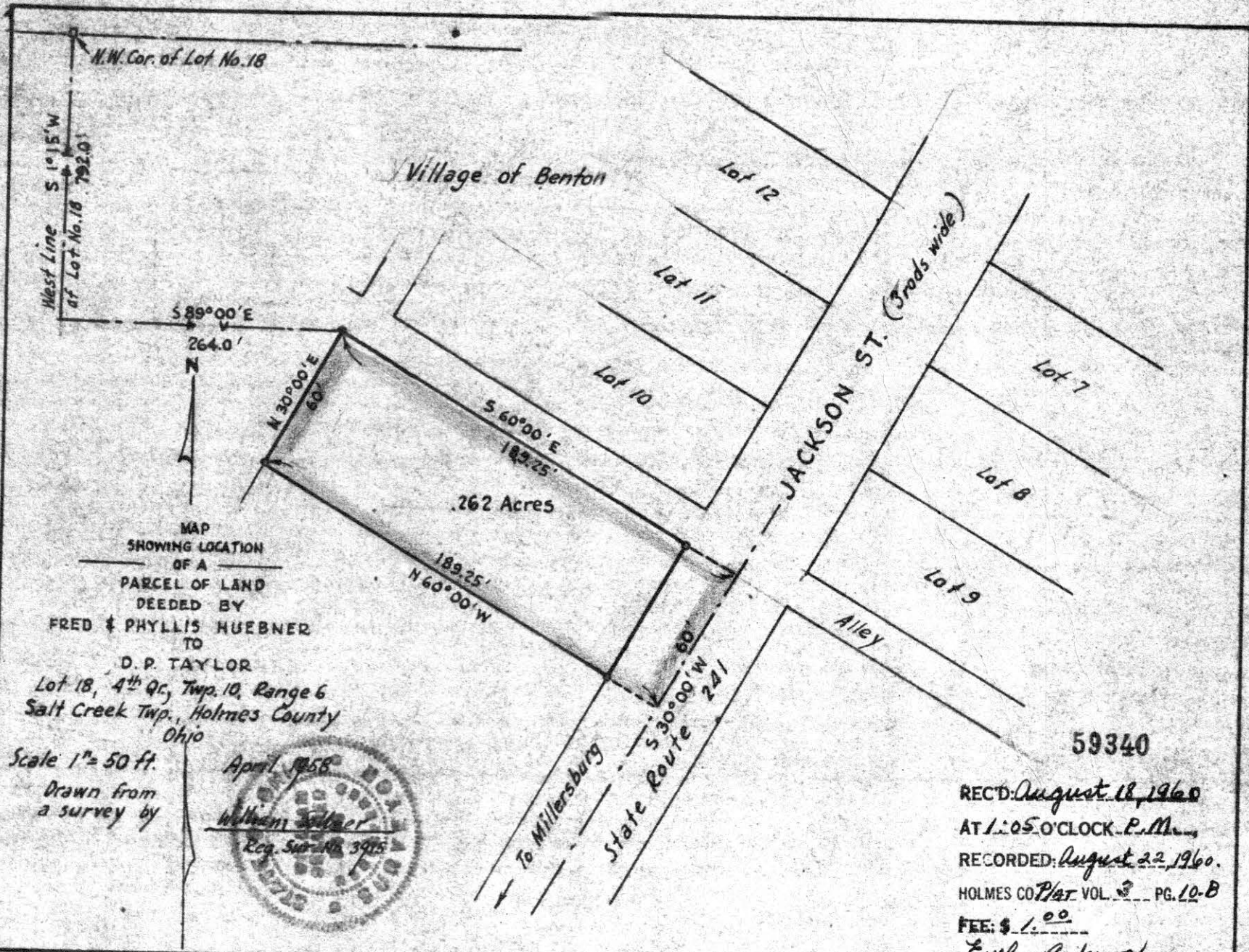
Scale 1" = 200 ft.

July 1960

Drawn from a
survey by

William Sallner
Reg. Sur. No. 3915

Alonzo Bucy



MAP
SHOWING LOCATION
OF A
PARCEL OF LAND
DEEDED BY
FRED & PHYLLIS HUEBNER
TO
D. P. TAYLOR
Lot 18, 4th Qr, Twp. 10, Range 6
Salt Creek Twp., Holmes County
Ohio

Scale 1" = 50 ft.
Drawn from
a survey by



59340

REC'D: August 18, 1960
AT 1:05 O'CLOCK P.M.,
RECORDED: August 22, 1960.
HOLMES CO. Plat VOL. 3 PG. 10-B
FEE: \$ 1.00
Evelyn Anderson
RECORDER
O.S.

59317

REC'D: August 10-1960

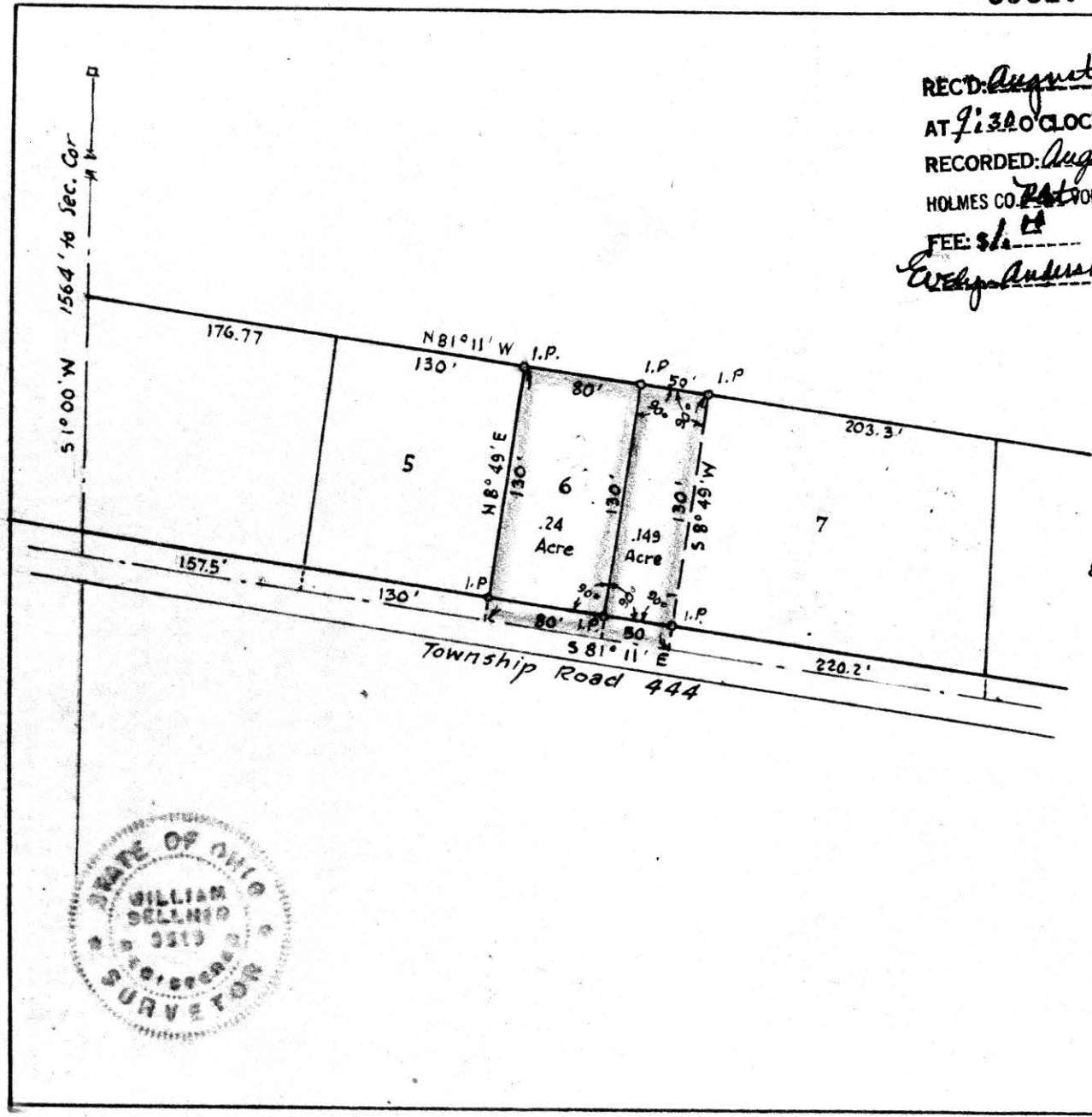
AT 9:30 O'CLOCK A.M.

RECORDED: August 11, 1960.

HOLMES CO. VOL 3 PG 10 B

FEE: \$1.00

W. J. Anderson RECORDER



8

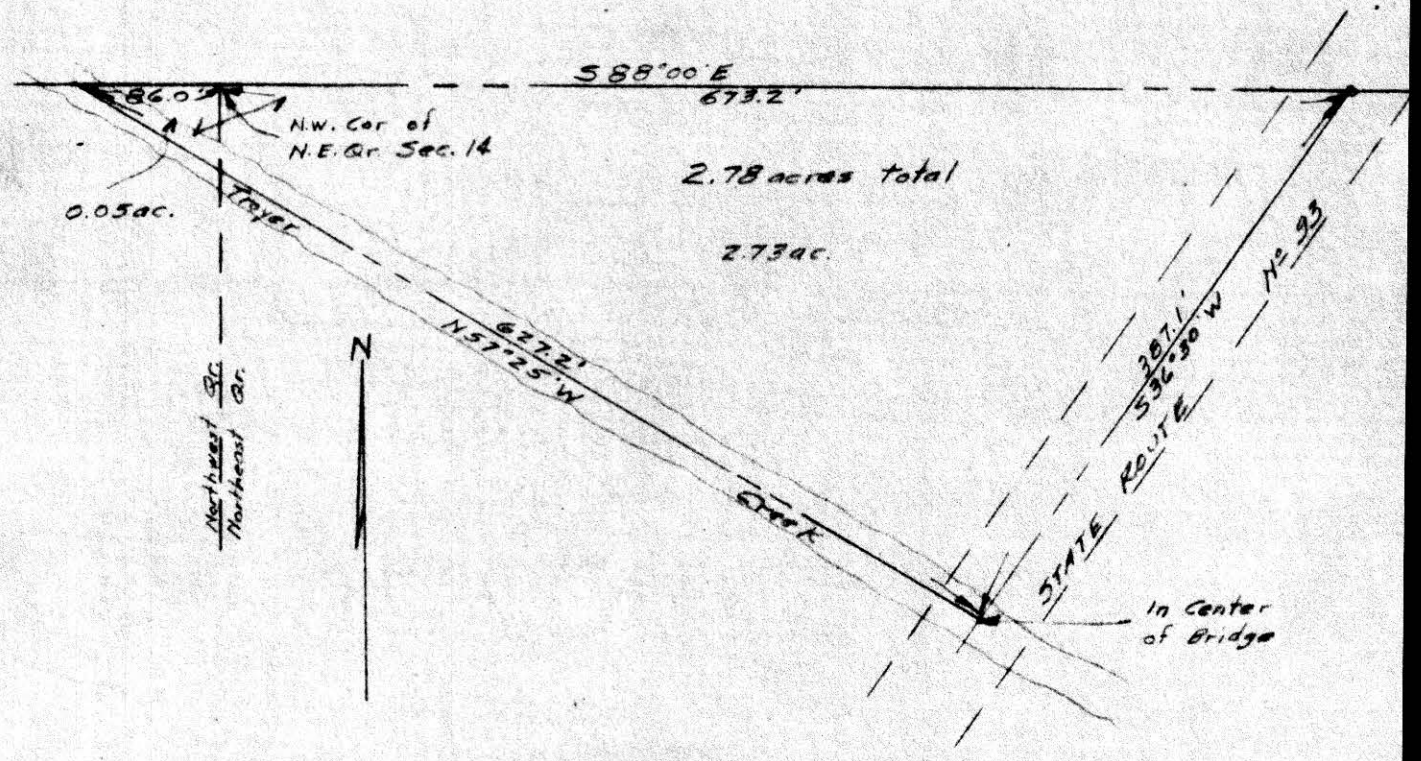
MAP
SHOWING PROPERTY
OF
ANDREW B. & MARIE MAST
IN THE
Troyer-Hochstettler Allotment
Section 20, Township 9, Range 5
Walnut Creek Twp., Holmes County
Ohio

Scale 1/4" = 100 Ft. July 1960

Drawn by *William Sellner*
Reg. Sur. No. 3915



Pt. NE + PINW 273 + 05' NW



Plat of survey made for C. A. Kuhn located in the northeast quarter and the northwest quarter of section 14 in Township 8, Range 4 in Clark Township, Holmes County.

Scale: 1 in. = 100 ft. Surveyed February 1958

59361

RECD: August 23, 1960

AT 8:45 O'CLOCK A.M.

RECORDED: August 24, 1960

HOLMES CODE VOL. 144 PG. 106

FEE: \$1.00

Evelyn Anderson, RECORDER
&c.

D. V. Miskinen
D. V. Miskinen
Reg. Surveyor # 1013

