

MAP
SHOWING LOCATION
OF THE
JOSEPH J. & LOVINA MILLER
PROPERTY

ON
STATE ROUTE 62
WEST OF BERLIN
IN
Lot 2, 4th Qr., Township 9, Range 6
Berlin Township, Holmes County
Ohio

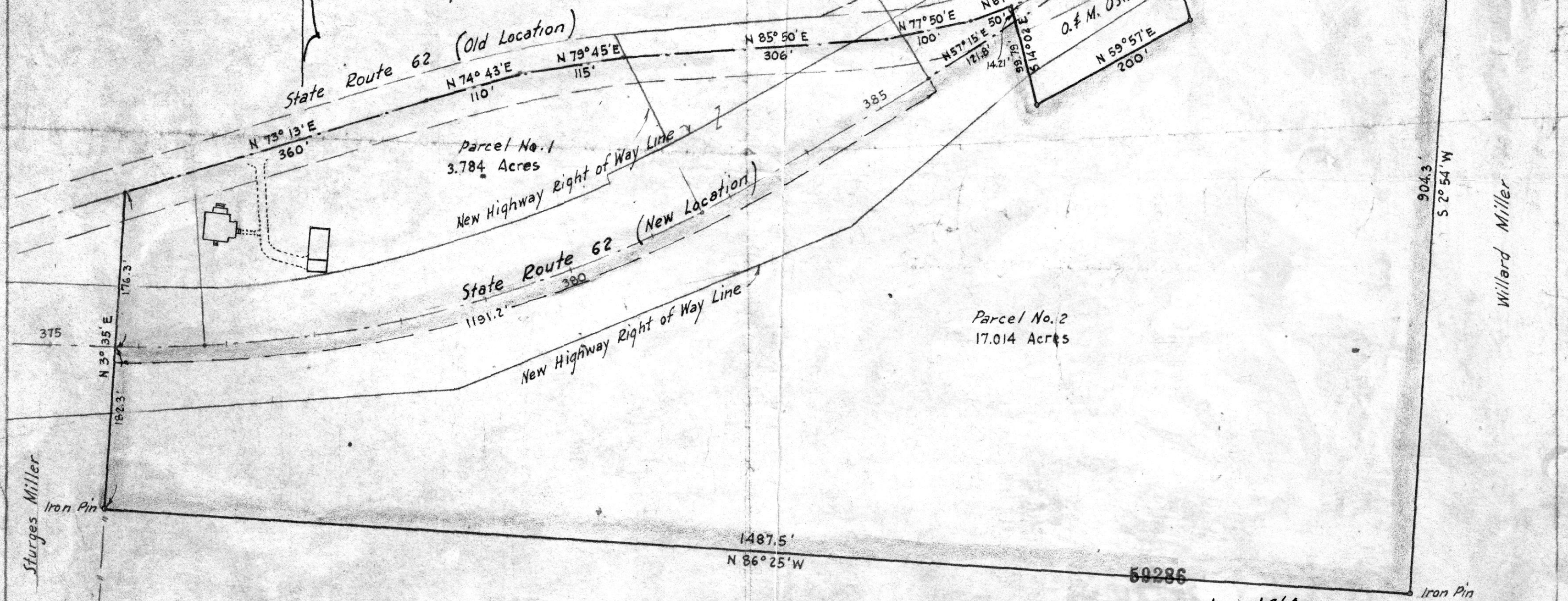
Scale 1" = 100 ft.

Drawn from a survey
and Highway Plans by

William Sellmer
Reg. Sur. No. 3915

Revised July 1960
Jan. 1958

Curve Data
P.L. = 379 + 85.62
Δ = 35°-39' Lt
Δc = 23°-39'
D = 4°-00'
L.S. = 300.00'
R = 1437.40'
θs = 6°-00'
P = 2.62'
K = 149.95'
Xc = 299.67'
Yc = 10.46'
Ts = 611.38'
Es = 74.98'
L.C. = 591.25'



Parcel No. 2
17.014 Acres

Parcel No. 1
3.784 Acres

59286

Sturges Miller
Iron Pin

Sturges Miller

RECD: August 8-1960
AT 9:15 O'CLOCK A.M.
RECORDED: August 8-1960
HOLMES CO. VOL. 3 PG. 7B
FEE: \$2.28

DEED VOL. 149 PAGE 78

W. J. Anderson
RECORDER