

MAP
SHOWING LOCATION
OF THE
BENTON CHURCH
PROPERTIES
IN THE
VILLAGE OF BENTON
Lot No. 18 of the U.S. Military Lands
Salt Creek Township
Holmes County, Ohio
Scale 1" = 50ft Oct. 1959



REC'D: March 28, 1960
AT 2:30 O'CLOCK P.M.
RECORDED: March 30, 1960
HOLMES CO. PLAT VOL 3 PG. 94
FEE: \$1.00
Evelyn Anderson, RECORDER

Drawn from
a survey by

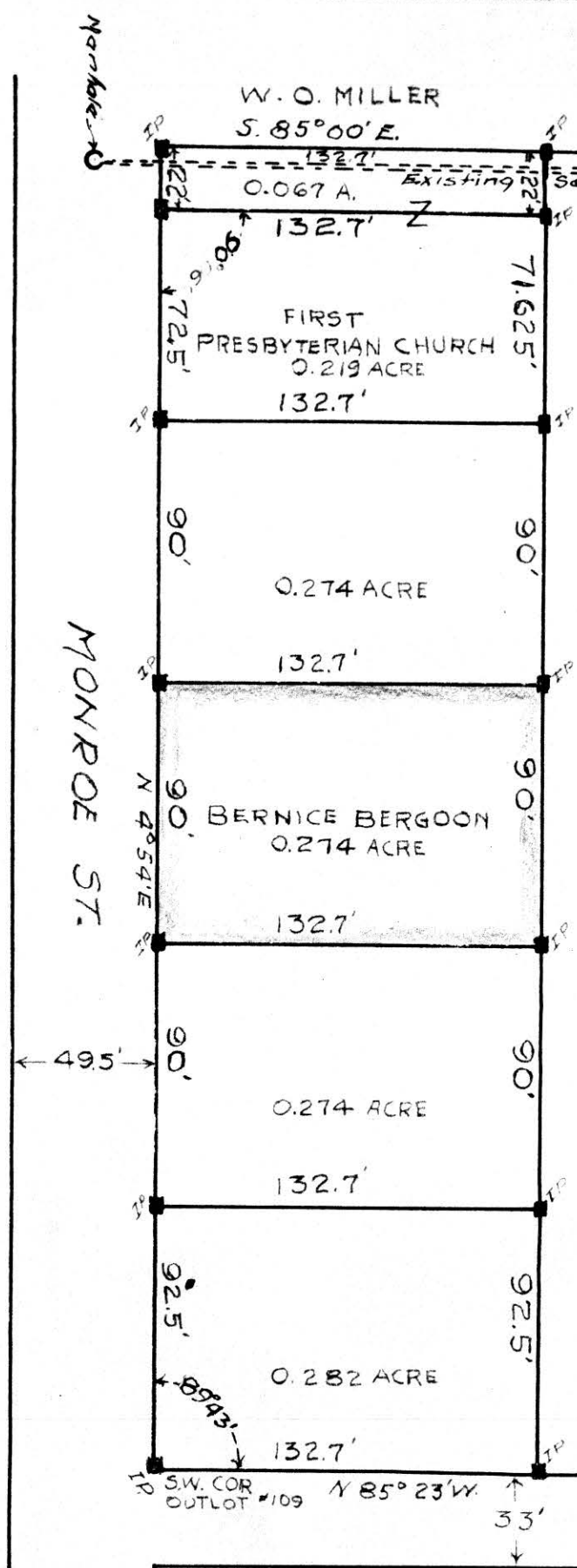
William Sellner
Reg. Sur. No. 3915

RECD: April 1 - 1960
 AT 3:35 O'CLOCK P.M.
 RECORDED: April 4, 1960
 HOLMES CO. PLAT VOL. 3 PG. 94
 FEE: \$1.00
Curry & Associates
 RECORDER



PLAT
 SHOWING DIVISION
 OF THAT PART OF
 S. PART OF OF OUTLOT NO. 109
 FRONTING ON N. MONROE ST.
 IN THE
 VILLAGE OF MILLERSBURG
 HOLMES CO., OHIO
 SCALE 1" = 50'

NOTE: Iron pins are 1"x36"



H. H. PALMER

LOT 34

I certify this PLAT to be a correct
 return of field notes of a survey
 made by me March 23, 1960.
H. H. Palmer Reg. Surv
 NO. 290

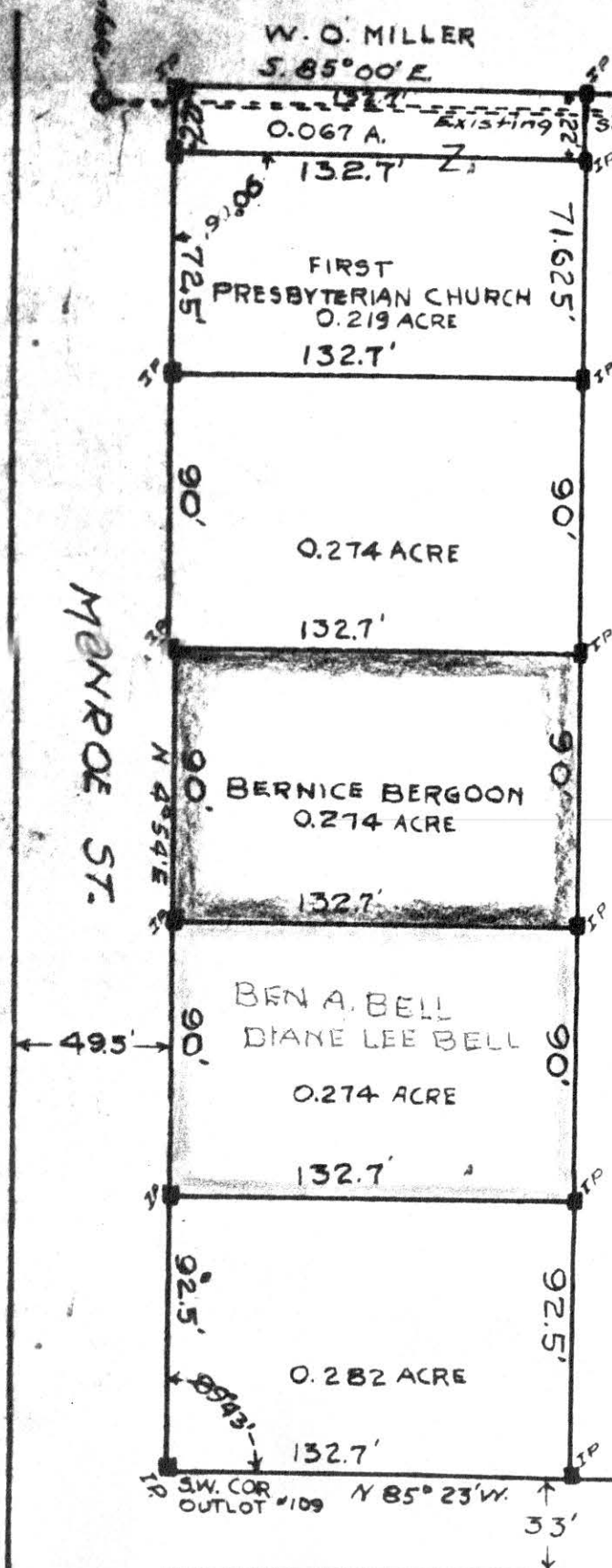
58537

RECORDED: 9-1960
AT 8:55 O'CLOCK P.M.
RECORDED: April 11, 1960
HOLMES CO. REG. VOL. 3 PG. 94
FEE: \$1.03
H.H. Palmer, Recorder



PLAT
SHOWING DIVISION
OF THAT PART OF
S. PART OF OF OUT LOT No. 109
FRONTING ON N. MONROE ST.
IN THE
VILLAGE OF MILLERSBURG
HOLMES CO. OHIO
SCALE 1" = 50'

NOTE: Iron pins are 1x1"x36"



LOT 34

I certify this PLAT to be a correct
return of field notes of a survey
made by me March 23, 1960.
H.H. Palmer, Reg. Surv.
NO. 290

103 sq. in.