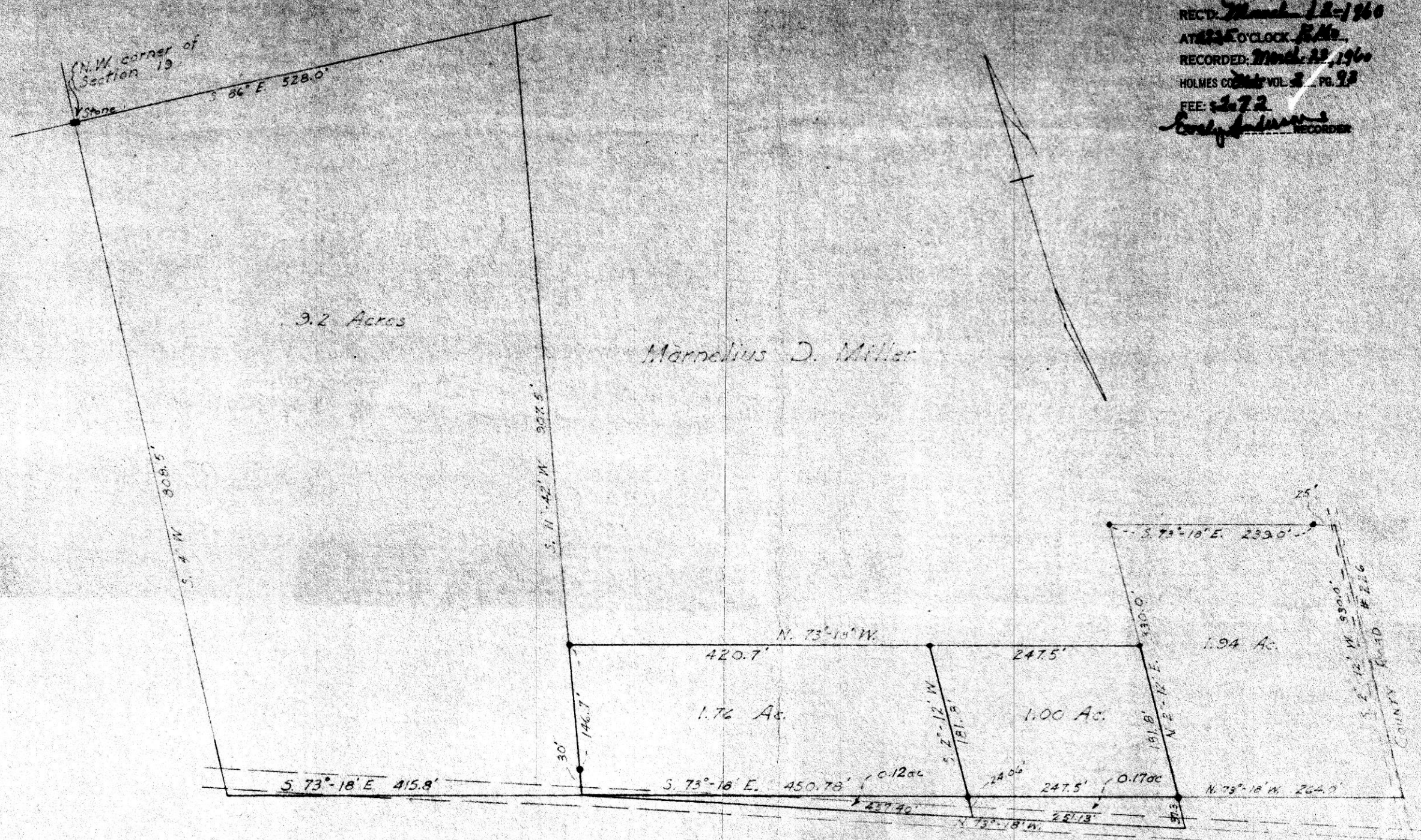


58427

REC'D: *March 12-1960*  
 AT *12:35* O'CLOCK *P.M.*  
 RECORDED: *March 12, 1960*  
 HOLMES COUNTY VOL. *3* PG. *93*  
 FEE: *2.72*  
*Earl Johnson* RECORDER



PLAT OF SURVEY OF A  
 1.00 Acre and 1.76 Acre  
 Tract in  
 Walnut Creek Township  
 Holmes County  
 FOR  
 Marnelius D. Miller  
 Route #5 Millersburg  
 Scale - 1" = 100'

Arnold, Rosch & Hartline  
 Registered Engineers  
 New Philadelphia, Ohio  
 November, 1959