

#130 566 3-72-B

12" x 15 1/2"

LVOL 3 PAGE 86

59226

RECD: July 28-1960

AT 12:50'clock P.M.

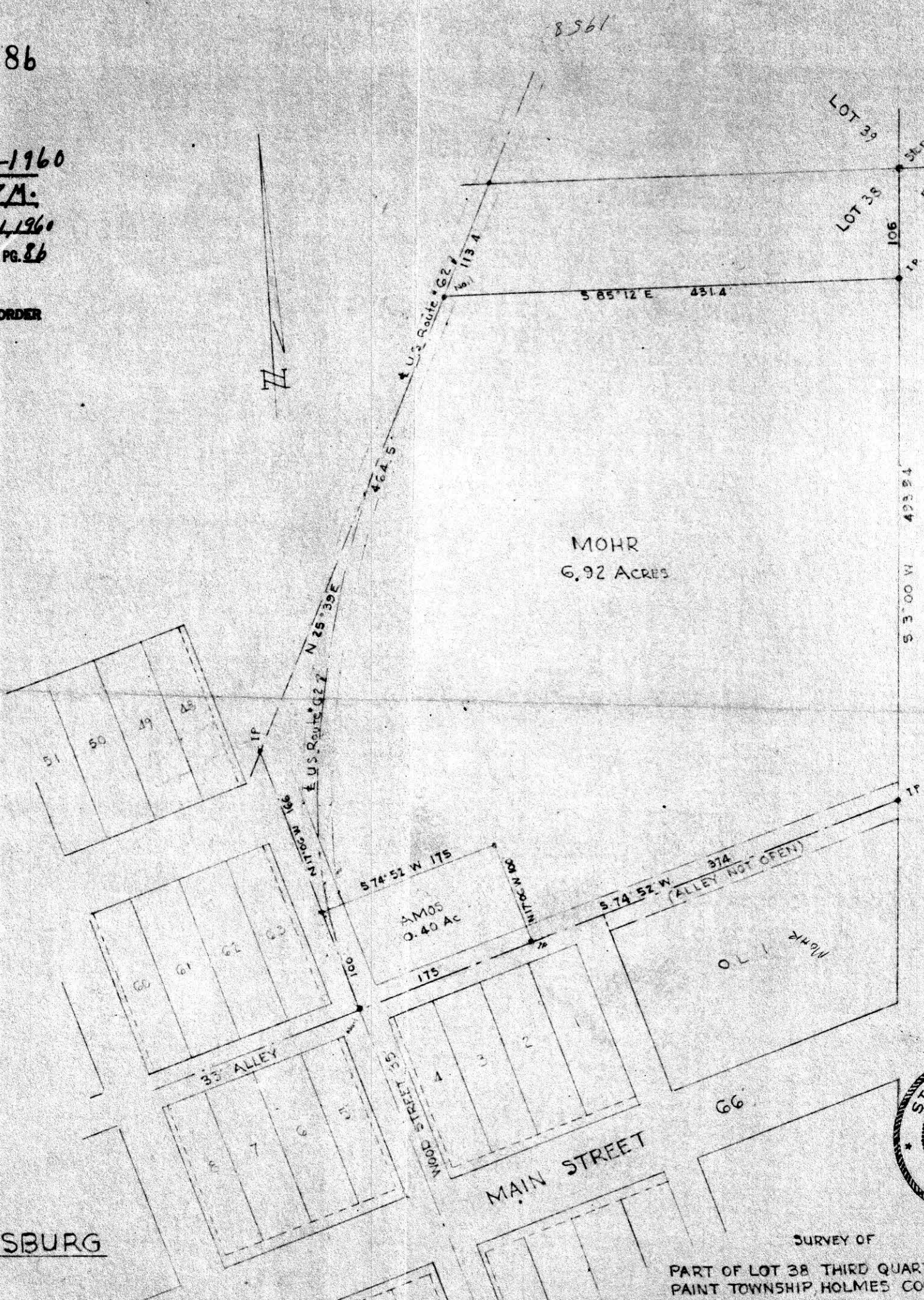
RECORDED: August 1, 1960

HOLMES CO Plat VOL 3 PG 86

FEE: \$1.85

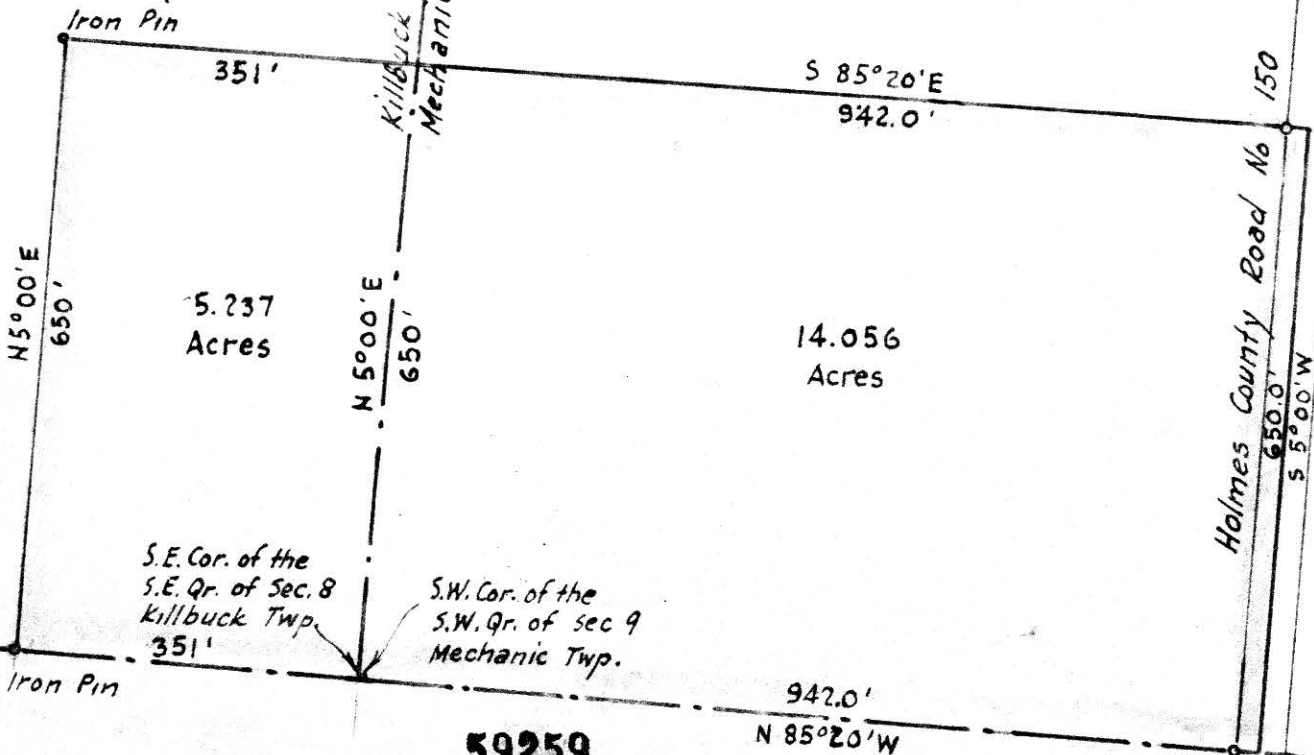
C. Anderson RECORDER

WINESBURG



SURVEY OF
 PART OF LOT 38 THIRD QUARTER, TWR 10, R. 4,
 PAINT TOWNSHIP HOLMES COUNTY, OHIO
 FOR
 R. MOHR
 BY
 R. C. Schneider Reg. Surveyor #4177
 SCALE: 1"=100' MAY 1960

Ralph Straits



S.E. Cor. of the
S.E. Qr. of Sec. 8
Killbuck Twp. 351'

S.W. Cor. of the
S.W. Qr. of sec 9
Mechanic Twp.

Ralph Straits

N

MAP
OF A PARCEL OF LAND
ON THE
RALPH & CAROLINE STRAITS
FARM
IN
Section 8, Twp. 8, Range 6
Killbuck Township
AND
Section 9, Twp. 8, Range 6
Mechanic Township
Holmes County - Ohio

59259

REC'D: August 2-1960
AT 11:30 O'CLOCK A.M.
RECORDED: August 2-1960
HOLMES CO. PLAT VOL 3 PG. 8B
FEE: \$1.00

Evelyn Anderson RECORDER

Scale 1" = 200 ft July, 1960

Drawn from a survey by William Sellner
Reg. Sur. No. 3915

