

59201

RECT'D: July 22-1960

AT 4:20 O'CLOCK P.M.

RECORDED July 23-1960

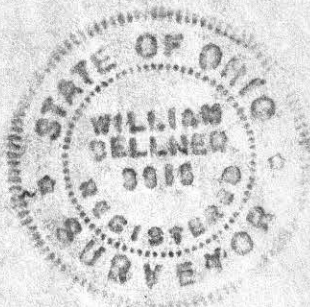
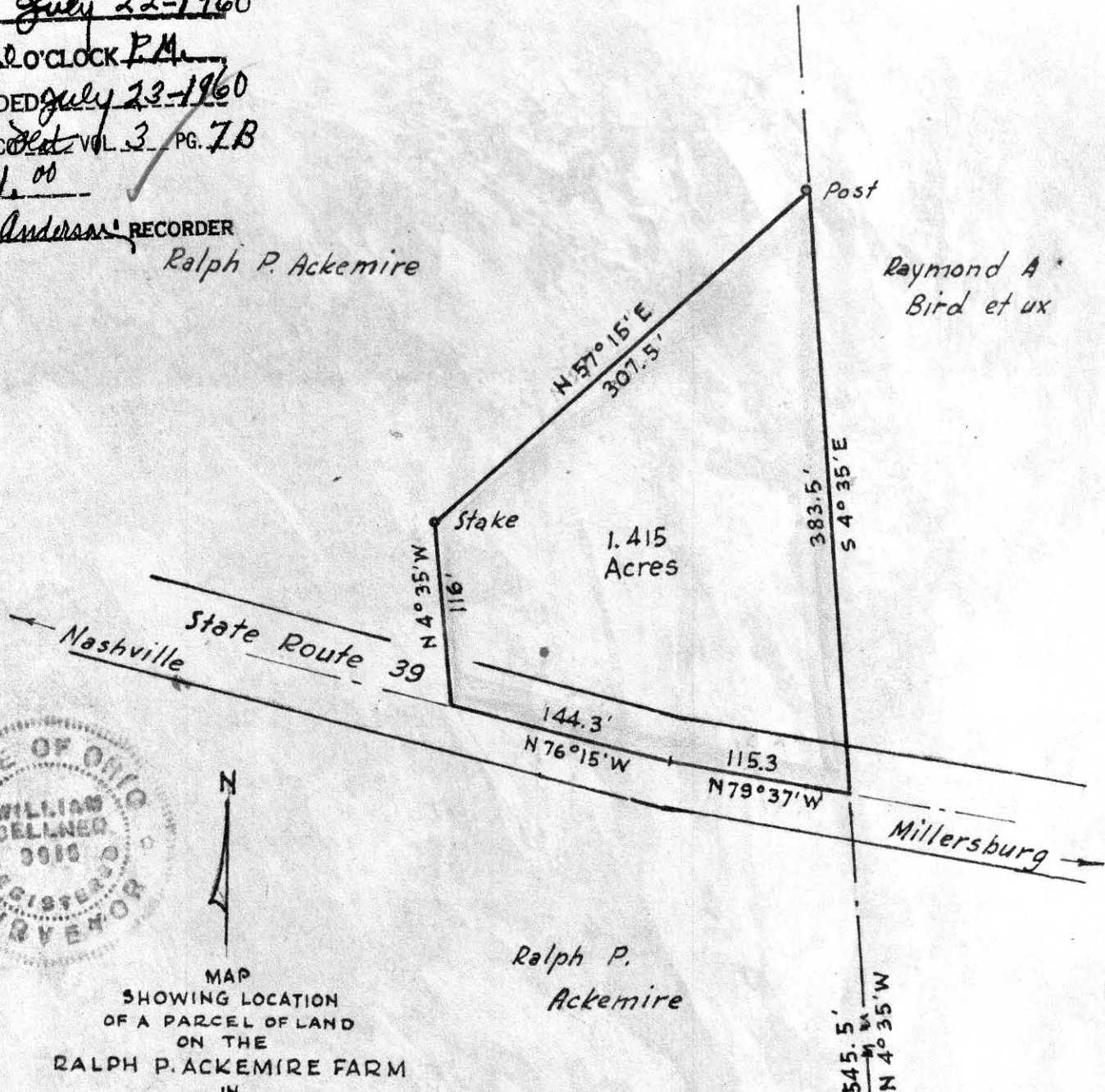
HOLMES CO. Dist VOL. 3 PG. 7B

FEE: \$ 1.00

C Evelyn Anderson RECORDER

Ralph P. Ackemire

Raymond A. Bird et ux



MAP  
SHOWING LOCATION  
OF A PARCEL OF LAND  
ON THE  
RALPH P. ACKEMIRE FARM  
IN  
Lot No. 16, 2<sup>nd</sup> Qr. Twp., Twp. 9, Range 7  
Hardy Township, Holmes County  
Ohio

Ralph P. Ackemire

Scale 1"=100 ft

May 1960

Drawn from a survey by

William Sellner  
Reg. Sur. No. 3915

S.E. Cor. of Lot No. 16

450.6' S 85°25'W

59220

REC'D: *July 27 1960*

AT 2:05 O'CLOCK P.M.

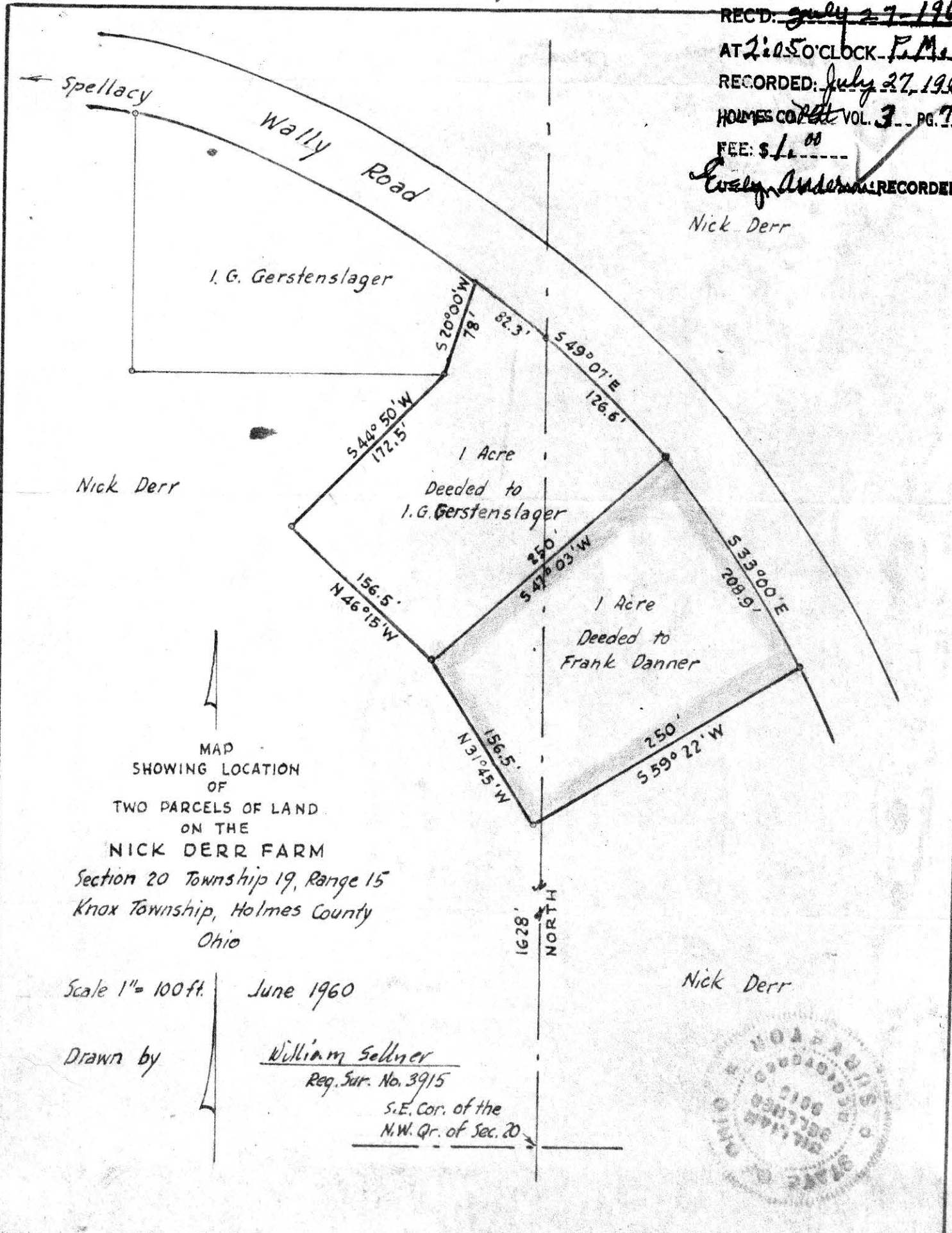
RECORDED: *July 27 1960*

HOLMES CO. *Vol. 3* PG. *74*

FEE: \$ *1.00*

*Evelyn Anderson* RECORDER

*Nick Derr*



*Nick Derr*

1628' NORTH

*Nick Derr*

MAP  
SHOWING LOCATION  
OF  
TWO PARCELS OF LAND  
ON THE  
NICK DERR FARM

Section 20 Township 19, Range 15  
Knox Township, Holmes County  
Ohio

Scale 1" = 100ft.

June 1960

Drawn by

William Sellner  
Reg. Sur. No. 3915

S.E. Cor. of the  
N.W. Qr. of Sec. 20

