

57794

Earnest & Ida Rumbaugh

REC'D: October 27-1959
AT 3:25 O'CLOCK P.M.
RECORDED: Oct. 28, 1959
HOLMES CO. Vol. 3 PG. 79
FEE: \$ 1.00

Evelyn Anderson RECORDER

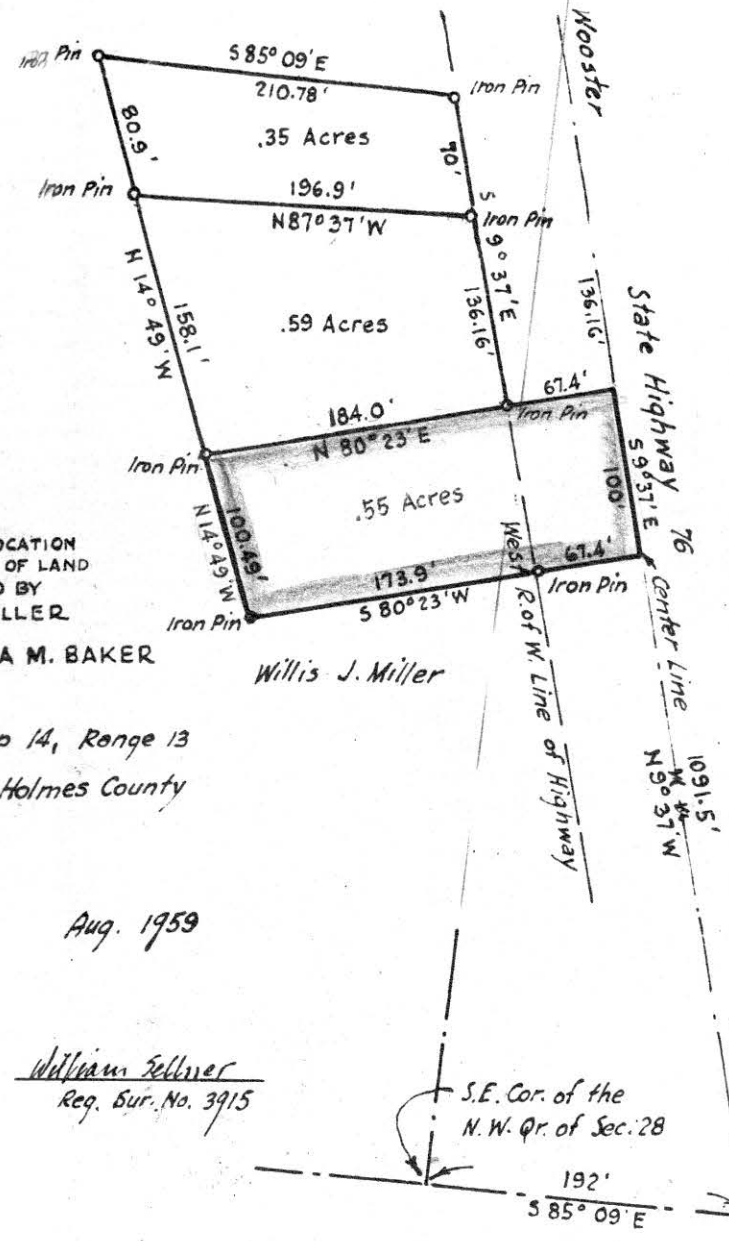
Willis J. Miller



MAP
SHOWING LOCATION
OF A PARCEL OF LAND
DEEDED BY
WILLIS MILLER
TO

CHESTER & LENA M. BAKER
IN

Section 28, Township 14, Range 13
Prairie Township, Holmes County
Ohio



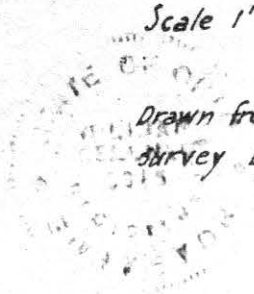
Aug. 1959

Scale 1" = 100 ft.

Drawn from a
survey by

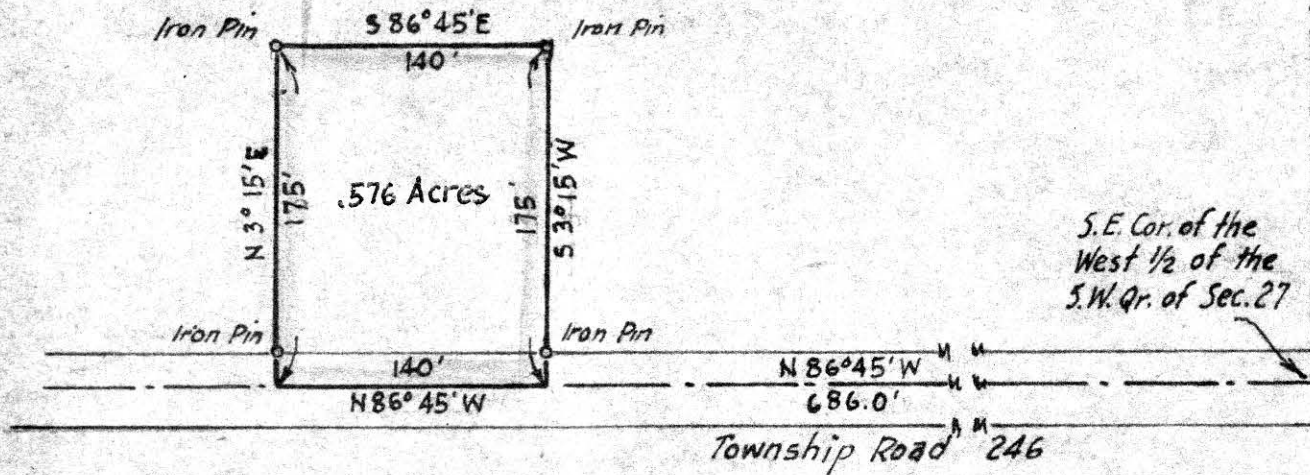
William Sellner
Reg. Sur. No. 3915

S.E. Cor. of the
N.W. Qr. of Sec. 28



Alvin Stutzman

Yost
Hostetler



MAP
SHOWING LOCATION
OF A PARCEL OF LAND
DEEDED BY

ALVIN STUTZMAN
TO

WILLIAM A. BRINKERHOFF
Section 27, Township 14, Range 13
Prairie Township, Holmes County
Ohio

Scale 1" = 100 ft.

August 1959

Drawn from a
survey by

William Seltner
Reg. Sur. No. 3915

57838

Albert J. Miller

REC'D: November 5-1959
AT 11:15 O'CLOCK A.M.

RECORDED: November 5-1959

HOLMES CO. Plat VOL. 3 PG. 79

FEE: \$ 4.00

Everett Anderson RECORDER

