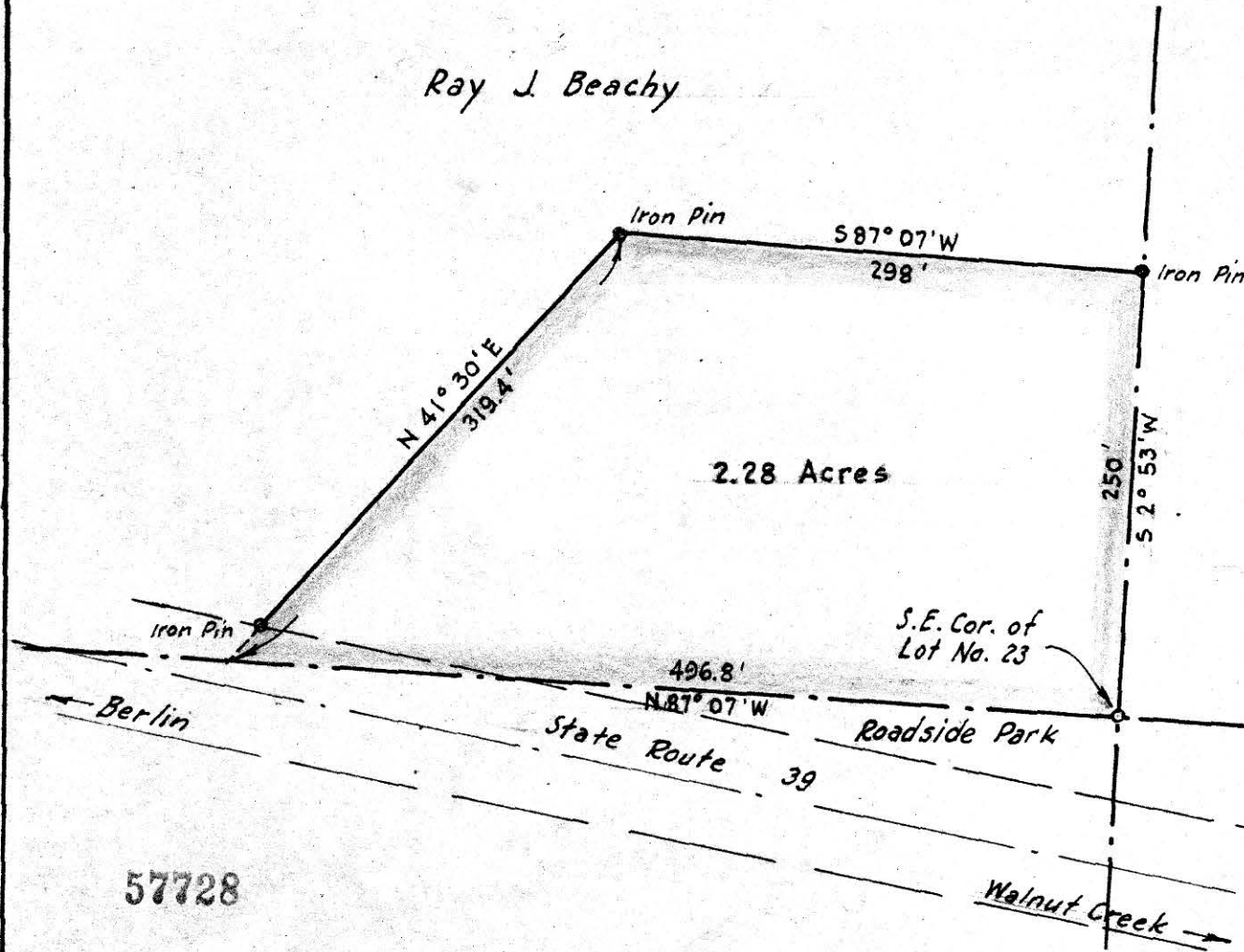


Ray J. Beachy



2.28 Acres

Emanuel J. Yoder

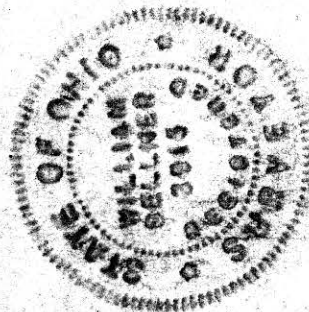


MAP
SHOWING LOCATION
OF A PARCEL OF LAND
DEEDED BY
RAY J. BEACHY

TO THE
BETHEL FELLOWSHIP CHURCH
Lot 23, 3rd Qr., Twp. 9, Range 5
Berlin Township, Holmes County
Ohio

57728

Joe E. Kline



Scale 1" = 100 Ft.

July 1959

Drawn from
a survey by

William Sellner
Reg. Sur. No. 3915

REC'D. October 14-1959

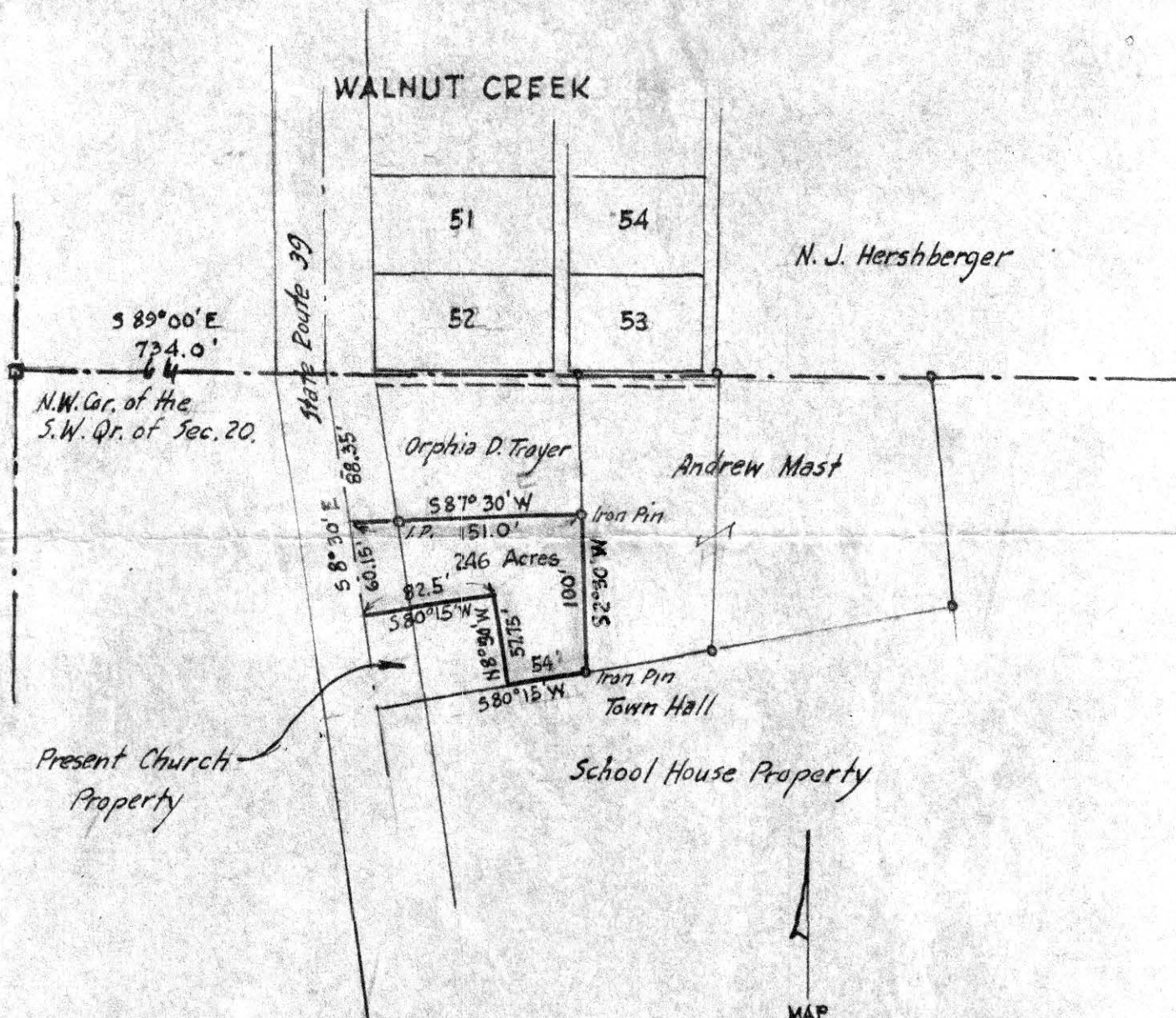
AT 12:25 O'CLOCK P.M.

RECORDED: October 14-1959

HOLMES CO. Vol 3 PG. 77

FEE: \$1.00

Coryn Anderson
RECORDER



57707

MAP
SHOWING LOCATION
OF A PARCEL OF LAND
DEEDED BY
ORPHIA D. TROYER
TO THE

WALNUT CREEK CHURCH

Section 20, Township 9, Range 7
Walnut Creek Twp., Holmes County
Ohio

Scale 1" = 100 ft.

August 1959

REC'D: October 9-1959

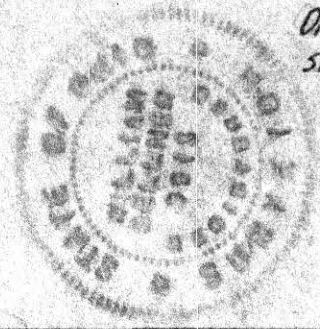
AT 10:00 O'CLOCK A.M.

RECORDED: October 10-1959

HOLMES CO. Plat VOL. 3 PG. 77

FEE: \$1.00

Cecily Anderson RECORDER



Drawn from a
survey by

William Selmer

Reg. Sur. No. 3915