

N

MAP

SHOWING LOCATION OF A PARCEL OF LAND DEEDED BY JOSEPH A. DEMBOSKI TO

~~DE X H A S S K N U D S I N E X M O R E S~~  
 Theo-Leen Realty, Inc.  
 Lots 16 & 17, 1<sup>st</sup> Qr., Twp. 9, Range 7  
 Hardy Township, Holmes County  
 Ohio

57627

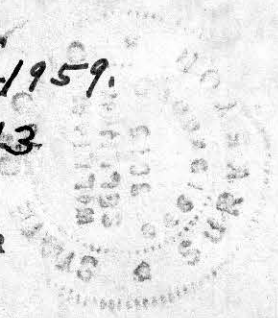
REC'D: Sept. 25-1959  
 AT 2:55 O'CLOCK P.M.  
 RECORDED: Sept. 25-1959.  
 HOLMES CO. Vol. 3 PG. 73  
 FEE: \$1.00  
Evelyn Anderson  
 RECORDER

Scale 1" = 200 ft.

Drawn from a survey by

July 1959

William Sellner  
 Reg. Sur. No. 3915

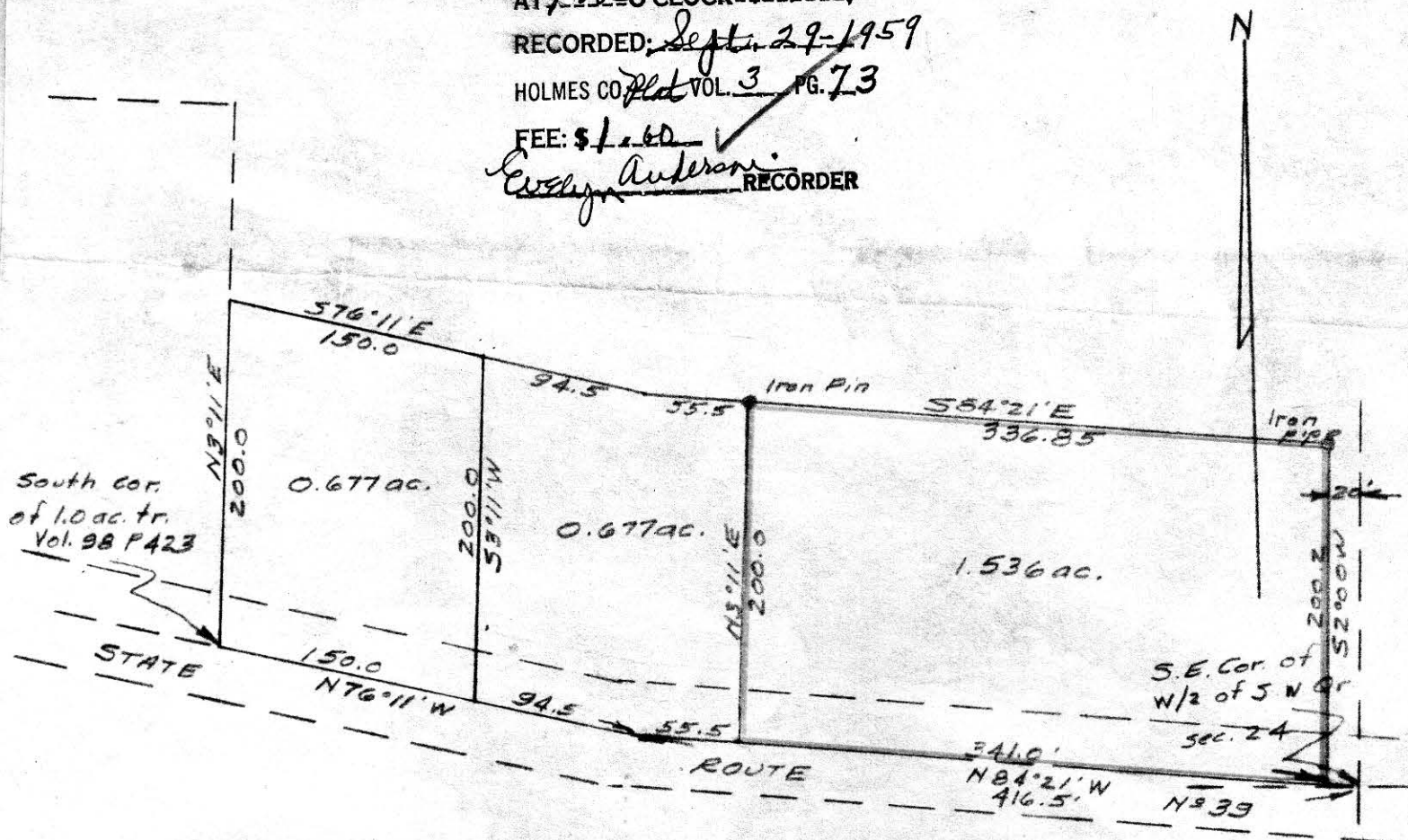


8 1/2 x 8 1/2

57647

REC'D: Sept 29-1959  
AT 1:05 O'CLOCK P.M.  
RECORDED: Sept 29-1959  
HOLMES CO. Plat VOL. 3 PG. 73

FEE: \$1.60  
 Evelyn Anderson RECORDER



Plat of survey for John E. Shetler located in the west half of the southwest quarter of section 24 Township 9, Range 4, Walnutcreek Twp. Holmes Co.

Scale: 1 in. = 100 ft.

March 21, 1959

Rev. Aug. 20, 1959

no buildings

D.Y. Miskimen  
D.Y. Miskimen  
Reg. Surveyor # 4043

