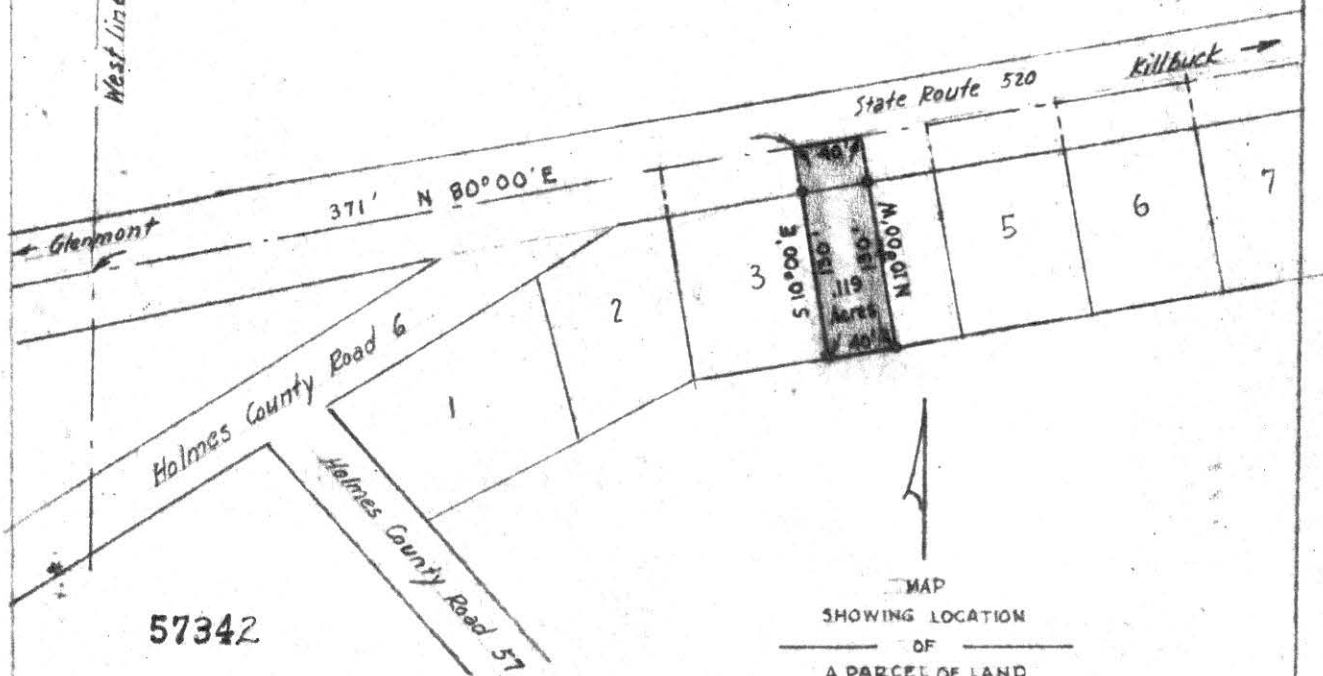


West line of the S.W. Qr. of Sec. 10

SEE ALSO PLAT RECORD 2 AT PAGE 113.



57342

RECORDED August 7-1959
 AT 10:30 O'CLOCK P.M.
 RECORDED: Aug 7, 1959
 HOLMES CO. Plat VOL 3 PG 66
 FEE: \$1.⁰⁰
 Evelyn Anderson RECORDER



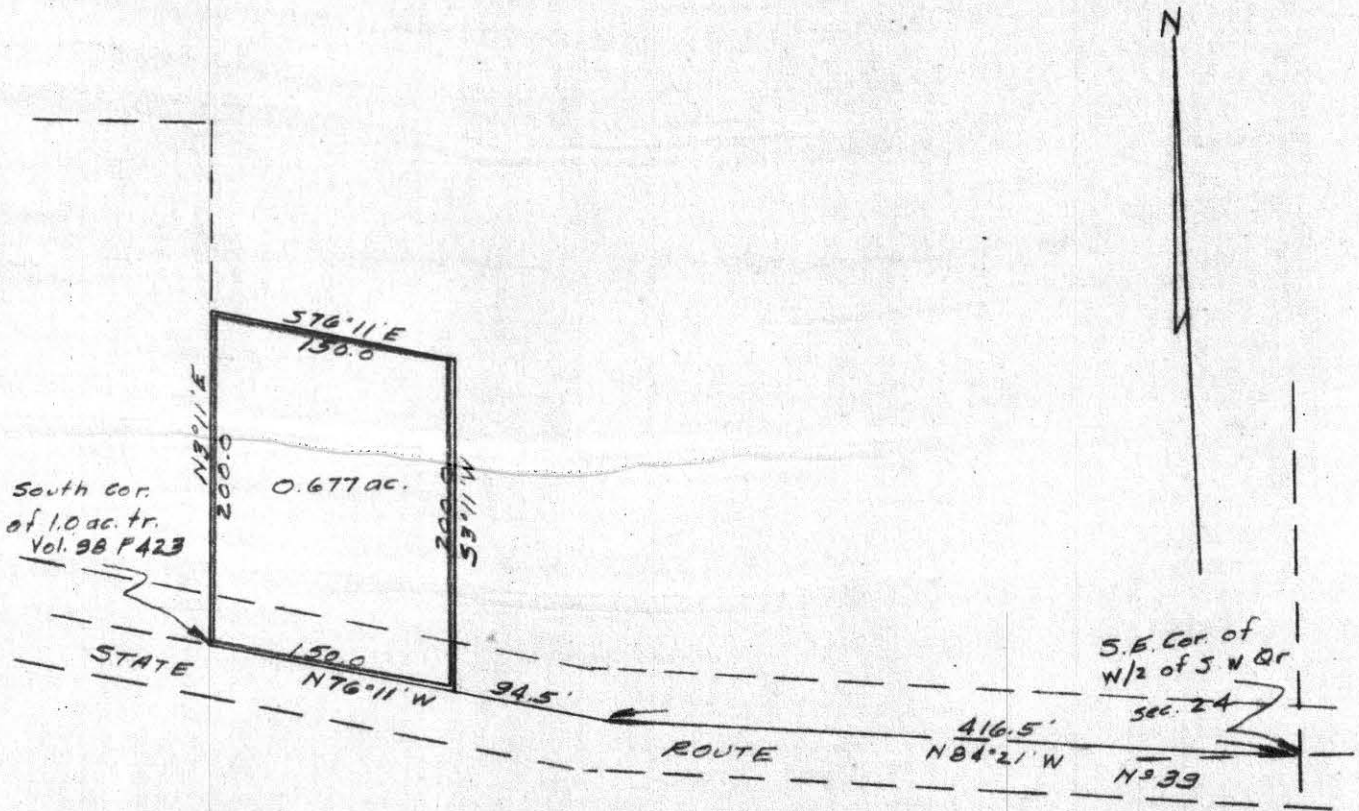
MAP
 SHOWING LOCATION
 OF
 A PARCEL OF LAND
 DEEDED BY
 JAMES DELORE
 TO
 M.D. PETRY

Section 10, Township 8, Range 8
 Killbuck Township, Holmes County
 Ohio

Scale 1" = 100 ft. Jan. 1958

Drawn from a
 survey by

William Sellner
 Reg. Sur. No. 3915



Plat of survey for John E. Shetler located in the west half of the southwest quarter of section 24 Township 9, Range 4, Walnutcreek Twp. Holmes Co.

57372 Scale: 1 in. = 100 ft. March 21, 1959

REC'D: Aug. 11-1959

AT 2:50 O'CLOCK P.M.

RECORDED: Aug 14, 1959

HOLMES CO. Plat VOL. 3 PG. 66

FEE: \$ 1.00

Evelyn Anderson RECORDER

D.Y. Miskimen
D.Y. Miskimen
Reg. Surveyor # 408

