

110 sq. m.

HOLMES COUNTY
RIPLEY TOWNSHIP.

PART OF SOUTH CENTRAL PART
S. W. QUARTER SECS
T-17-R-14

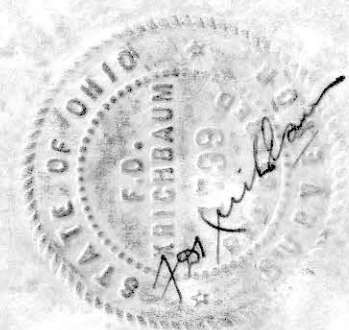
I CERTIFY THAT THIS DRAWING MADE FROM FIELD
NOTES OF A SURVEY MADE JULY 18 1959 FOR THE
OWNERS W^M L. BARNES & EDNA F BARNES BY VIRTUE OF
DEED VOL 96 PAGE 566 TO TRANSFER 1.8 ACRES
TO WAYNE BARNES.

SIGNED F. D. Killian

REG SURVEYOR 1799 STATE OF OHIO

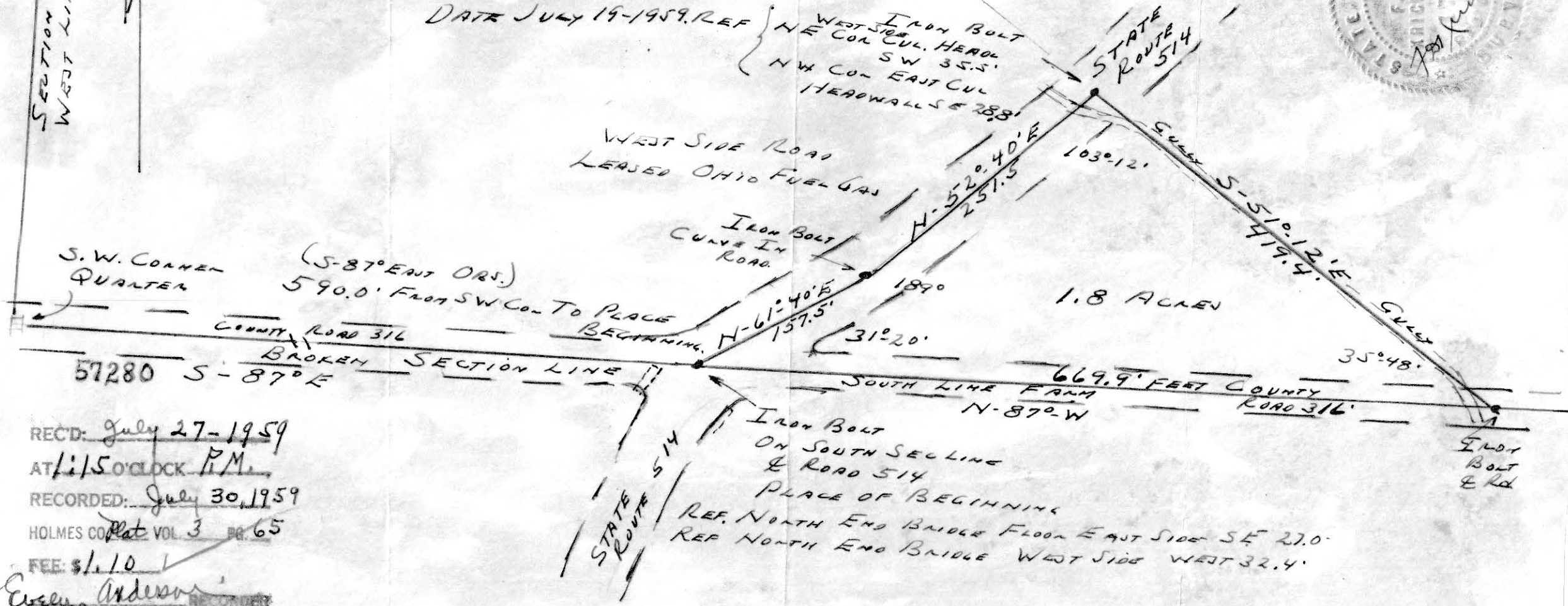
SCALE 1"=100.0'

DATE JULY 19-1959. REF



SECTION LINE
WEST LINE FARM

NORTH
MAGNETIC BEARING
N-30°-E OBS. THIS
SURVEY
NO MEAS ON BEARING
ON FARM DEED



REC'D: July 27-1959
AT 1:15 O'CLOCK P.M.
RECORDED: July 30, 1959
HOLMES CO. Plat VOL 3 PG 65
FEE: \$1.10

Essley Anderson RECORDER

