

Samuel Crider

N.E. Cor. of the  
N.E. Qr. of Sec. 15

132'  
S 2° 30' W

Holmes County Road No. 6

Killbuck

Glenmont

S 89° 45' E  
254.5'

N 89° 45' W  
452'

1.06 Acres

N 4° 10' W  
183.5'

179.8'  
S 1° 10' E

244.2'  
N 88° 50' W

Lane

Samuel Crider



MAP  
SHOWING LOCATION  
OF A PARCEL OF LAND  
DEEDED BY  
SAMUEL CRIDER  
TO  
WALTER CRIDER

On Holmes County Rd. 6  
Section 15, Township 8, Range 7  
Richland Township, Holmes County  
Ohio

56859

REC'D: May 25-1959

AT 3:40 O'CLOCK P.M.

RECORDED: May 27-1959

HOLMES CO. plat VOL. 3 PG. 55

FEE: \$ 1.00

RECORDED

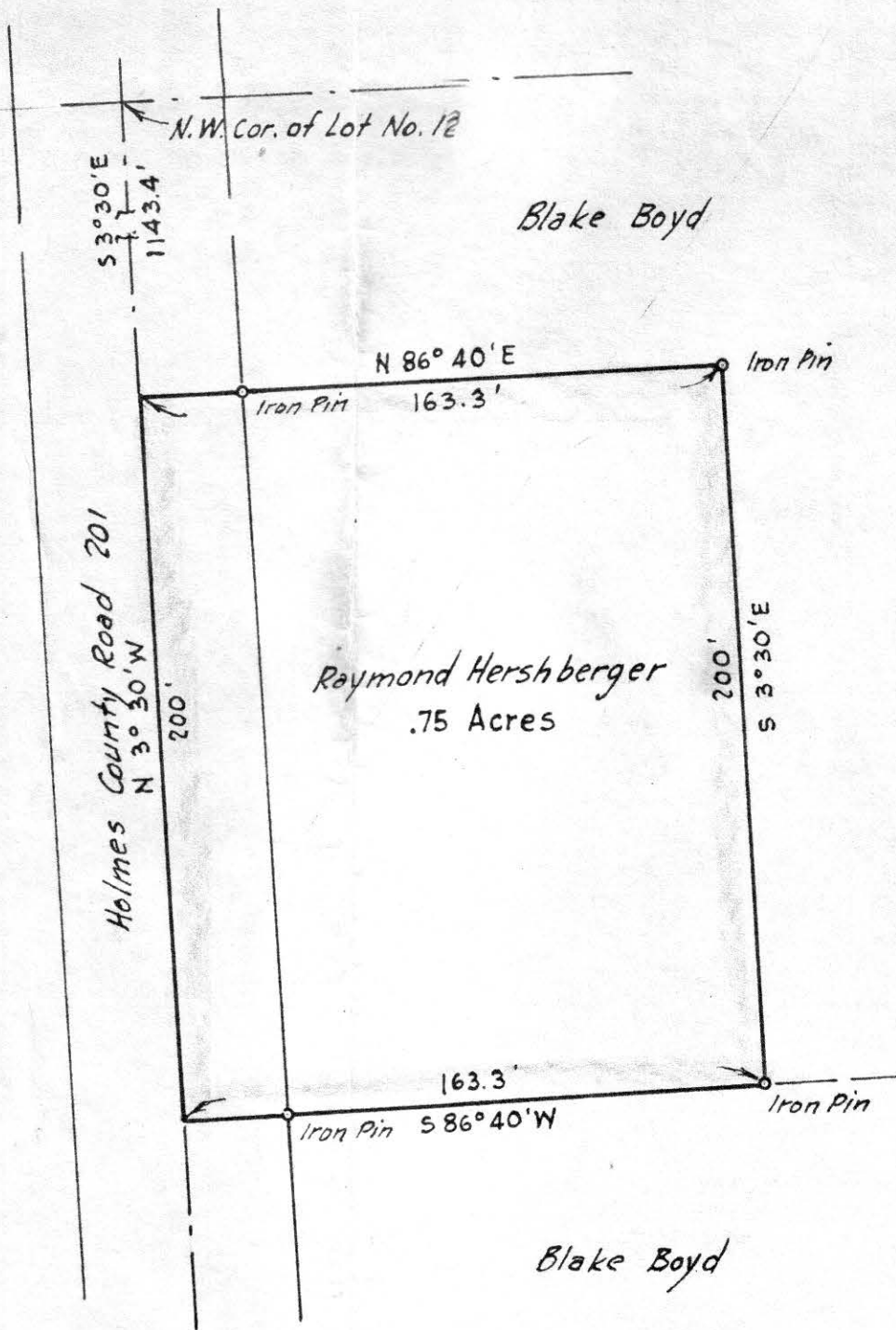


Scale 1" = 100 ft.

May 1959

Drawn from  
a survey by

William Sellner  
Reg. Sur. No. 3915



MAP  
SHOWING LOCATION  
OF A PARCEL OF LAND  
DEEDED BY

BLAKE BOYD  
TO  
RAYMOND HERSHBERGER

Lot 12, 1<sup>st</sup> Qr. 4<sup>th</sup> Twp. Twp 9, R. 6  
Berlin Township, Holmes County  
Ohio

Scale 1" = 50 ft.

March 1959

Drawn from a  
survey by

William Sellner  
Reg. Sur. No. 3915



56934

RECD: June 5-1959  
AT 9:45 O'CLOCK A.M.  
RECORDED: June 5-1959  
HOLMES CO. Ret VOL. 3 PG. 55  
FEE: \$1.00

Blake Boyd

Evlyn Anderson RECORDER

56873

REC'D: May 26, 1959  
AT 3:15 O'CLOCK  
RECORDED: May 27-1959  
HOLMES CO. PLAT VOL. 3 PG. 55  
FEE: \$1.00  
Evelyn Anderson RECORDER  
s.a.

S 87°00' E  
279'  
N.W. Cor. of the  
S.E. Qr. of Sec. 10

Clark  
Whitmyer

Jay Dye



MAP  
SHOWING LOCATION  
OF A PARCEL OF LAND  
DEEDED BY  
CLARK WHITMYER  
TO  
ESTHER DYE

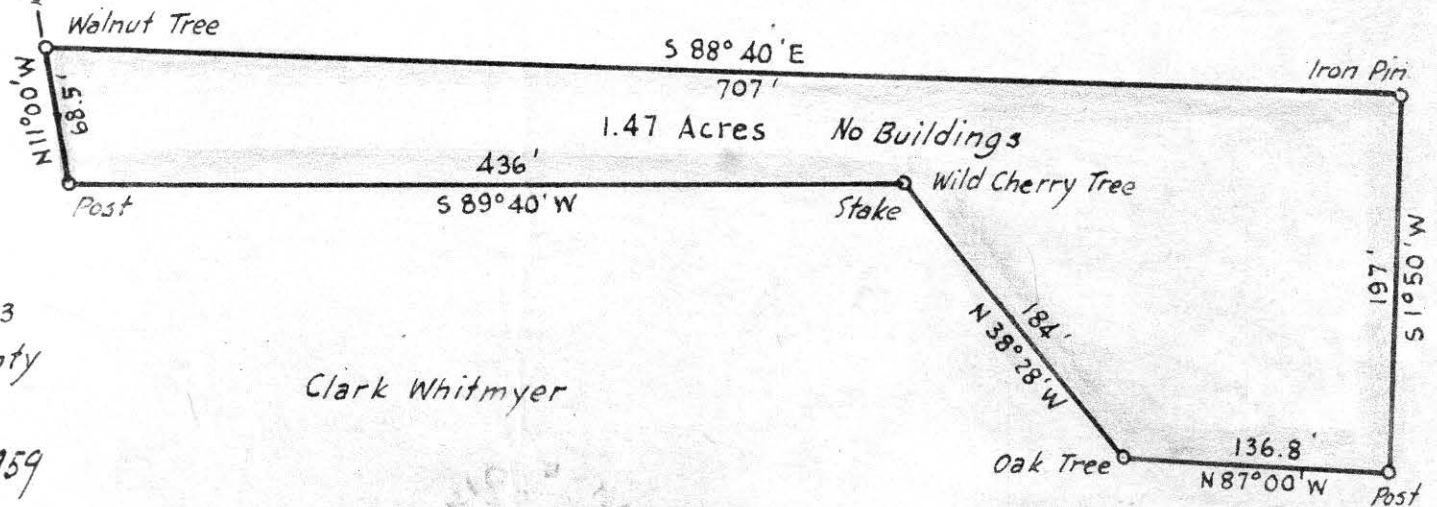
Section 18, Twp. 13, Range 13  
Prairie Township Holmes County  
Ohio

Scale 1" = 100 ft.

May 1959

Drawn from  
a survey by

William Sellner  
Reg. Sur. No. 3915



Clark Whitmyer

