

56747

RECT: May 11, 1959
AT 1:30 O'CLOCK P.M.
RECORDED: May 13, 1959
HOLMES CO. PLAT VOL. 3 PG. 53
FEE: \$1.76
Evelyn Anderson RECORDER



MAP
SHOWING DIVISION
OF THE

RALPH & ATLEE HOSTETTLER
PROPERTY

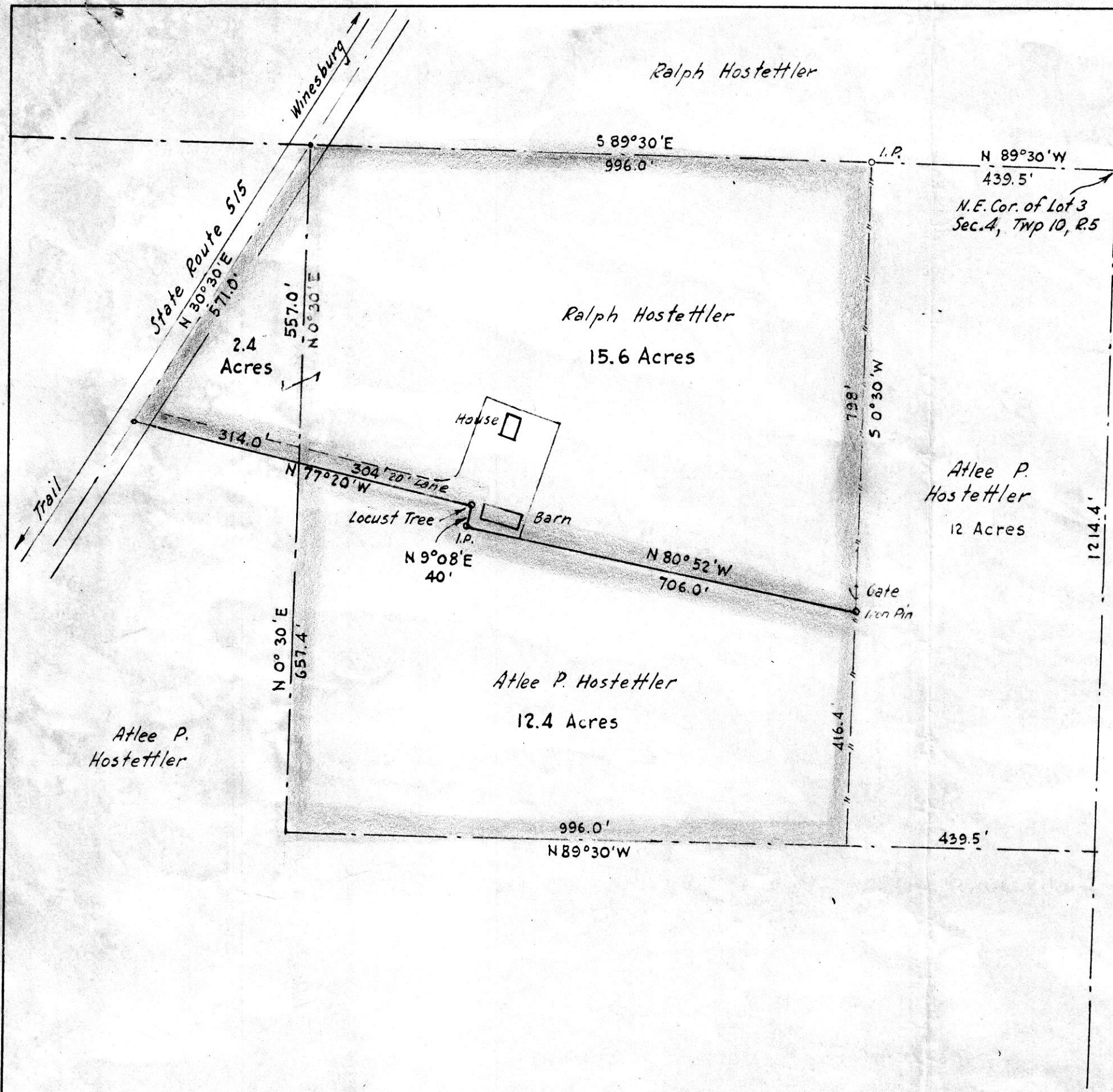
Lot No. 3, Section 4, Twp. 10, Range 5
Paint Township, Holmes County
Ohio

Scale 1" = 200 ft.

Feb. 1959

Drawn from
a survey by

William Selmer
Reg. Sur. No. 3715



Ralph Hostettler

Ralph Hostettler
15.6 Acres

Atlee P.
Hostettler
12 Acres

Atlee P. Hostettler
12.4 Acres

Atlee P.
Hostettler

N 89°30'W
439.5'
N.E. Cor. of Lot 3
Sec. 4, Twp 10, R. 5

1214.4'

416.4'

S 89°30'E
996.0'

N 89°30'W
996.0'

439.5'

N 0°30'E
657.4'

N 0°30'E
557.0'

State Route 515
N 30°30'E
571.0'

2.4
Acres

N 77°20'W
314.0'

N 9°08'E
40'

N 80°52'W
706.0'

S 0°30'W
798'

Winesburg

Trail