



MAP
SHOWING LOCATION
OF A
PARCEL OF LAND
DEEDED TO
ROBERT DIDINER
BY
W.O. STARNER

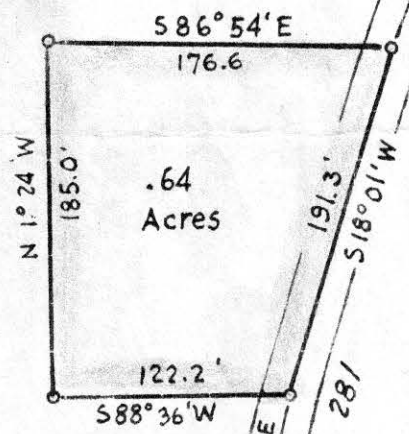
Lot 15, 4th Qr., Twp. 9, Range 9.
Knox Township, Holmes County
Ohio

Scale 1" = 100 ft March 1959

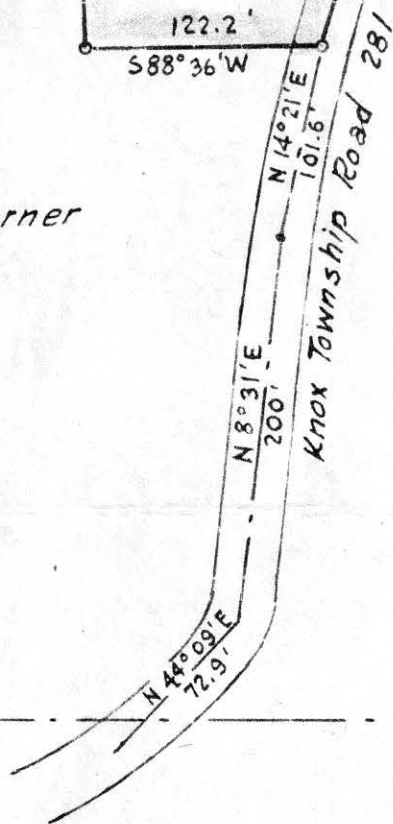
Drawn from a
survey by

William Sellner
Reg. Sur. No. 3915

W.O. Starner



W. O. Starner



W. O. Starner

S.E. Cor. of
Lot No. 16

N 88°30'W
928.2'

56760

REC'D: May 12 - 1959
AT 2:25 O'CLOCK P.M.,
RECORDED: May 13 - 1959
HOLMES CO. Vol. 3 PG. 52

FEE: \$ 1.00

Evay Anderson RECORDER

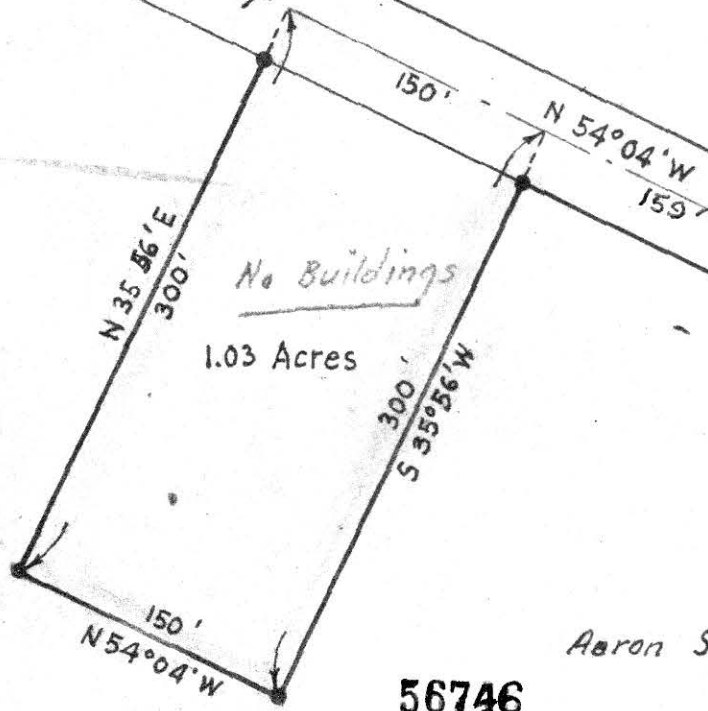




Aaron Steele

State Route 39

Roadside Park



Millersburg

MAP
SHOWING LOCATION
OF A PARCEL OF LAND
DEED BY
AARON A. & ESTHER STEELE
TO
NORMAN KLOTZ
IN

Lot 25, Section 1, Twp. 9, Range 8
Monroe Township, Holmes County
Ohio

Scale 1"=100ft

May 1959

Drawn from
a survey by

William Sellner
Reg. Sur. No. 3915

56746

Aaron Steele

453
N 4° 30' E

REC'D: May 11-1959
AT 11:30 O'CLOCK A.M.
RECORDED: May 11-1959
HOLMES CO. Vol 3 PG. 52
FEE: \$1.00

Cecilia Anderson RECORDER

S.E. Cor. of
Lot No. 25

56761

RECD: May 12-1959

AT 2:25 O'CLOCK P.M.

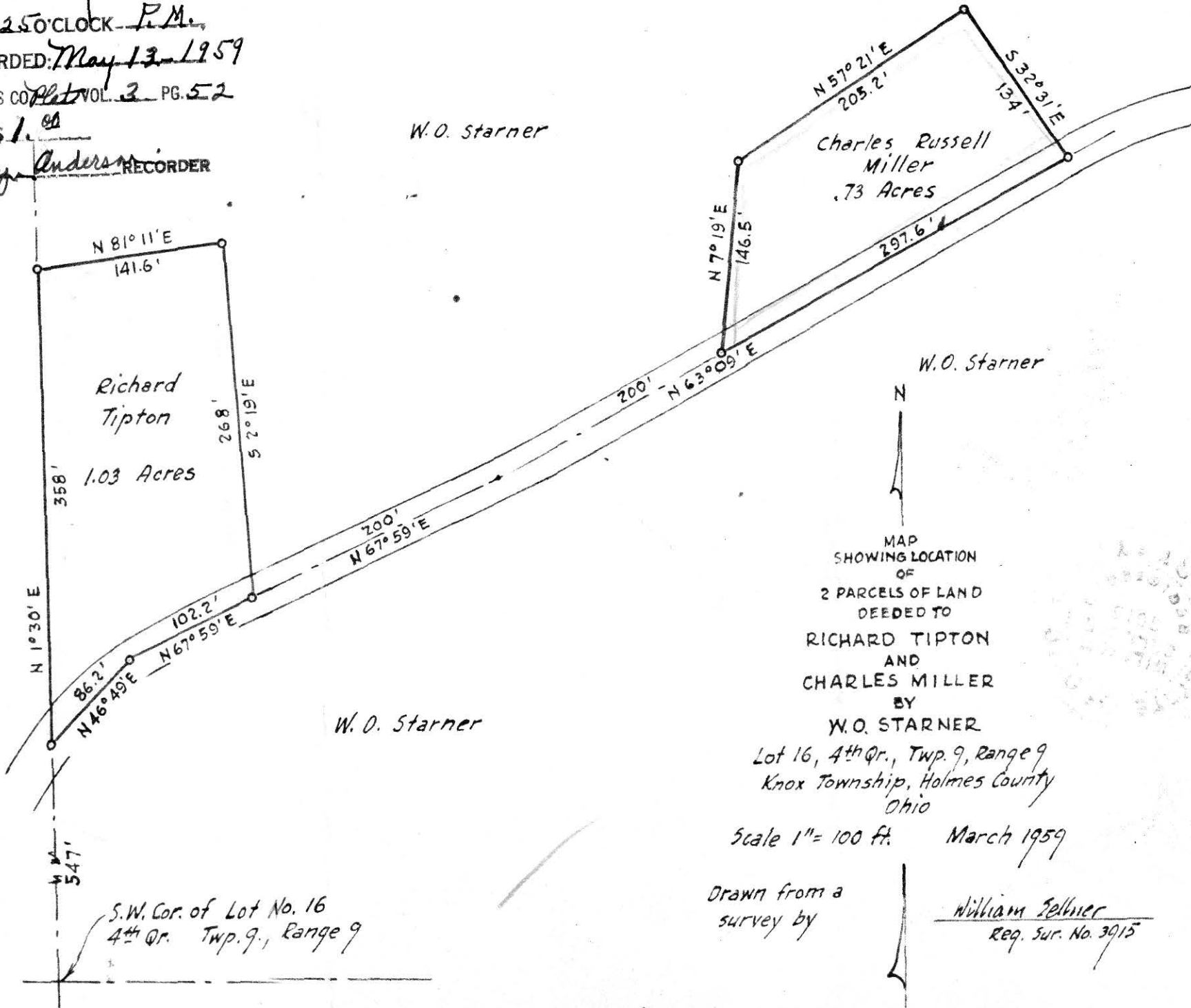
RECORDED: May 13-1959

HOLMES CO Plat VOL. 3 PG. 52

FEE: \$1.00

Evelyn Anderson RECORDER

W.O. Starner



Richard Tipton
1.03 Acres

Charles Russell Miller
.73 Acres

W.O. Starner

N

MAP
SHOWING LOCATION
OF
2 PARCELS OF LAND
DEEDED TO
RICHARD TIPTON
AND
CHARLES MILLER
BY
W.O. STARNER

Lot 16, 4th Qr., Twp. 9, Range 9
Knox Township, Holmes County
Ohio

Scale 1" = 100 ft. March 1959

Drawn from a
survey by

William Selmer
Reg. Sur. No. 3915

S.W. Cor. of Lot No. 16
4th Qr. Twp. 9, Range 9

W.O. Starner