

MAP  
SHOWING LOCATION  
OF A PARCEL OF LAND  
DEEDED BY  
MARY B. MILLER  
TO  
NOAH B. MILLER

Lot No. 1, 4<sup>th</sup> Qr., Twp. 10, Range 5  
Paint Township, Holmes County  
Ohio

Scale 1" = 100 ft. April, 1959

Drawn from  
a survey by

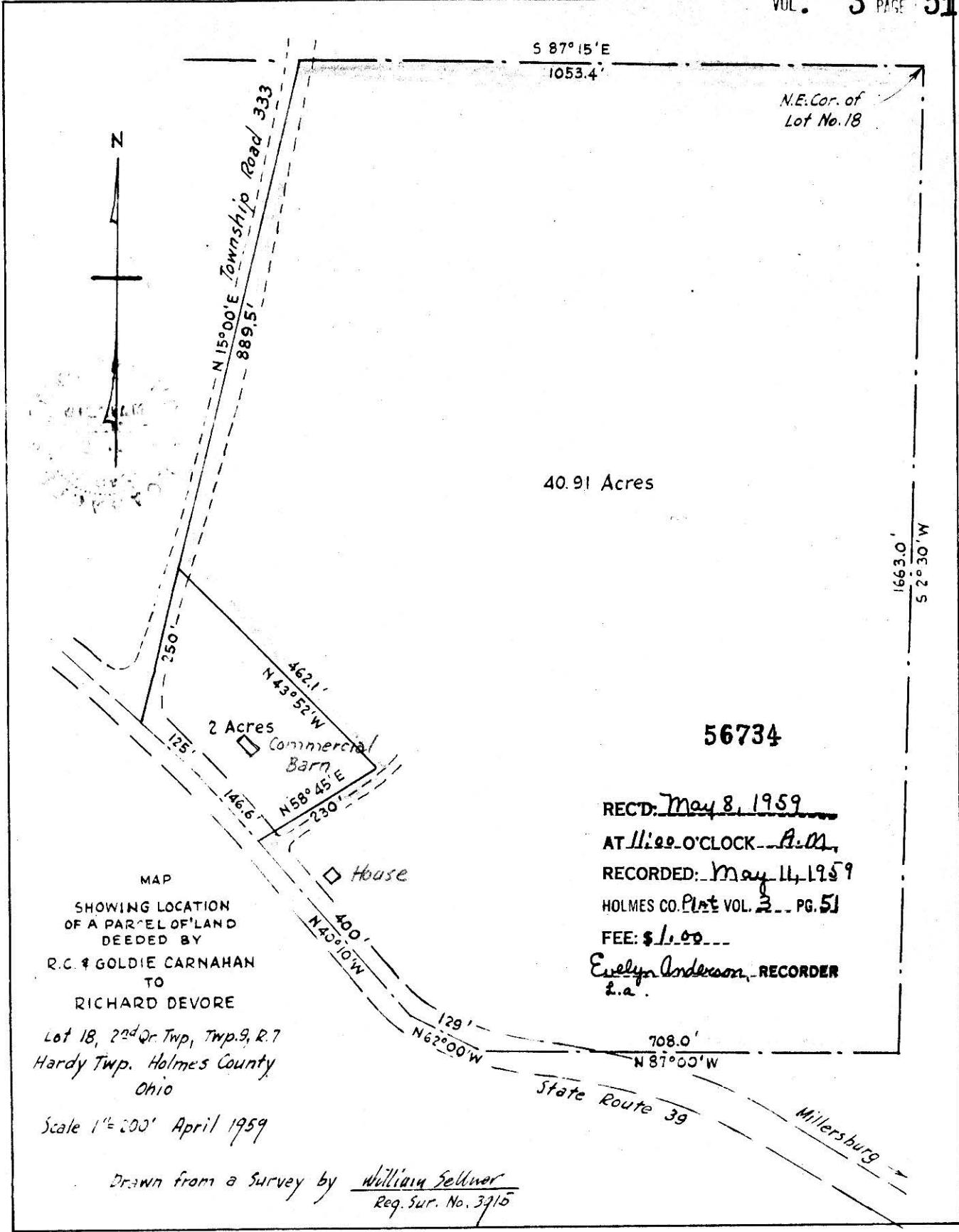
William Sellner  
Reg. Sur. No. 3915



56691

REC'D: May 2-1959  
AT 9:55 O'CLOCK A.M.  
RECORDED: May 4-1959  
HOLMES CO. Ret VOL. 3 PG. 51  
FEE: \$ 1.00

Evelyn Anderson  RECORDER



MAP  
SHOWING LOCATION  
OF A PARCEL OF LAND  
DEEDED BY  
R.C. & GOLDIE CARNAHAN  
TO  
RICHARD DEVORE  
Lot 18, 2<sup>nd</sup> Qr. Twp, Twp. 9, R. 7  
Hardy Twp. Holmes County  
Ohio

Scale 1" = 200' April 1959

Drawn from a Survey by William Sellner  
Reg. Sur. No. 3715

56734

RECD: May 8, 1959  
AT 11:00 O'CLOCK A.M.  
RECORDED: May 11, 1959  
HOLMES CO. Plat VOL. 2 PG. 51  
FEE: \$1.00  
Evelyn Anderson RECORDER  
i.a.