

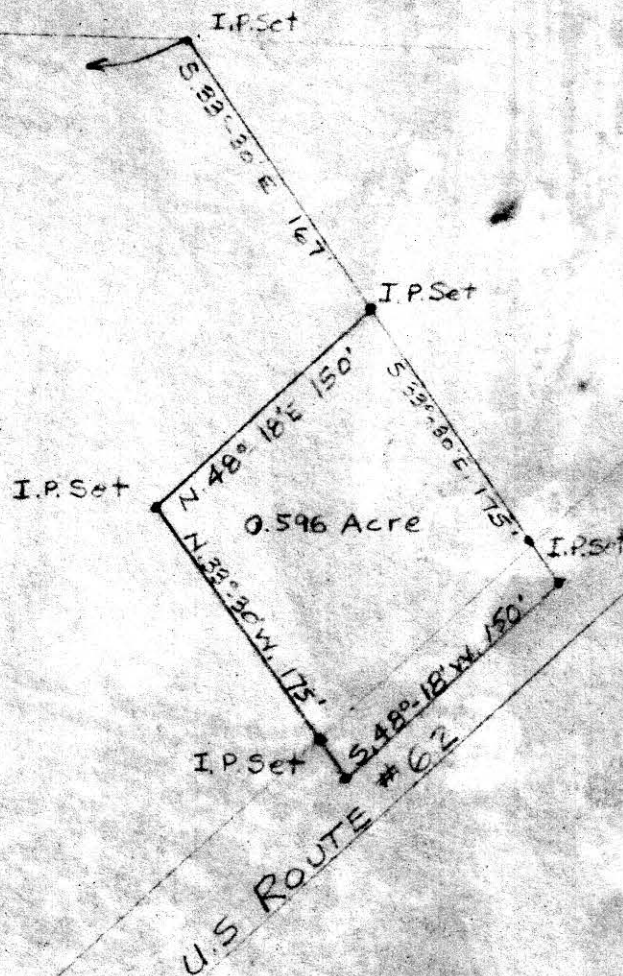
4TH QUARTER
T10, R4

N.W. CORNER
LOT 37

LOT 38 (MILITARY LANDS)

S. 87° 30' E 951.4 Feet

LOT 37 (MILITARY LANDS)
3RD QUARTER T10, R4



SURVEY OF PART OF MILITARY LOT
No. 37, 3RD QUARTER, TOWNSHIP 10, RANGE 4
PAINT TOWNSHIP, HOLMES COUNTY, OHIO
FOR OTTMER MISHLER
SURVEYED BY - R.C. SCHNEIDER #4177 AND
R.H. HUNSINGER #3685, REGISTERED SURVEYORS
SCALE 1"=100' DEC 27, 1958

56533

REC'D April 6-1959
AT 12 O'CLOCK P.M.
RECORDED: April 6-1959
HOLMES CO. VOL. 3 PG. 48
FEE: \$ 1.00
Ernest Anderson RECORDER



#56558

REC'D: April 9, 1959

AT 3:40 O'CLOCK P.M.

RECORDED: April 10, 1959

HOLMES CO. Plat VOL. 3 PG. 48

FEE: \$ 1.00

Evelyn Anderson RECORDER
V.L.

Nashville
Road

Iron
Pin

GARLAND ST. 40 FT.

N 73° 25' E
355'

152'
51° 30' W

MONROE ST. 40 FT.

.73 Acres
J. W. Shinabarker

N 88° 30' W
295'

Iron
Pin

MAP
10' ALLEY SHOWING LOCATION
OF

A. F. STROUSE
AND
J. W. SHINABARKER
PROPERTIES

Village of Glenmont
Section 1, Twp. 8, Range 9
Richland Township
Holmes County
Ohio

55'
N 40° 51' W
Block

Creek
136.5'
S 24° 25' E

.76 Acres
A. F. Strouse

122'
125'
N 1° 30' E

Scale 1" = 50 ft.

Mar. 1959

237.0'
S 88° 30' E

Iron
Pin

Drawn from a
survey by

MAIN ST. 60 FT.
State Route 520

William Fellner
Reg. Sur. No. 3915