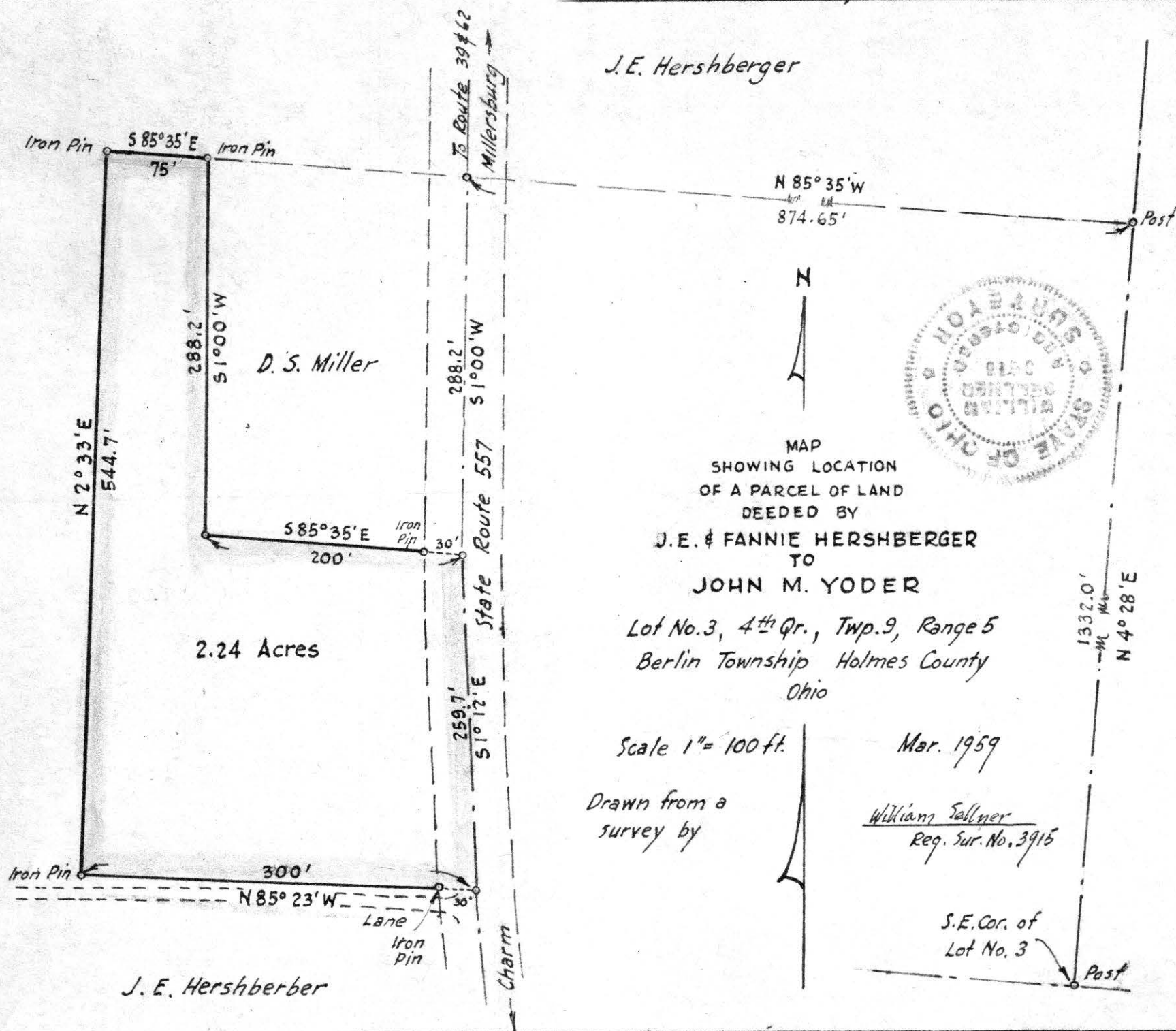


J. E. Hershberger



56507

REC'D: April 2-1959

AT 1:30 O'CLOCK P.M.

RECORDED: April 3-1959

HOLMES CO. Vol. 3 PG. 47

FEE: \$ 1.00

Erley Anderson RECORDER

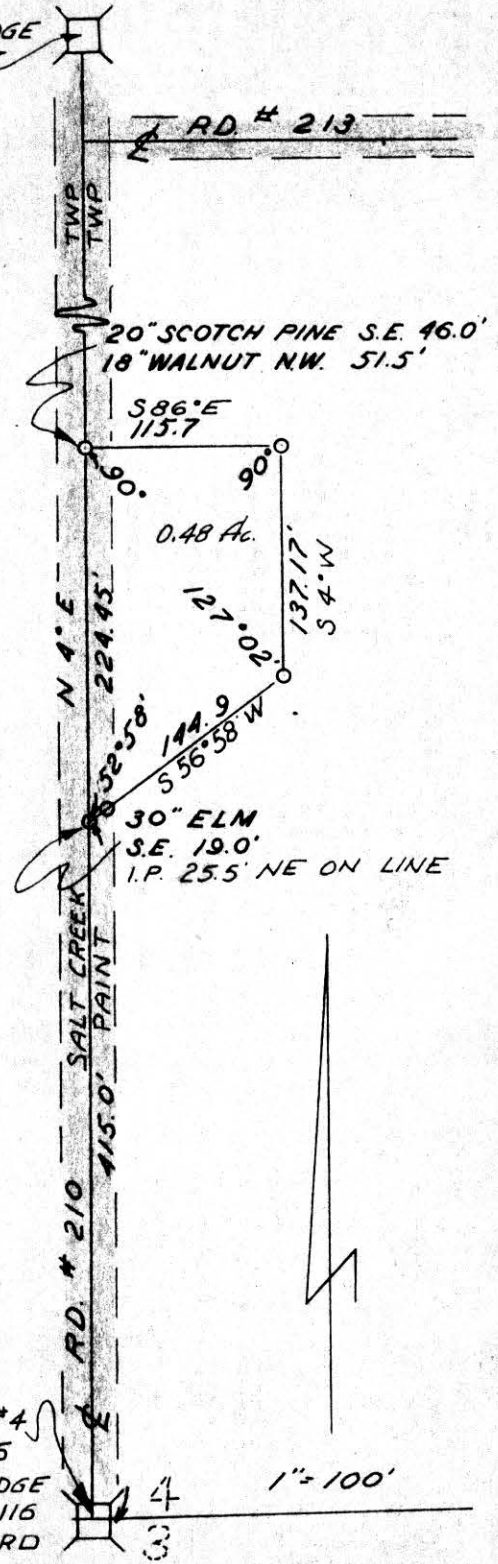
DEED VOL. 147 PAGE 395

USED CENTER OF BRIDGE
 FOR LINE.

I certify this survey to be correct to the best of
 my knowledge.

Completed December 1958

Ray W Gasbarre
 RAY W GASBARRE REG SUR #4153
 ENGINEERING ASSOCIATES
 PO BOX 157
 WOOSTER, OHIO



56521

REC'D: *April 4-1959*
 AT *9:45* O'CLOCK *Mo.*
 RECORDED: *Apr. 6, 1959*
 HOLMES CO. *Vol. 3* PG *47*
 FEE: *\$10.00*

Ernest Anderson
 RECORDER

SW. COR. LOT #4
 SEC 3; T-10; R-5
 CENTER OF BRIDGE
 SEE VOL 4 PG 116
 SURVEY RECORD

1" = 100'