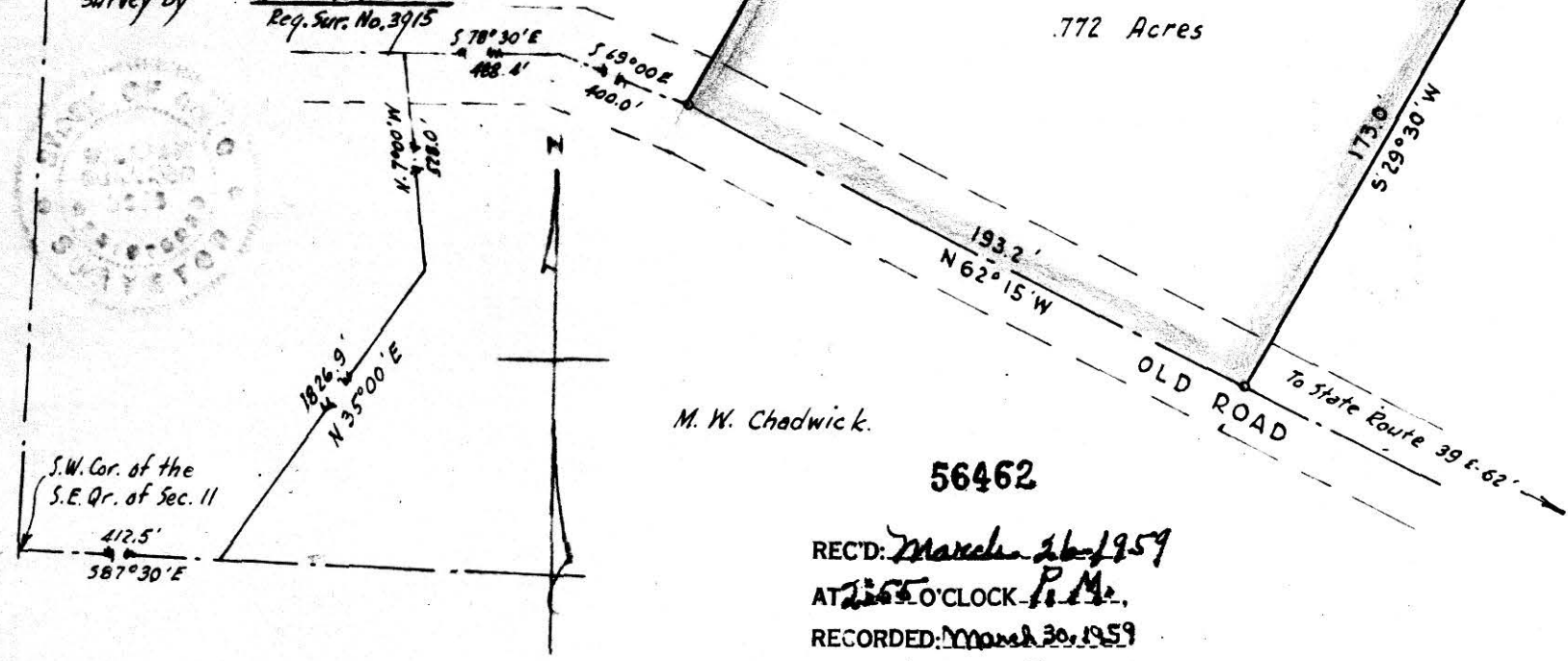
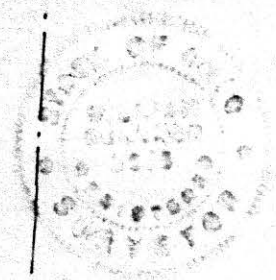


MAP  
 SHOWING LOCATION  
 OF A  
 PARCEL OF LAND  
 DEEDED BY  
 NOAH D. & MERVANNA MILLER  
 TO  
 S. N. McIntosh

**M+S ENTERPRISES UNLIMITED, INC.**  
 Section 11, Township 9, Range 7  
 Hardy Township, Holmes County  
 Ohio

Scale 1" = 50 ft.  
 Dec. 1957  
 Drawn from a  
 survey by William Sellner  
 Req. Sur. No. 3915



M. W. Chadwick.

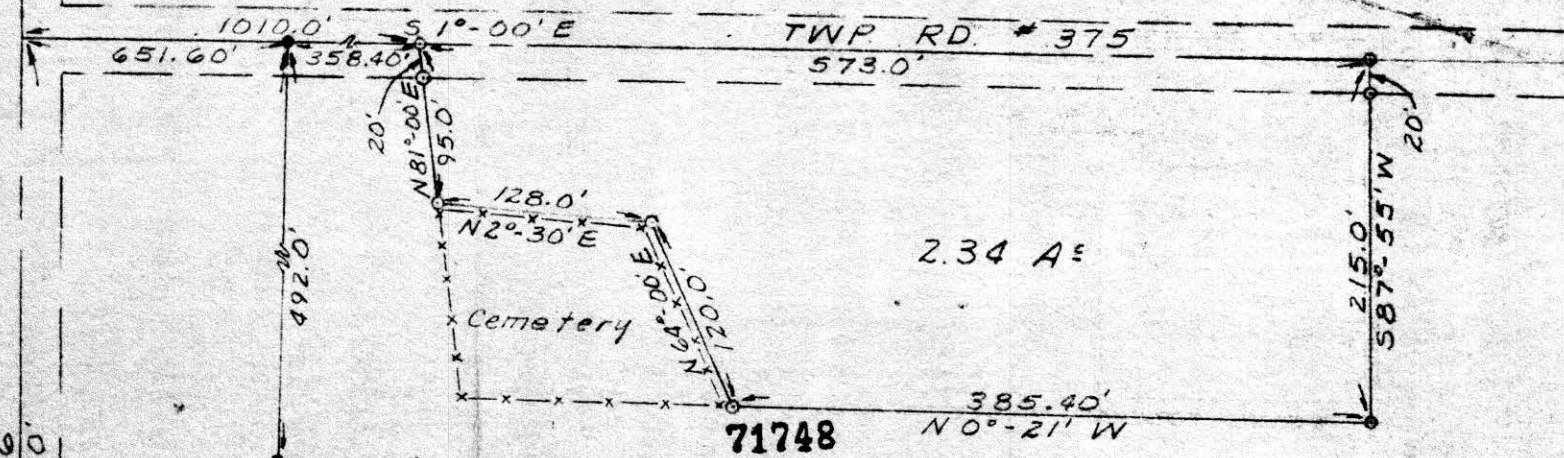
56462

REC'D: March 26, 1959  
 AT 2:55 O'CLOCK P.M.  
 RECORDED: March 30, 1959  
 HOLMES CODE Vol. 3 PG. 46  
 FEE: \$1.00  
Ernest Anderson RECORDER

Wayne Co.

S. R. # 226  
1374.60'

Holmes Co.



REC'D: January 4, 1962  
 AT: 1:10 O'CLOCK P.M.  
 RECORDED: January 5, 1962  
 HOLMES CO. Plat VOL. 3 PG. 46  
 FEE: \$1.00  
*Earl R. Johnston* RECORDER



Scale: 1" = 100'

- I. P. Set
- I. P. Found

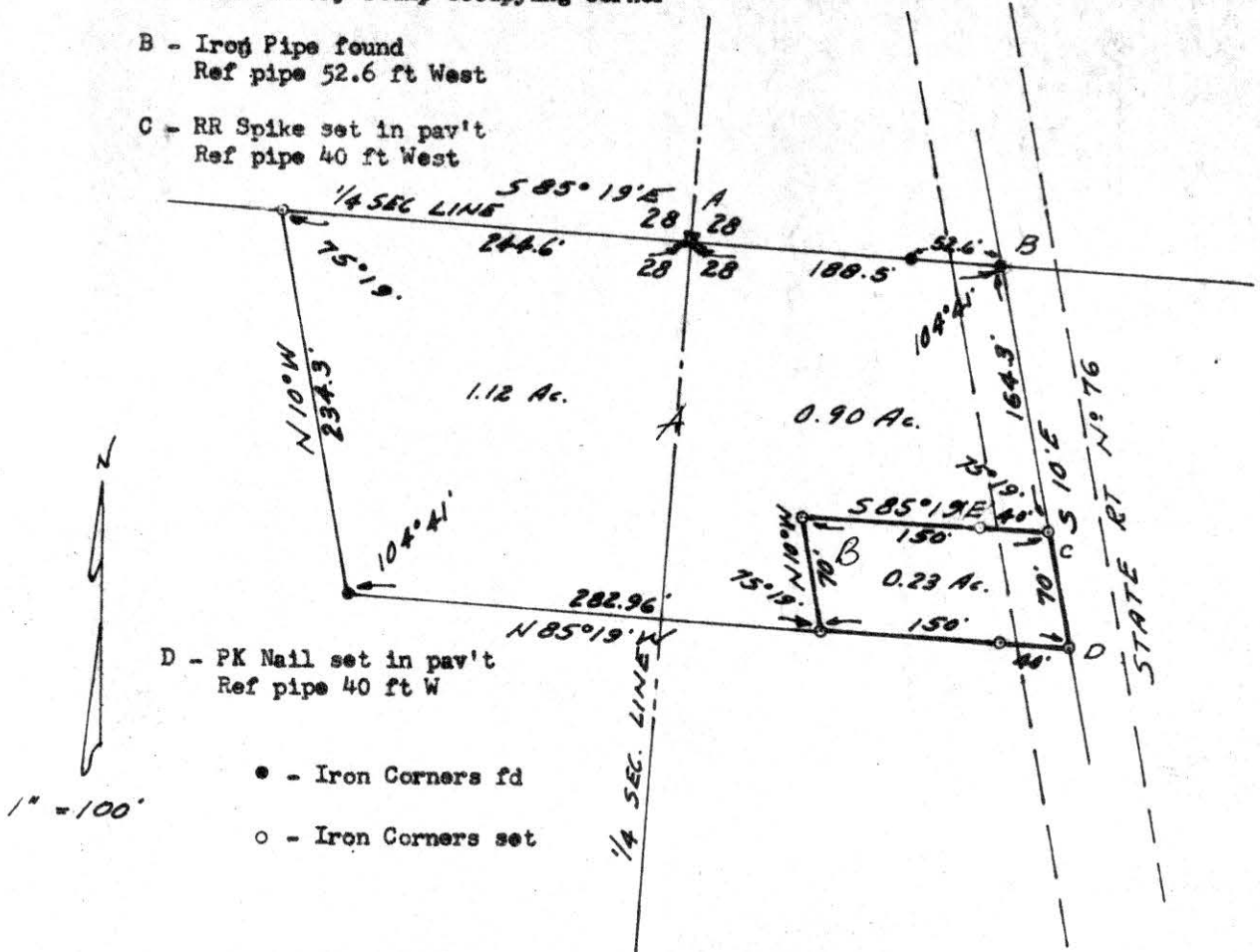
SW-1176  
 SHAPPER, PARRETT & ASSOCIATES  
 Mansfield Ohio Wooster

I hereby certify this plat to be a correct return of field notes of a survey for Gellman Schmid, in the Northeast Quarter Section 29, T-18, R-14, Ripley Township, Holmes County, Ohio, made December 6, 1961.

N.W. Cor., N.E. Qr.  
 Sec. 29, R-14, T-18,  
 Ripley Twp, Holmes Co.  
 1100.0'  
 Qr. Sec. Line

*E. R. Johnston*  
 E. R. Johnston R. S. 3828

- A - Center Section 28  
Wild cherry stump occupying corner
- B - Iron Pipe found  
Ref pipe 52.6 ft West
- C - RR Spike set in pav't  
Ref pipe 40 ft West
- D - PK Nail set in pav't  
Ref pipe 40 ft W



I certify this survey to be correct to the best of my knowledge.

Completed March 1959  
56492

*Ray W. Gasbarre*  
Ray W. Gasbarre Reg Sur #4153  
ENGINEERING ASSOCIATES  
PO BOX 157  
WOOSTER, OHIO

REC'D: *March 31-1959*  
AT *9:55* O'CLOCK *A.M.*  
RECORDED: *April 1st-1959*  
HOLMES CO. *Vol. 3* PG. *46*  
FEE: \$ *1.00*

*Evelyn Anderson* RECORDER