

56251

RECD: Feb. 24-1959

AT 2:10 O'CLOCK P.M.

RECORDED: Feb. 24-1959

HOLMES CO. VOL. 3 PG. 40

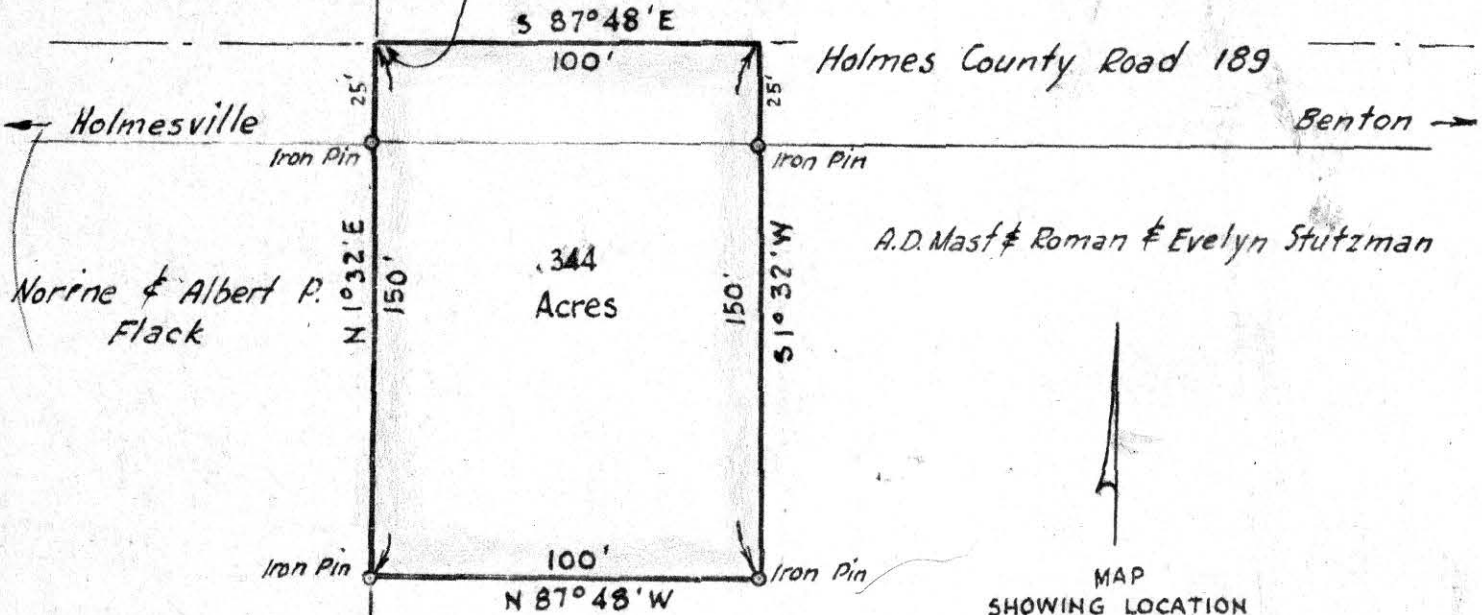
FEES: \$1.00

*Evelyn Anderson* RECORDER

Arthur E. Parrott

N.W. Cor. of the  
south one half  
of the S.W. Qr. of Sec. 2, Twp. 13, R. 13

Holmesville  
East Corp. Line



Norine & Albert P. Flack

A.D. Mast & Roman & Evelyn Stutzman

A.D. Mast &  
Roman & Evelyn  
Stutzman

MAP  
SHOWING LOCATION  
OF A PARCEL OF LAND  
ON THE

MAST-STUTZMAN FARM  
Section 2, Township 13, Range 13  
Prairie Township, Holmes County  
Ohio

Scale 1" = 50 ft.

May 23, 1958

Drawn from a  
survey by

*William Sellner*  
Reg. Sur. No. 3915



West Line of Section 2

56276

REC'D: Feb. 27-1959

AT 2:50 O'CLOCK P.M.

RECORDED: Feb. 28-1959

HOLMES CO. ~~PLAT~~ VOL. 3 PG. 40

FEE: \$1.<sup>00</sup>

*W. Selner* RECORDER

MAP  
SHOWING LOCATION  
OF A PARCEL OF LAND  
DEEDED BY  
NELLIE JARVIS  
TO  
WAYNE J. HERSHBERGER  
BEING PARTS OF  
LOTS 129, 130, AND 222  
Village of Millersburg  
Holmes County  
Ohio

Scale 1" = 50 ft.

Feb. 1959

Drawn from a  
survey by

*William Selner*  
Reg. Sur. No. 3915

