

#58935

REC'D: June 30, 1960

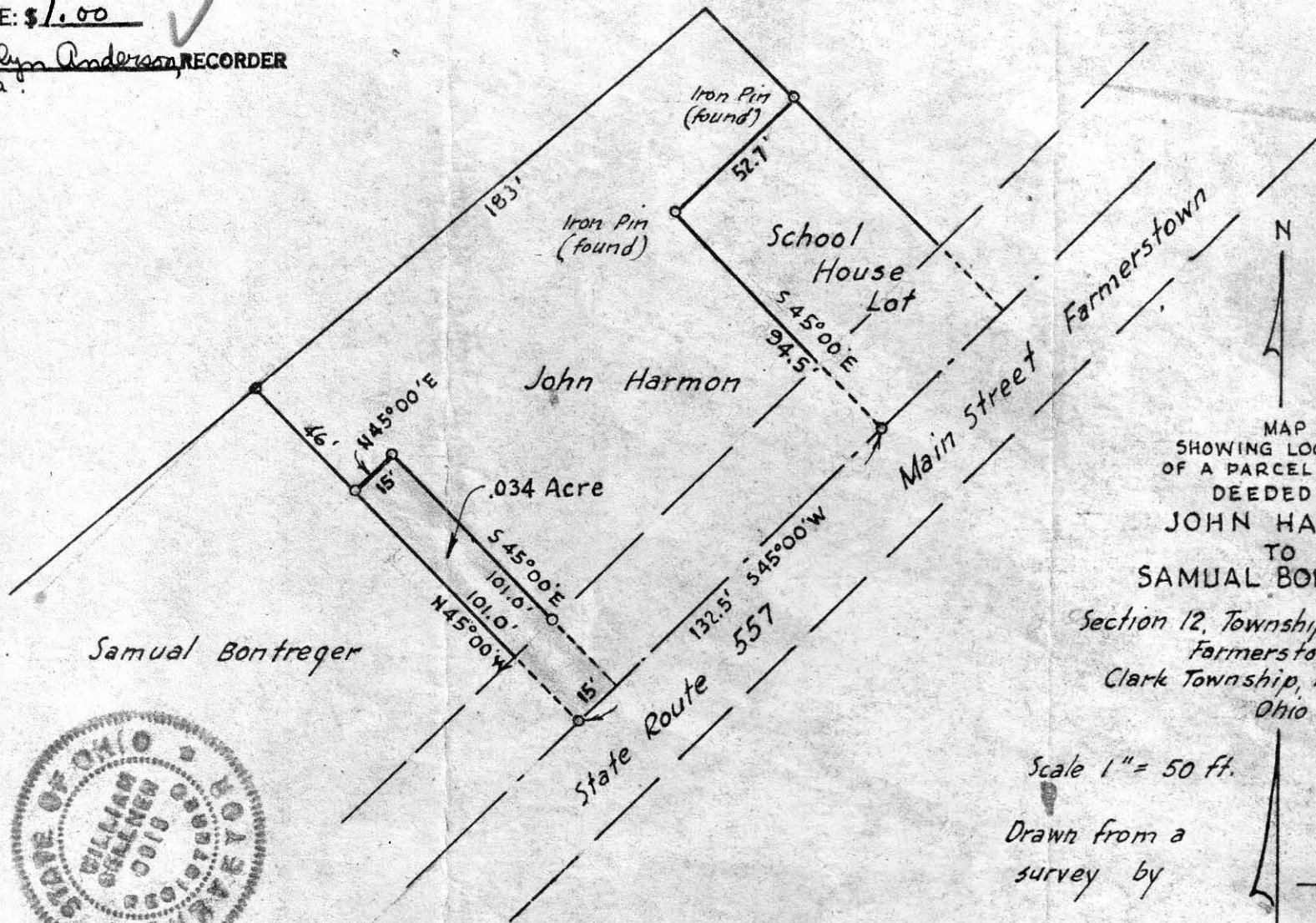
AT 8:35.0 CLOCK A.M.

RECORDED: June 30, 1960

HOLMES CO. PLAT VOL 3 PG. 38

FEE: \$1.00

Evelyn Anderson RECORDER
S.A.



MAP
SHOWING LOCATION
OF A PARCEL OF LAND
DEEDED BY

JOHN HARMON

TO

SAMUAL BONTREGER

Section 12, Township 8, Range 5
Farmersstown
Clark Township, Holmes County
Ohio

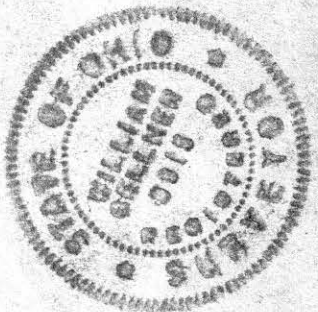
Scale 1" = 50 ft.

June 1960

Drawn from a
survey by

William Sellner

Reg. Sur. No. 3915



RECD: July 8-1960

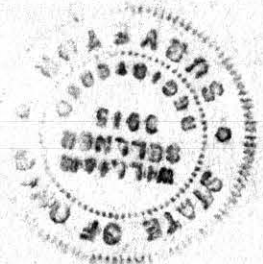
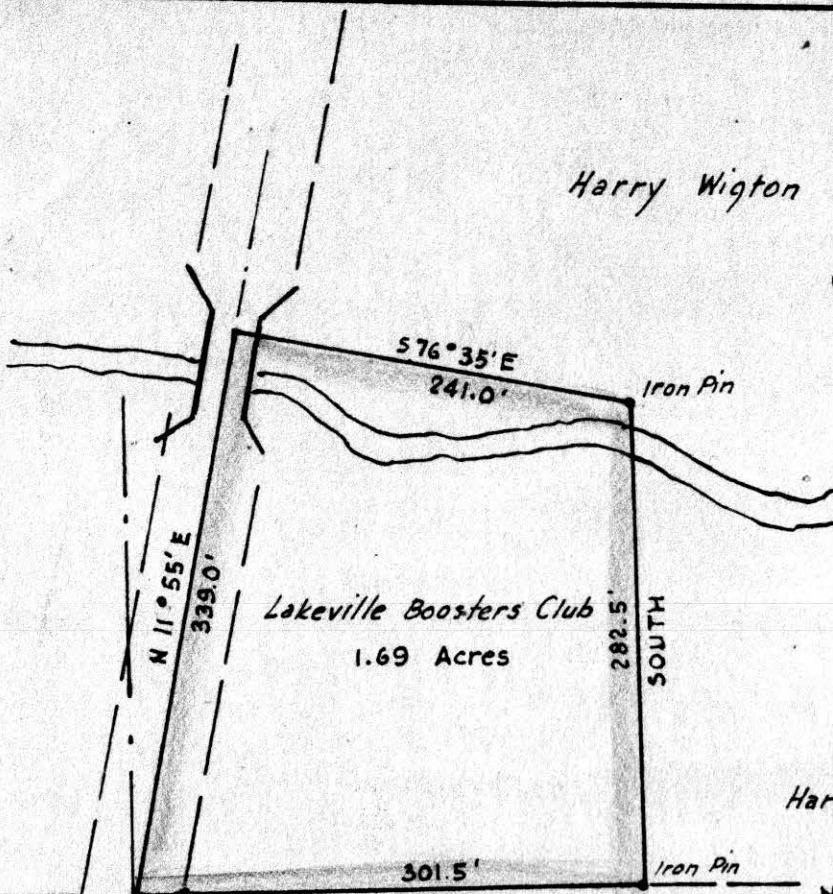
AT 2:40 O'CLOCK P. M.

RECORDED: July 12, 1960

HOLMES COUNTY VOL. 3 PG. 36

FEE: \$ 1.00

C. Evelyn Anderson RECORDER



MAP
SHOWING LOCATION
OF A PARCEL OF LAND
DEEDED BY
HARRY WIGTON
TO THE
LAKEVILLE BOOSTERS
CLUB
Section 26, Township 20, Range 15
Washington Township, Holmes County
Ohio

Scale 1" = 100 ft. May 1960

Drawn from a survey by

William Fellner
Reg. Sur. No. 3915

REC'D: July 8 - 1960

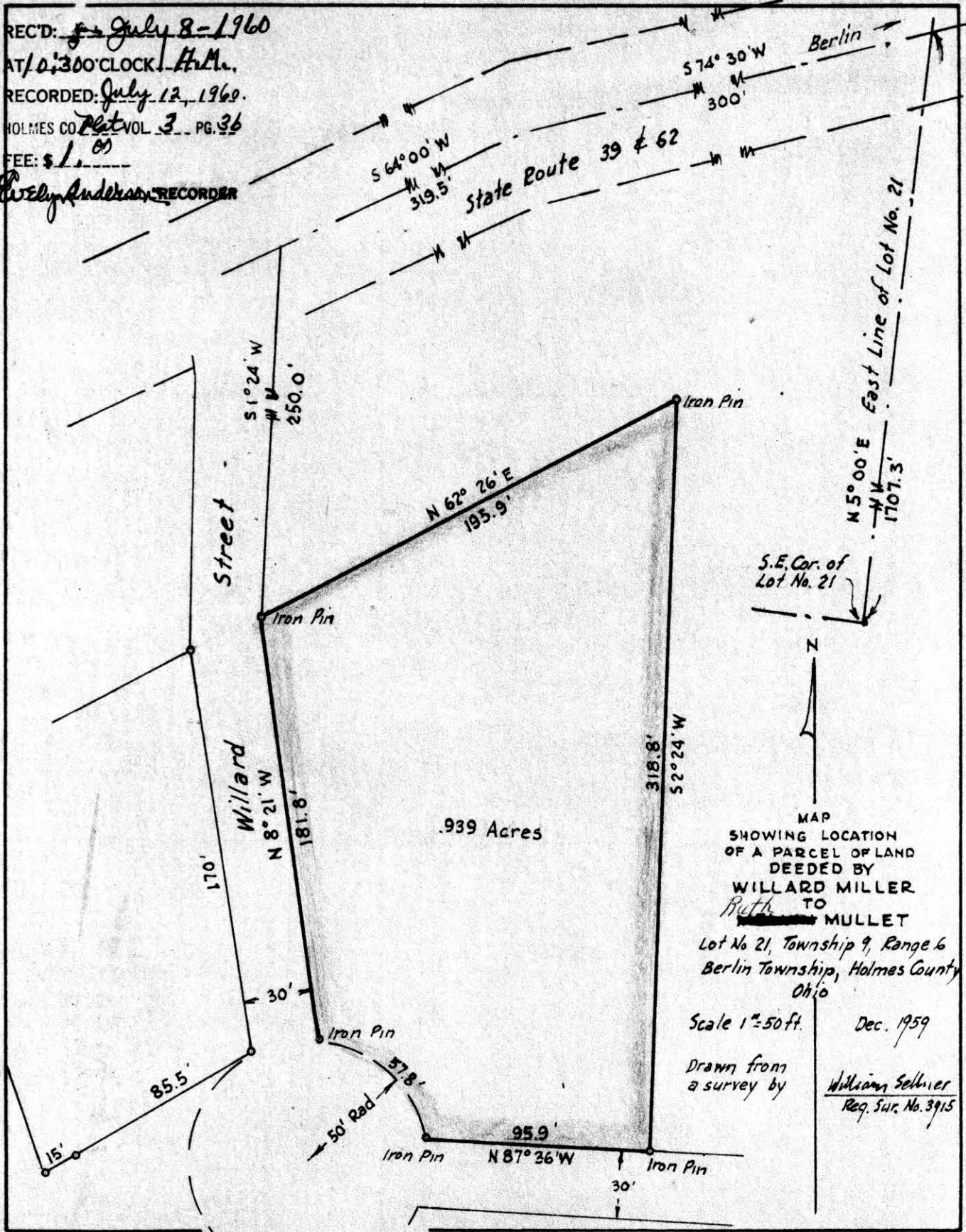
AT 10:30 O'CLOCK A.M.

RECORDED: July 12, 1960.

HOLMES CO. Plat VOL. 3 PG. 36

FEE: \$1.00

Wesley Anderson RECORDER



S.E. Cor. of Lot No. 21

N

MAP SHOWING LOCATION OF A PARCEL OF LAND DEEDED BY WILLARD MILLER TO *Ruth* TO MULLET

Lot No 21, Township 9, Range 6 Berlin Township, Holmes County, Ohio

Scale 1" = 50 ft.

Dec. 1959

Drawn from a survey by

William Selmer
Reg. Sur. No. 3915