

SURVEY FOR
D. J. HOFFMAN
PRAIRIE TWP
SW-680

SHAFFER-PARRETT & ASSOCIATES
CONSULTING ENGINEERS
WOOSTER, OHIO

55733

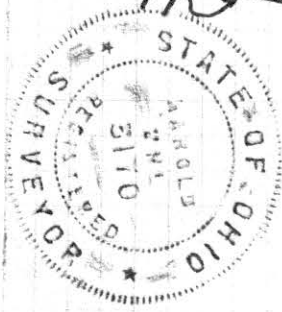
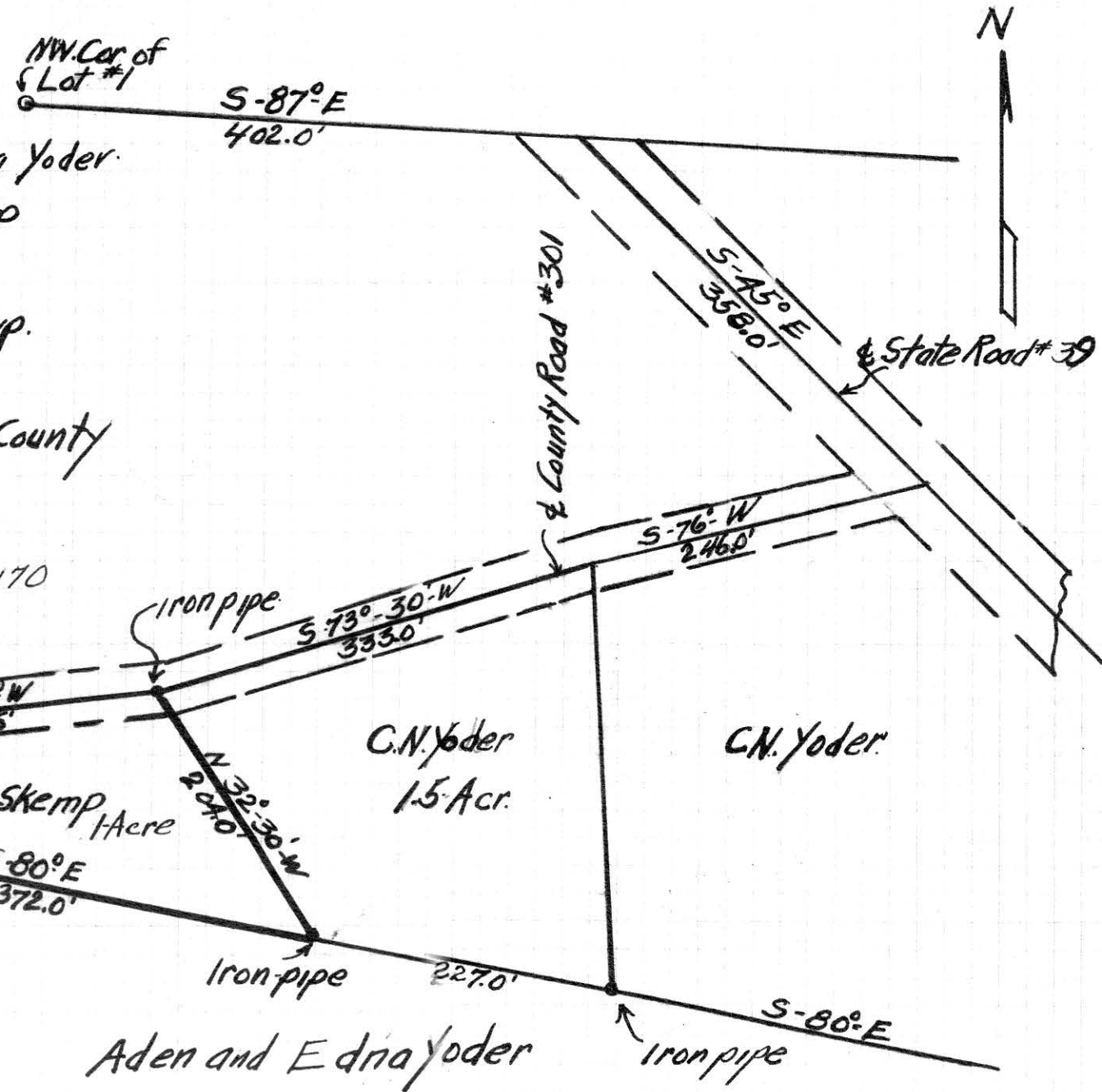
REC'D: December 6-1958
AT 10:50 CLOCK A.M.
RECORDED: Dec. 8, 1958
HOLMES CO. Vol. 3 PG. 37
FEE \$ 1.25
Erving Anderson ORDER

I HEREBY CERTIFY THIS PLAT TO BE A TRUE
RETURN OF FIELD NOTES OF A SURVEY
MADE IN THE SE QR SEC 33, PRAIRIE TWP,
HOLMES COUNTY, OHIO MAY 24, 1955.

C.B. Parrett
C.B. PARRETT R.S. 2871



Dec. 15, 1958
 From Aden and Edna Yoder.
 To
 Walter G. Skemp
 One Acre in
 Lot #1 of 3rd Q Twp.
 T-9-Range-7
 Hardy Twp. Holmes County
 Survey and Plat
 by
 Harold H. Yell
 Reg. Surveyor No. 3170
 Scale 1" = 100'



55869

RECD: Dec. 17-1958
 AT 2:45 O'CLOCK P.M.
 RECORDED: Dec. 18, 1958
 HOLMES COUNTY VOL. 3 PG. 37
 FEE: \$1.50
 Everly Anderson - RECORDER