

#55683

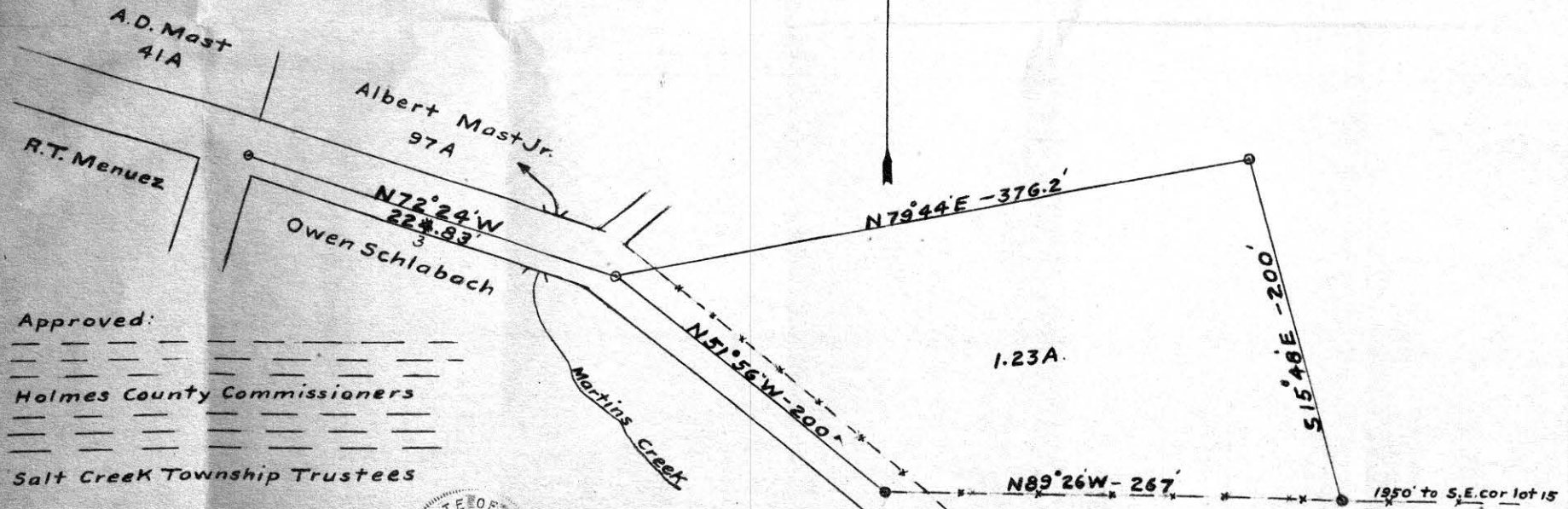
FOR ALBERT MAST JR. ET AL.  
OHIO, HOLMES COUNTY U.S.M.L.  
3RD QTR. SALT CREEK TWP. LOT 15.

SCALE 1" = 50 FEET.

JULY 29, 1958.

55683

REC'D: *November 25, 1958*  
AT 3:30 O'CLOCK P.M.  
RECORDED: *November 26, 1958*  
HOLMES CO. VOL. 3 PG. 35  
FEE: \$2.70  
*C. G. Anderson* RECORDER



Approved:  
\_\_\_\_\_  
Holmes County Commissioners  
\_\_\_\_\_  
Salt Creek Township Trustees



*Rolland L. Marx*

55677

REC'D: November 25, 1958

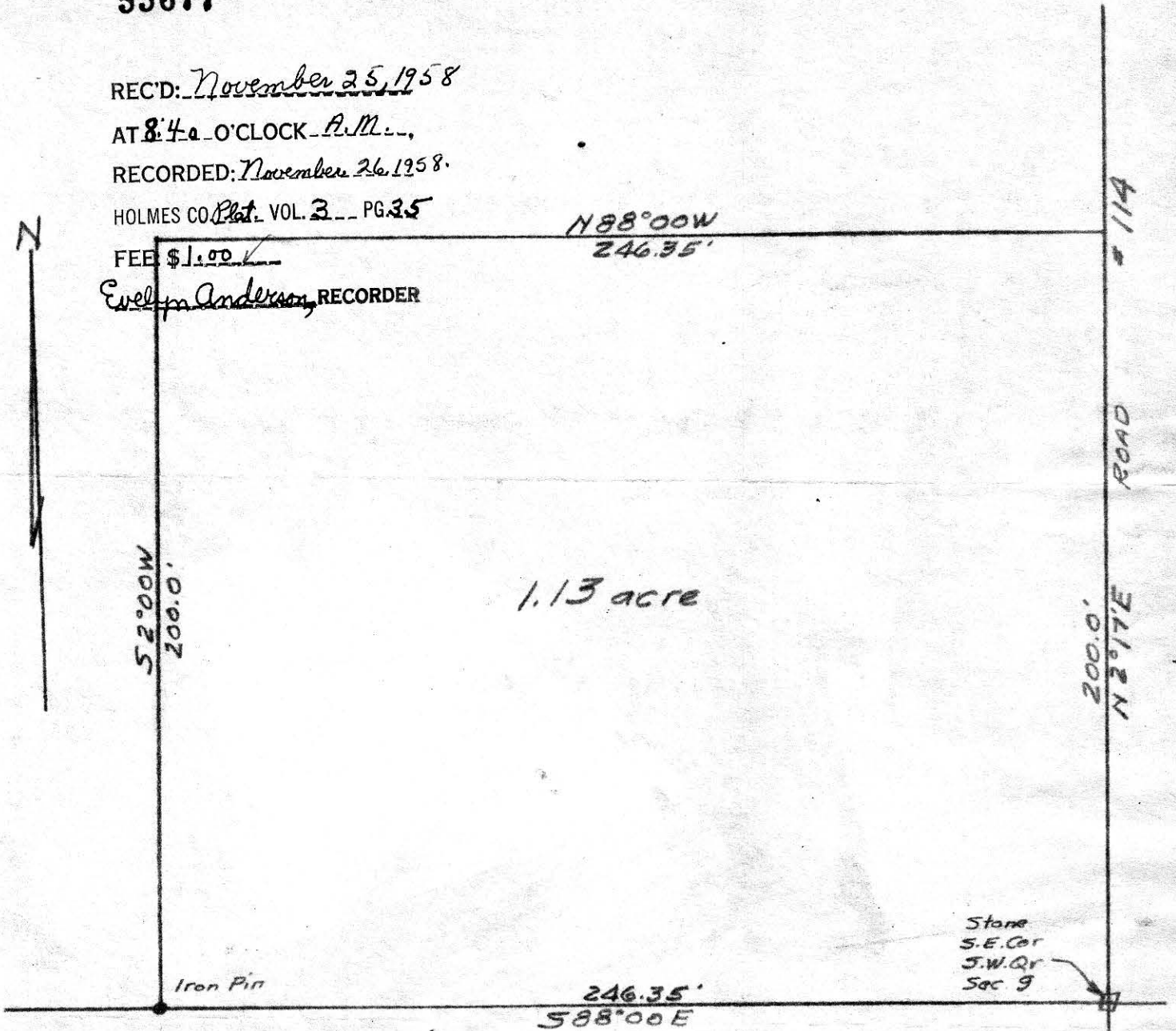
AT 8:40 O'CLOCK A.M.

RECORDED: November 26, 1958.

HOLMES CO. Plat VOL. 3 PG. 35

FEE \$ 1.00

Evelyn Anderson, RECORDER



I hereby certify that the above plat is a true and correct exhibit of the survey made by me of a 1.13 acre tract located in the southwest quarter of Section 9 in Township 8, Range 5 in Clark Township, Holmes County, Ohio.

Date of Survey October 31, 1958  
Scale: 1 inch equals 40 feet

*D.Y. Miskimen*  
 D.Y. Miskimen  
 Reg. Surveyor #14043  
 REGISTERED SURVEYOR