

Ida Rose

Holmes County Road 345

R. E. Morris

Floretta Martin

1.42 Acres

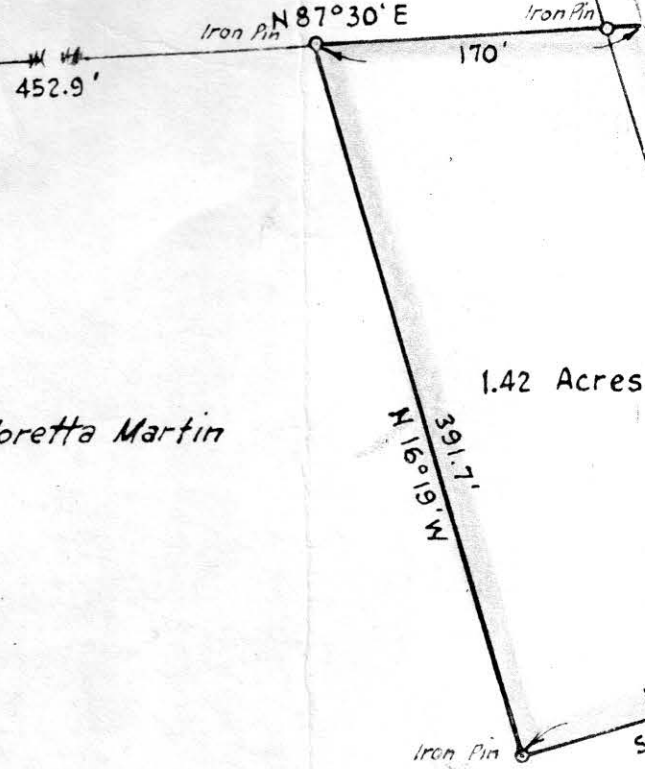
Holmes County Road 318

Floretta Martin

Frank Dye

S.W. Cor. of the
S.E. Qr. of Sec. 26, Twp. 18, Range 14

N 0° 45' E
1358.9'



MAP
SHOWING LOCATION
OF A PARCEL OF LAND
DEEDED BY
FLORETTA MARTIN
TO
RUSSELL W. & PAULINE M. MILLER
IN
Section 26, Township 18, Range 14
Ripley Township, Holmes County
Ohio

Scale 1" = 100 ft.

Sept, 1958

55386
RECD: October 11-1958
AT 11:35 O'CLOCK A.M.
RECORDED: October 13-1958
HOLMES CO. VOL. 3 PG. 31
FEE: \$ 1.00

Drawn from
a survey by

William Selmer
Reg. Sur. No. 3915

Wayne Anderson RECORDER

73099

REC'D: July 11, 1962
AT 8:55 O'CLOCK A.M.
RECORDED: July 11, 1962
HOLMES CO. PLAT VOL. 3 PG. 31
FEE: \$1.00
Evelyn Anderson RECORDER
P.A.

Paul R. Funk

Paul R. Funk

