

1 VOL

3 PAGE

2B

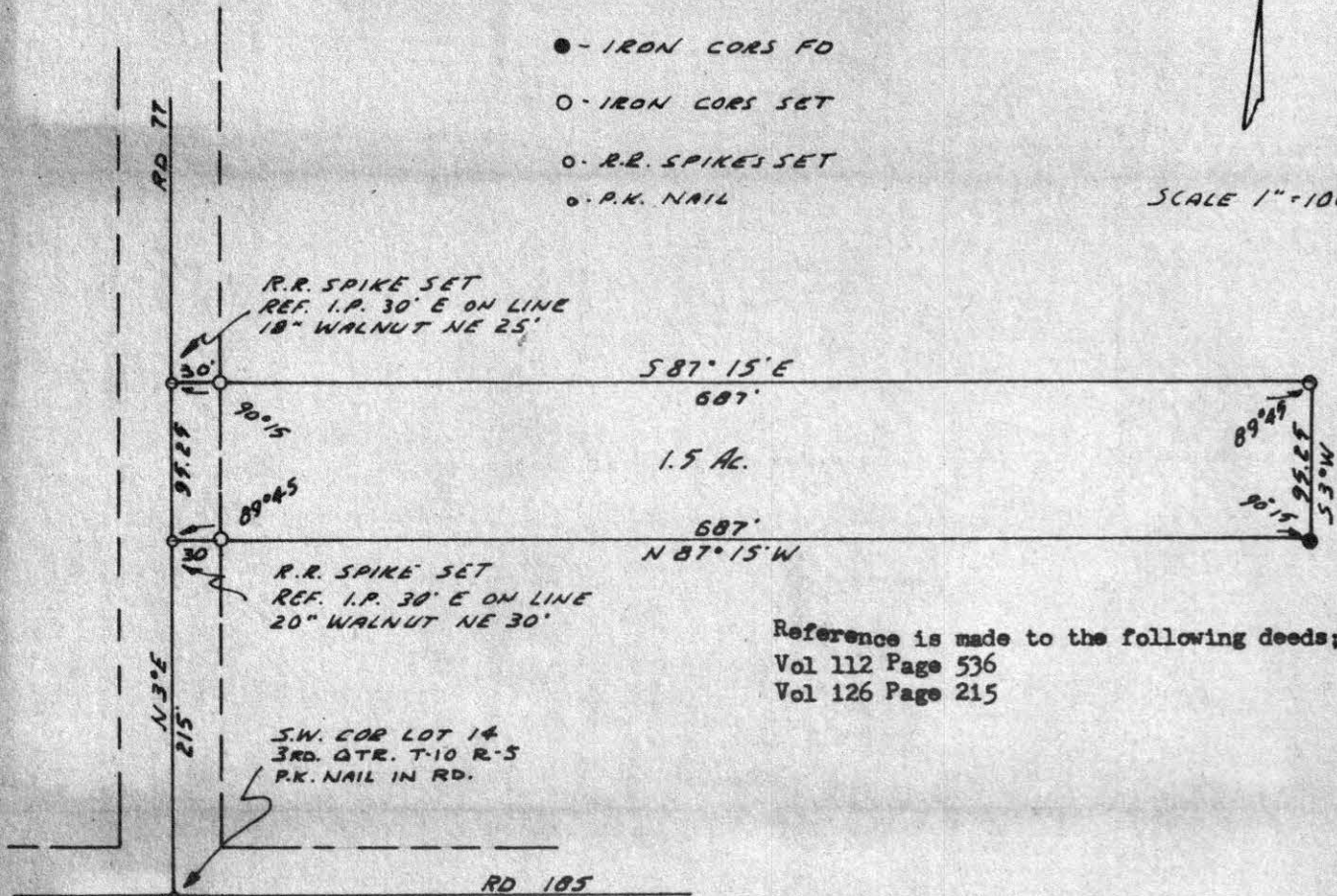
SALT CREEK TOWNSHIP
WEST PART LOT 14 3rd QUARTER
TWP 10 RANGE 5
HOLMES COUNTY, OHIO

made for
Mr Henry A Hersberger



- - IRON CORNERS
- - IRON CORNERS SET
- - R.R. SPIKES SET
- - P.K. NAIL

SCALE 1" = 100'



Reference is made to the following deeds;
Vol 112 Page 536
Vol 126 Page 215

I certify this survey to be correct to the best of my knowledge.
Completed May 1960

58849

Ray W. Gasbarre
 Ray W. Gasbarre Reg Sur #4153
 ENGINEERING ASSOCIATES
 PO BOX 157
 WOOSTER, OHIO

RECD: June 13-1960

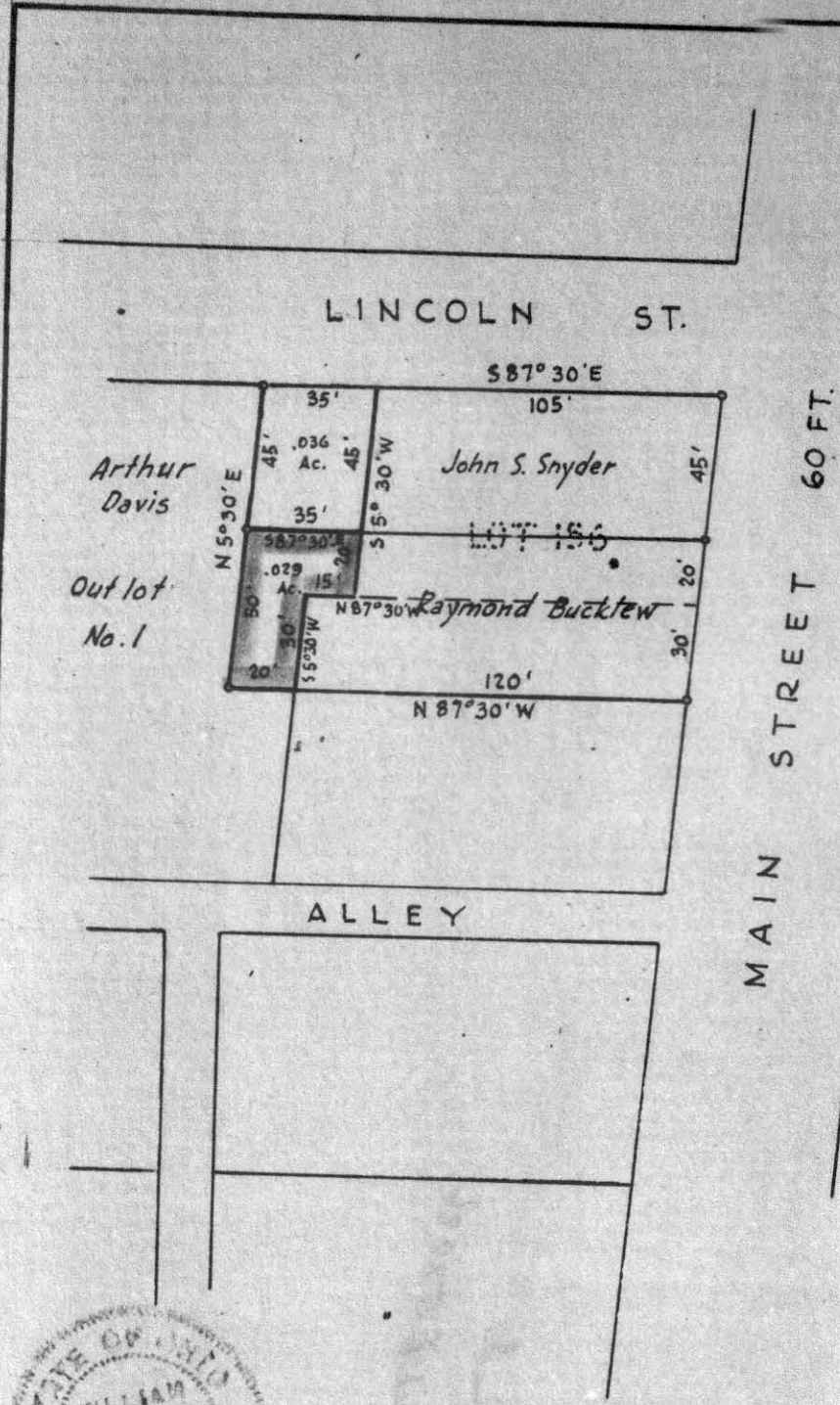
AT 2:45 O'CLOCK P.M.

RECORDED: June 15, 1960

HOLMES CO. VOL. 3 PG. 2-B

FEE: \$1.00

Carly Anderson RECORDER



58887

REC'D: June 20-1960
 AT 3:45 O'CLOCK P.M.
 RECORDED: June 22-1960
 HOLMES COUNTY VOL. 3 PG. 2B
 FEE: \$1.00
Ernst Anderson RECORDER

MAP
 SHOWING LOCATION
 OF TWO PARCELS OF
 OUTLOT NO. 1
 IN THE
 Village of Killbuck
 Holmes County
 Ohio

DEEDED BY
 ARTHUR F. DAVIS
 TO
 JOHN S. SNYDER
 AND
 RAYMOND BUCKLEW



Drawn from a survey by William Sellner
 Reg. Sur. No. 3915

Scale 1" = 50 ft. June 1960

REC'D: July 7-1960

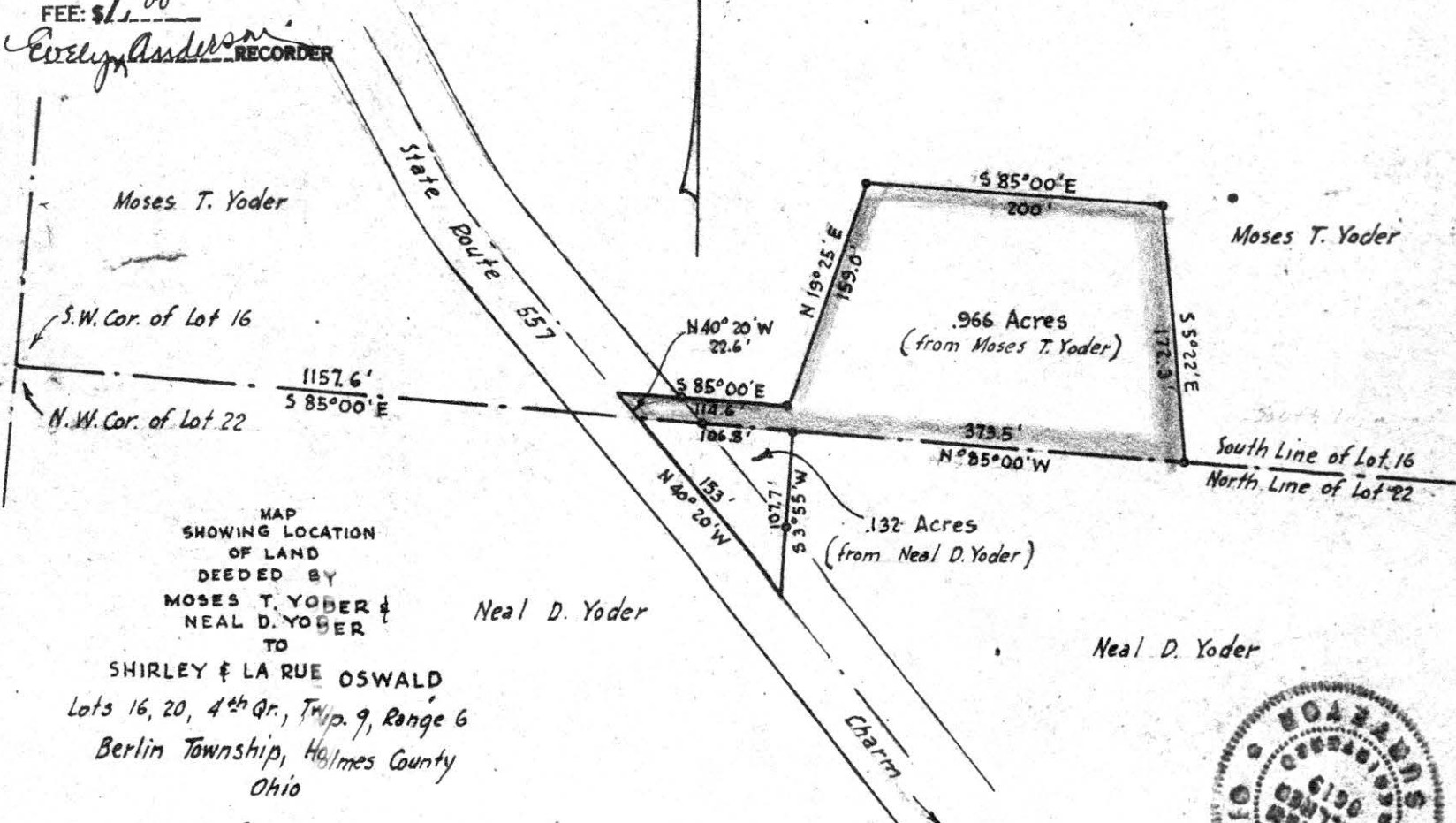
AT 1:55 O'CLOCK P.M.

RECORDED: July 12, 1960.

HOLMES CO. Plat VOL. 3 PG. 26

FEE: \$1.00

Evelyn Anderson
RECORDER



MAP
SHOWING LOCATION
OF LAND
DEEDED BY
MOSES T. YODER &
NEAL D. YODER
TO

SHIRLEY & LA RUE OSWALD
Lots 16, 20, 4th Qr., Twp. 9, Range 6
Berlin Township, Holmes County
Ohio

Scale 1" = 100 ft. June 1960

Drawn from a survey by William Sellner
Reg. Sur. No. 3915

