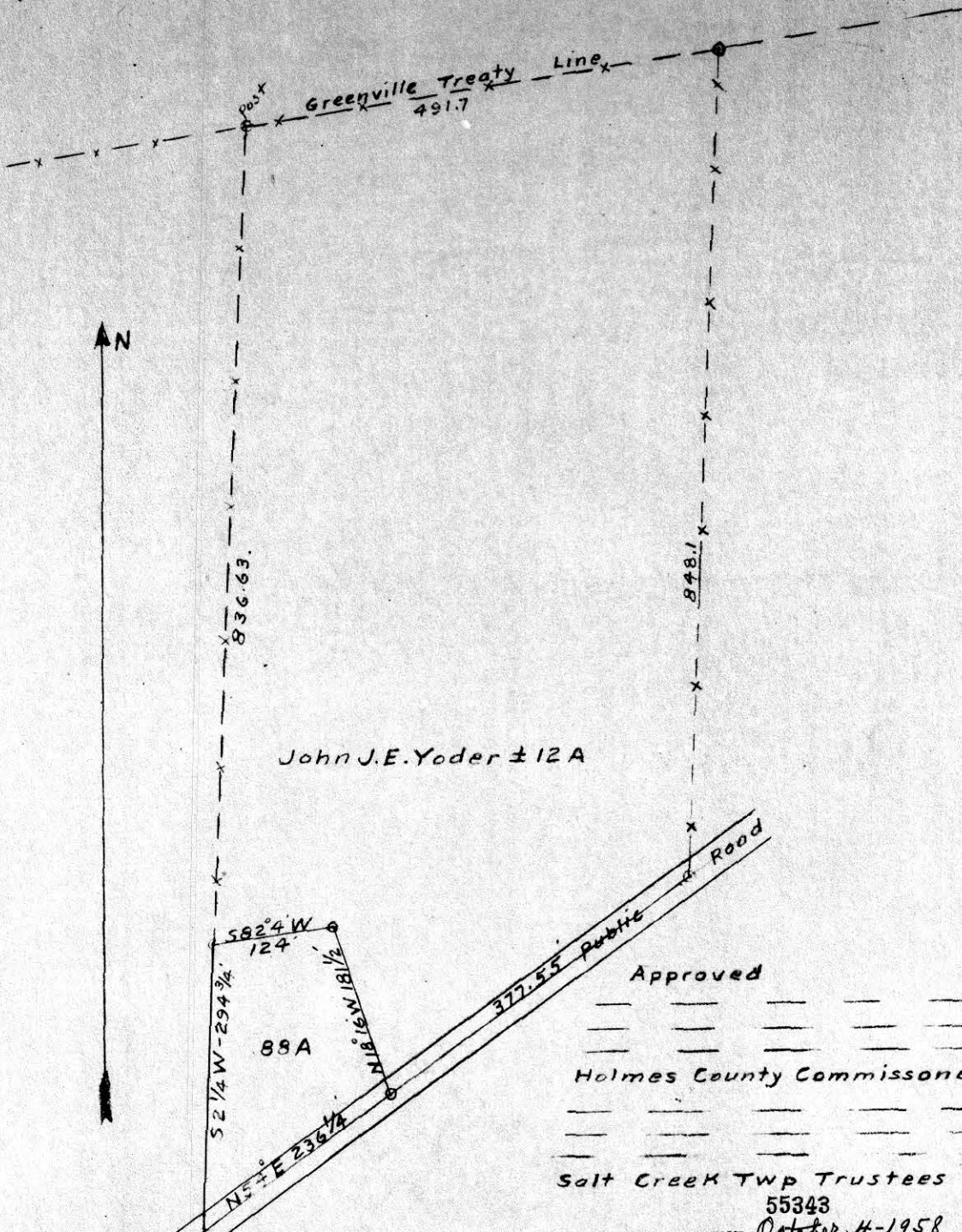
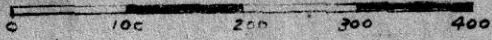


FOR ROMAN SCHLABACH.
HOLMES COUNTY, T10. R6,
3RD QTR, SALT CREEK TWP.

SCALE 1"=100 FEET.

JULY 21, 1958.



Approved

Holmes County Commissioners

Salt Creek Twp Trustees

55343

RECTD: October 4-1958

AT 11:50 O'CLOCK A.M.

RECORDED: October 6, 1958

HOLMES CO. VOL. 3 PG. 29

FEE: \$1.95

Evelyn Anderson RECORDER



Rolland L. Mary

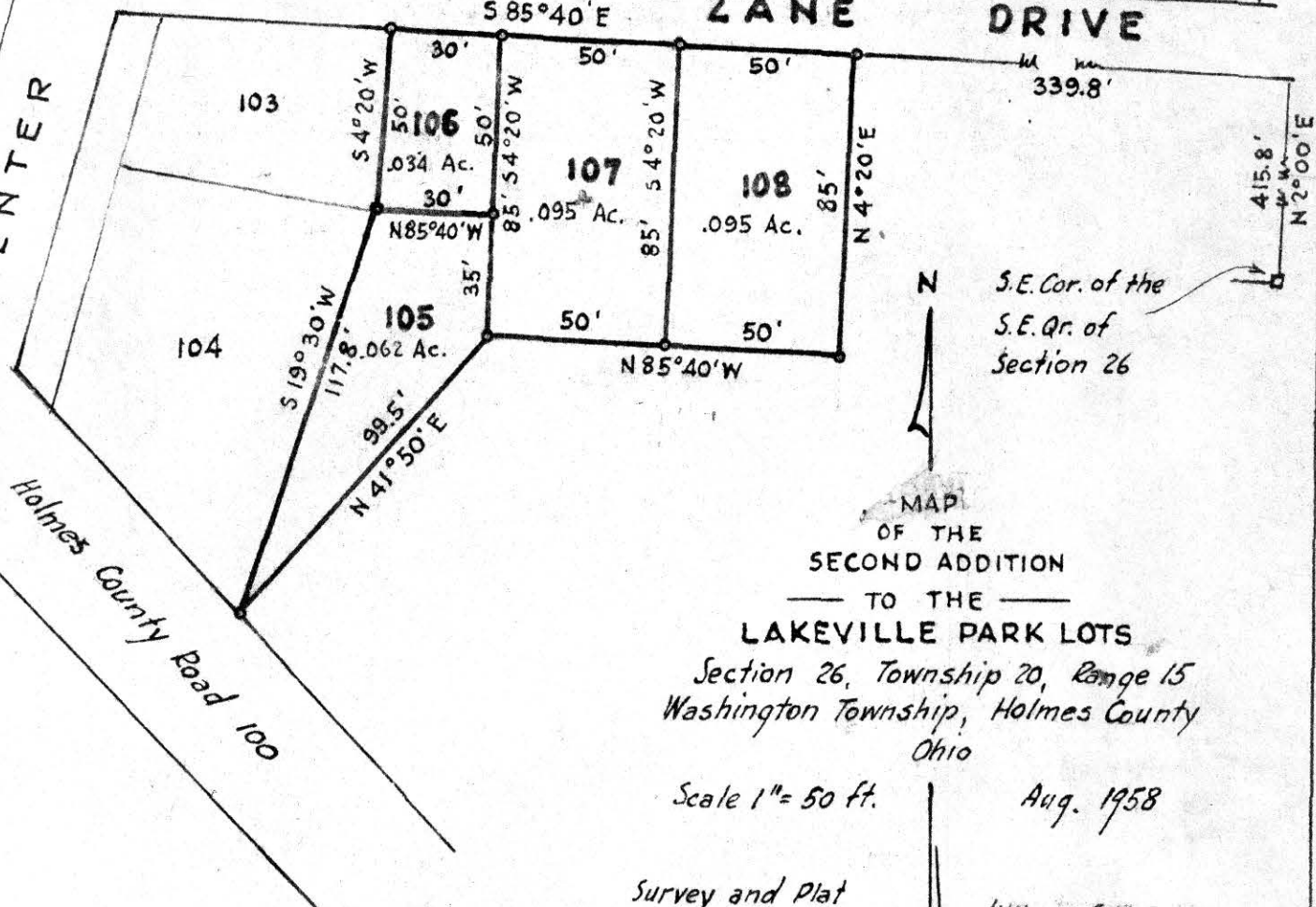
See Holmes County Recorder's
Plat Book No. 2 for plats of
Original Lakeville Park Lots (1924)
and First Addition Lots (1958)

DRIVE 30'

86 87 88 89 90 91 92 93 94

ZANE DRIVE

CENTER



Holmes County Road 100

S.E. Cor. of the
S.E. Qr. of
Section 26

MAP
OF THE
SECOND ADDITION
TO THE
LAKEVILLE PARK LOTS
Section 26, Township 20, Range 15
Washington Township, Holmes County
Ohio

Scale 1" = 50 ft. Aug. 1958

Survey and Plat
certified correct by William Sellner
Reg. Sur. No. 3715

This plat accepted this 15 day of Aug. 1958
H. E. Gray
County Auditor

Plat received for record the ___ day of Aug. 1958
Recorded in plat book ___ Page ___

County Recorder

55047
REC'D: August 16-1958
AT 8:30 O'CLOCK H.
RECORDED: August 16-1958
HOLMES CO. Plats VOL. 3 PG. ___
FEE: \$1.00
Cathy Anderson RECORDER