

54962

Received August 8 1958

At 10:40 o'clock H. M.

Recorded August 8 1958

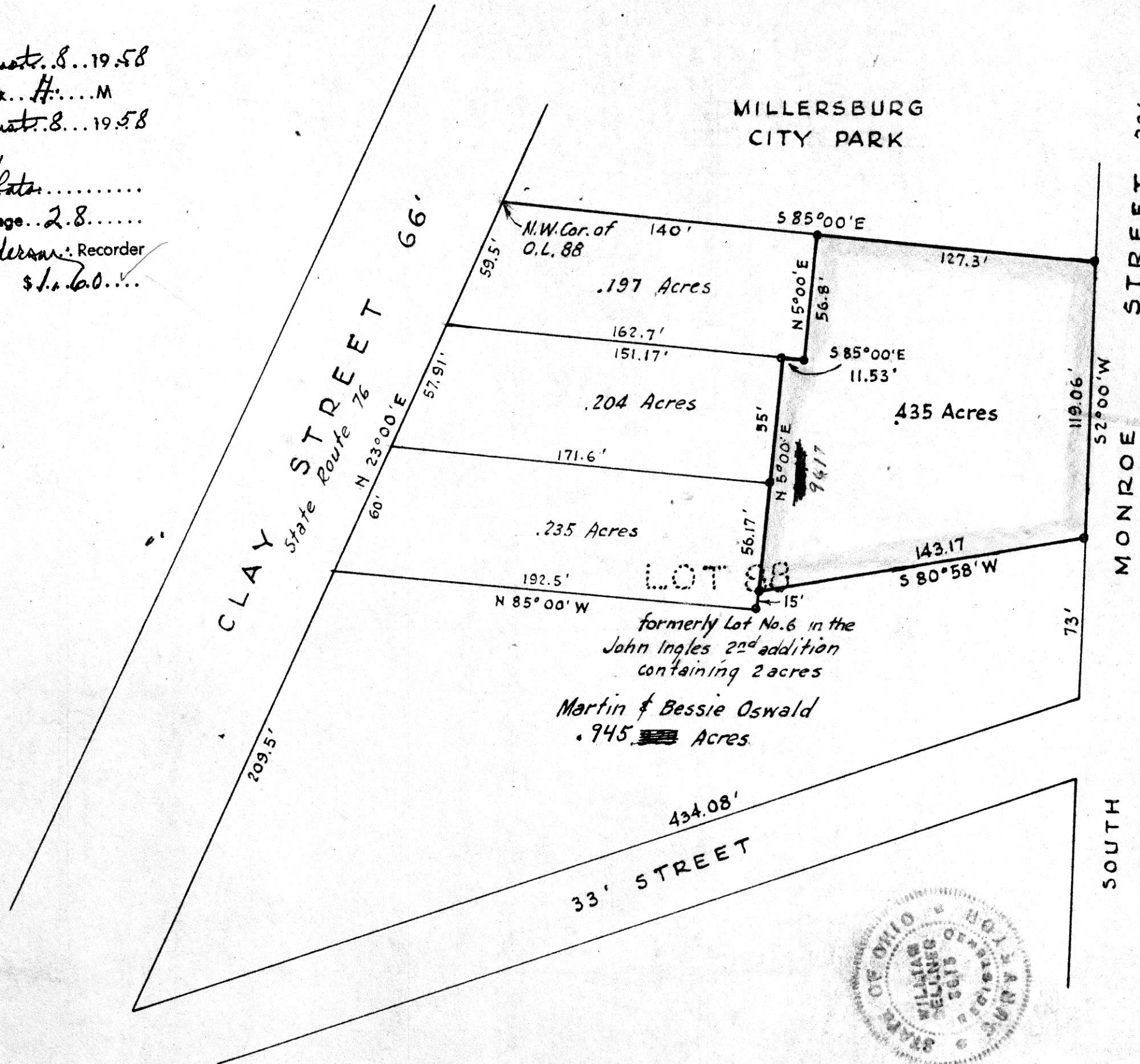
In Holmes County

Record of ... Plats

Vol. 3 Page 28

Evelyn Anderson Recorder

Recorder's Fee \$1.60



MAP
SHOWING LOCATION
OF A PARCEL OF LAND
DEEDED BY
MARTIN & BESSIE OSWALD
TO
CORLISS & VELMA OSWALD
ON
South Monroe Street
Village of Millersburg
NE 1/4 Sec 19 3rd Or. Township 9, Range 7
Hardy Township, Holmes County
Ohio

Scale 1" = 50 ft. July 1958

Drawn from a survey and records by *William Sellner*
Reg. Sur. No. 3915

