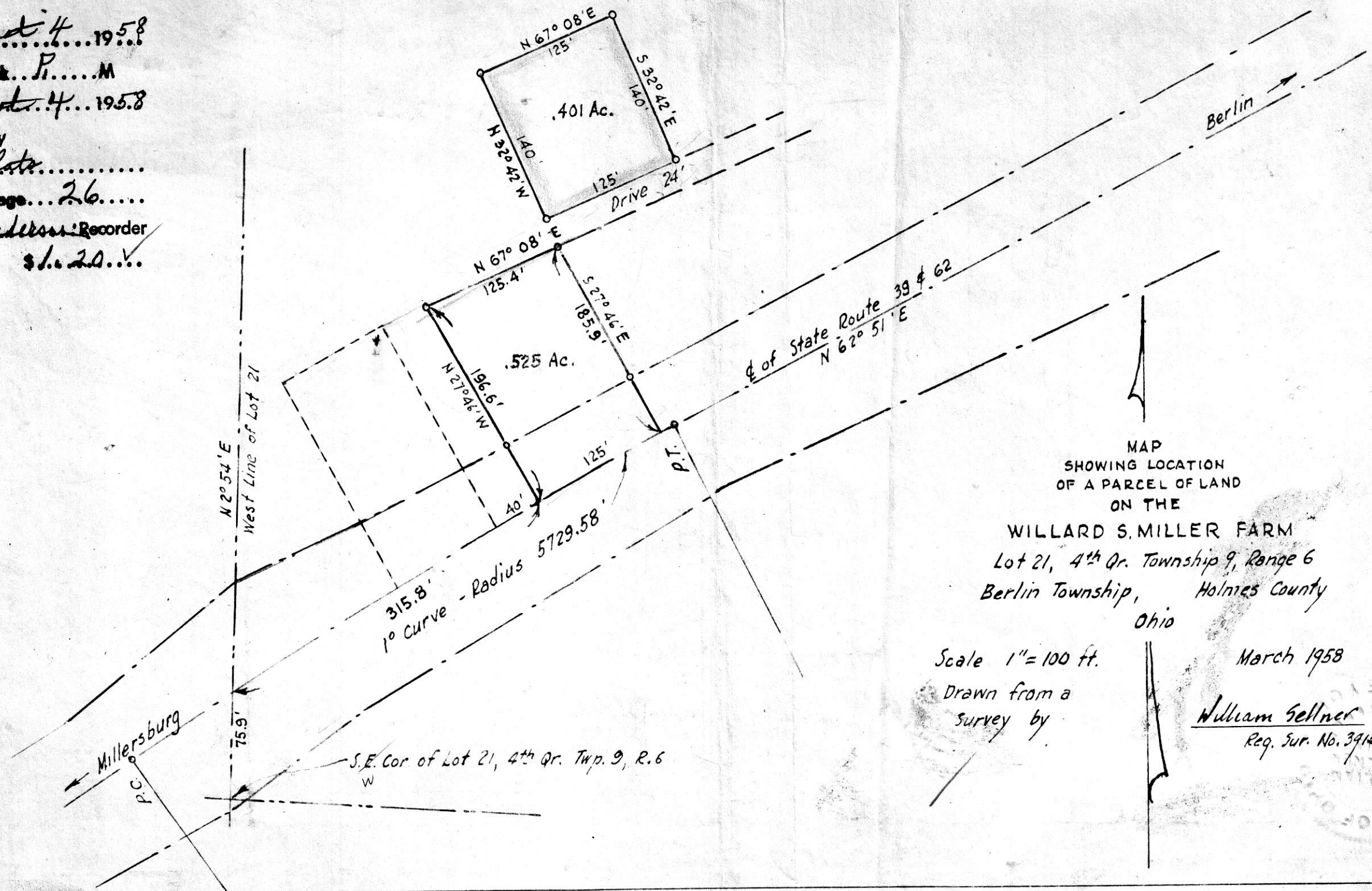


54917

Received *August 4* 1958  
 At *2:45* o'clock *P.* M.  
 Recorded *August 4* 1958  
 In Holmes County  
 Record of *Plats*  
 Vol. *3* Page *26*  
*W. Lynn Anderson* Recorder  
 Recorder's Fee \$*1.20*



MAP  
 SHOWING LOCATION  
 OF A PARCEL OF LAND  
 ON THE  
 WILLARD S. MILLER FARM  
 Lot 21, 4<sup>th</sup> Qr. Township 9, Range 6  
 Berlin Township, Holmes County  
 Ohio

Scale 1" = 100 ft.  
 Drawn from a  
 survey by

March 1958  
*William Sellner*  
 Reg. Sur. No. 3915