

MAP
SHOWING DIVISION
OF

LOT 533
VILLAGE OF MILLERSBURG
Section 19, Township 9, Range 7,
Hardy Township, Holmes County
Ohio

Scale 1" = 50 ft.

Nov. 1957

Drawn from a
survey by

William Sellner
Reg. Sur. No. 3915

54878

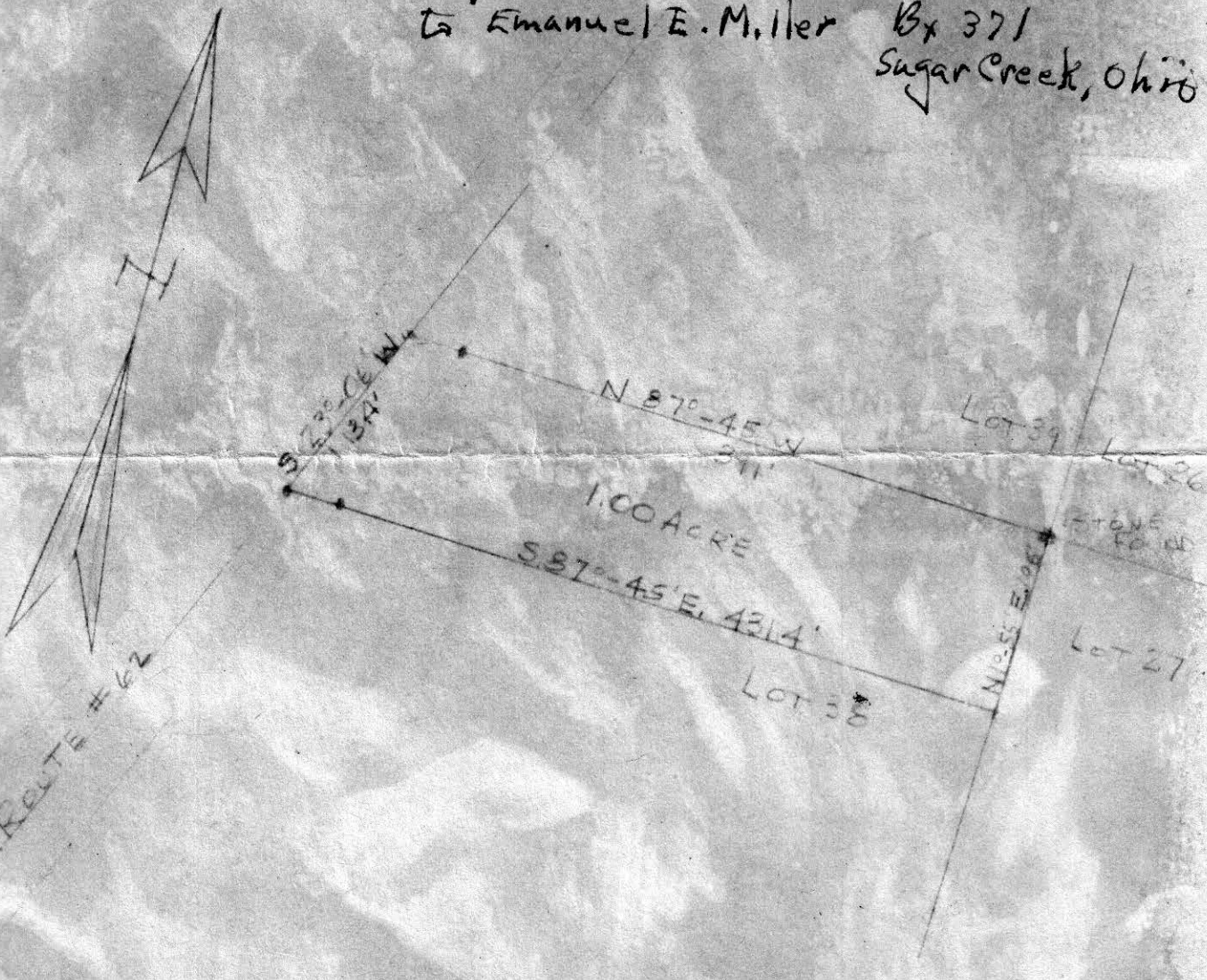
Received July 26, 1958, At 11:40 o'clock A. M.

Recorded July 26, 1958, In Holmes County

Record of Plats Vol. 3, Page 25

C. Evelyn Anderson RECORDER Recorder's Fee \$ 1.00

Deeded by Clifford Amos, ~~met a~~
to Emanuel E. Miller Bx 371
Sugar Creek, Ohio



55378

SURVEY OF PART OF LOT 38
THIRD QUARTER TOWNSHIP 10, RANGE 4
PAINT TOWNSHIP HOLMES COUNTY, OHIO
SURVEY BY R.C. SCHNEIDER #4177 AND
R.H. HUNSINGER #3685, REGISTERED SURVEYORS
SCALE 1" = 100' AUGUST 29, 1958

REC'D: October 10-1958
AT 2:50 O'CLOCK P.M.
RECORDED: October 10-1958
HOLMES CO. 21 VOL. 3 PG. 25
FEE: \$ 1.00

Evelyn Anderson RECORDER

