

OWNERS DEDICATION:

We the owners do hereby declare that we had this land surveyed and platted and that by signing this plat we dedicate as a public road Zane Drive, said road containing .32 of an acre

Signed this 23 day of April 1958

Witness: G. B. Darling Zane Wigton
Missura Darling Rolda Wigton
Robert J. Mober
Mary L. Meyer

State of Ohio :

Holmes County: Before me a notary public in and for said county and state personally appeared the owners of this property, who acknowledged that they did sign this plat for purposes herein shown and that the same was their free act and deed

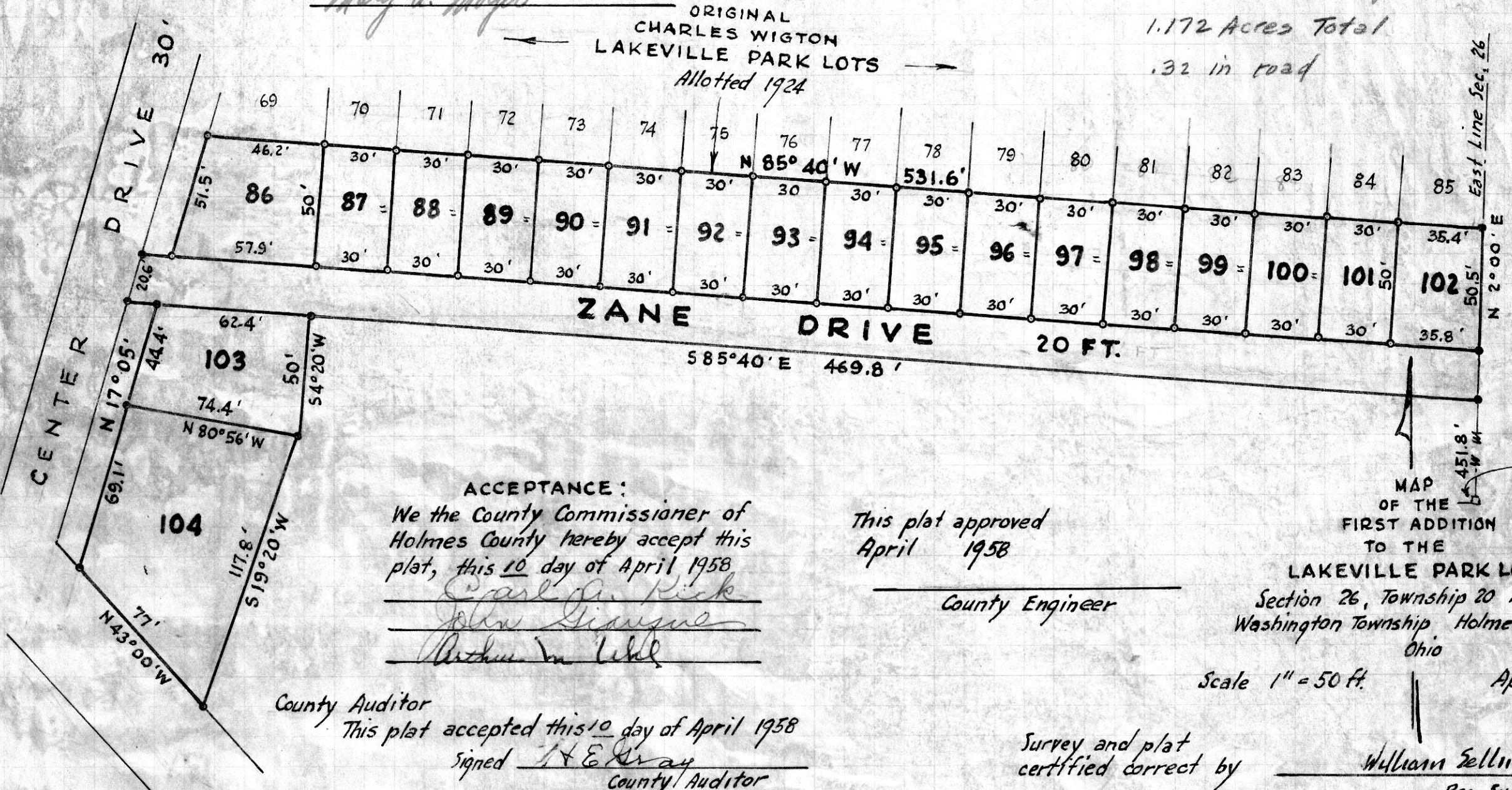
Signed this 23 day of April 1958

G. B. Darling
 Notary Public



1.172 Acres Total

.32 in road



ACCEPTANCE:

We the County Commissioner of Holmes County hereby accept this plat, this 10 day of April 1958

Carl G. Rick
John S. Searles
Arthur W. Loh

County Auditor

This plat accepted this 10 day of April 1958

Signed H. E. Gray
 County Auditor

County Recorder

This plat received for record the ___ day of April 1958

Recorded in plat book page
Evelyn Anderson
 County Recorder

This plat approved
 April 1958

County Engineer

MAP OF THE FIRST ADDITION TO THE

LAKEVILLE PARK LOTS
 Section 26, Township 20 Range 15
 Washington Township, Holmes County
 Ohio

Scale 1" = 50 ft.

April 1958

Survey and plat certified correct by

William Sellner

Reg. Sur. No. 3915

Iron pins set ●
 stakes set ○

Transferred May 19-1958

Received May 24, 1958, At 54374 10:45 o'clock A. M.
 Recorded May 24, 1958, In Holmes County
 Record of Plats Vol. 3, Page 21
Evelyn Anderson RECORDER Recorder's Fee \$ 1.85