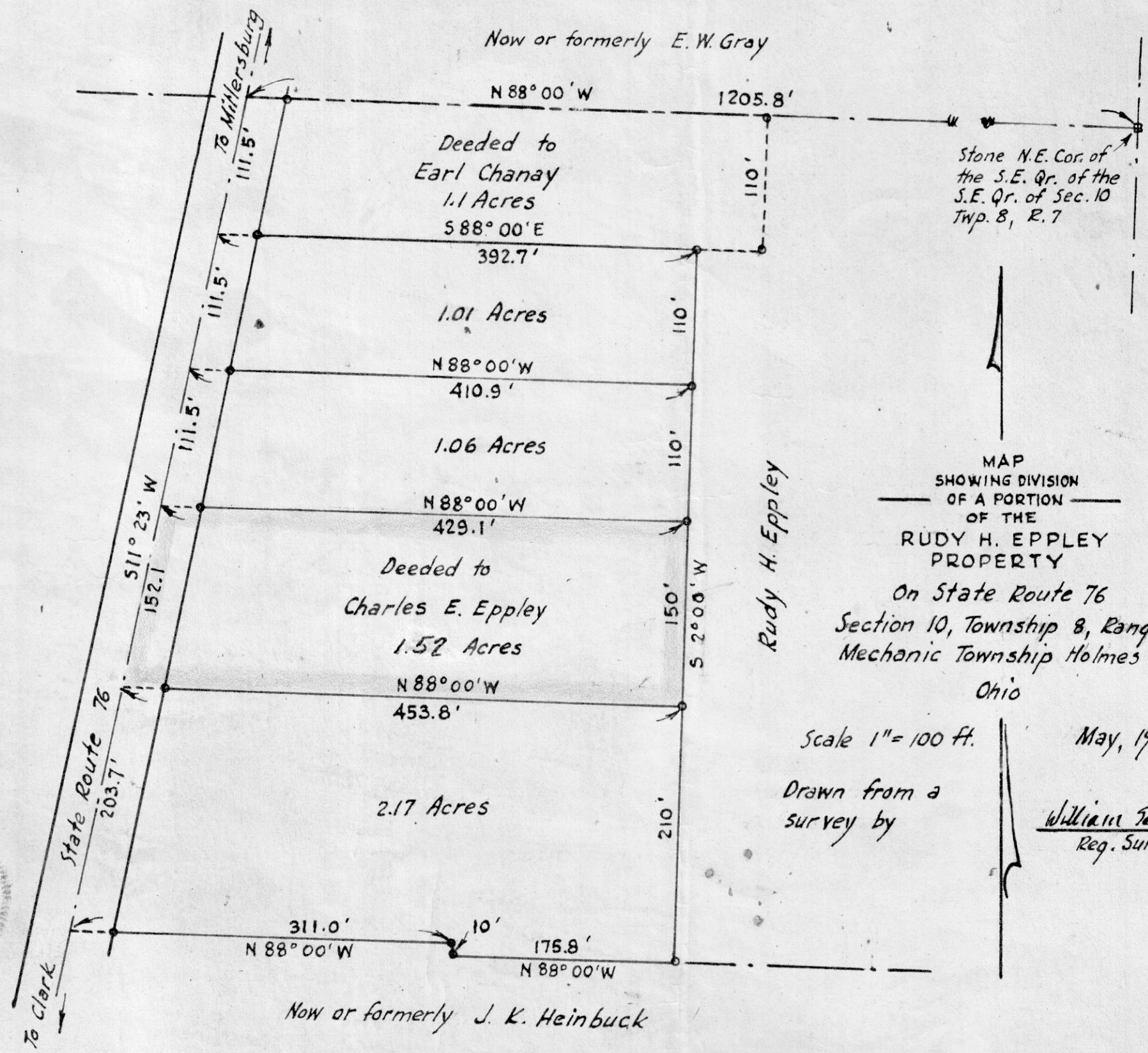


54310

Received *May 17* 1958
At *J. L. S. O'Connell* H. M.
Recorded *May 17* 1958
In Holmes County
Record of *Plats*
Vol. *3* Page *20*
C. E. Eppley Recorder
Recorder's Fee \$ *1.60*



MAP
SHOWING DIVISION
OF A PORTION
OF THE
RUDY H. EPPLEY
PROPERTY
On State Route 76
Section 10, Township 8, Range 7
Mechanic Township Holmes Ct.
Ohio

Scale 1" = 100 ft.
May, 1958
Drawn from a survey by
William Bellner
Reg. Sur. No. 3915



Now or formerly J. K. Heinbuck