

54212
 Received... *May 1st*... 19*58*
 At *9:40* o'clock *A.*.....*M.*
 Recorded... *May 1st*... 19*58*
 In Holmes County
 Record of... *Plats*.....
 Vol. *3*..... Page *17*.....
Evelyn Anderson, Recorder
 Recorder's Fee \$ *1.00*.....

54215

Received May 1st 1958

At 3:25 o'clock P.M.

Recorded May 1st 1958

In Holmes County

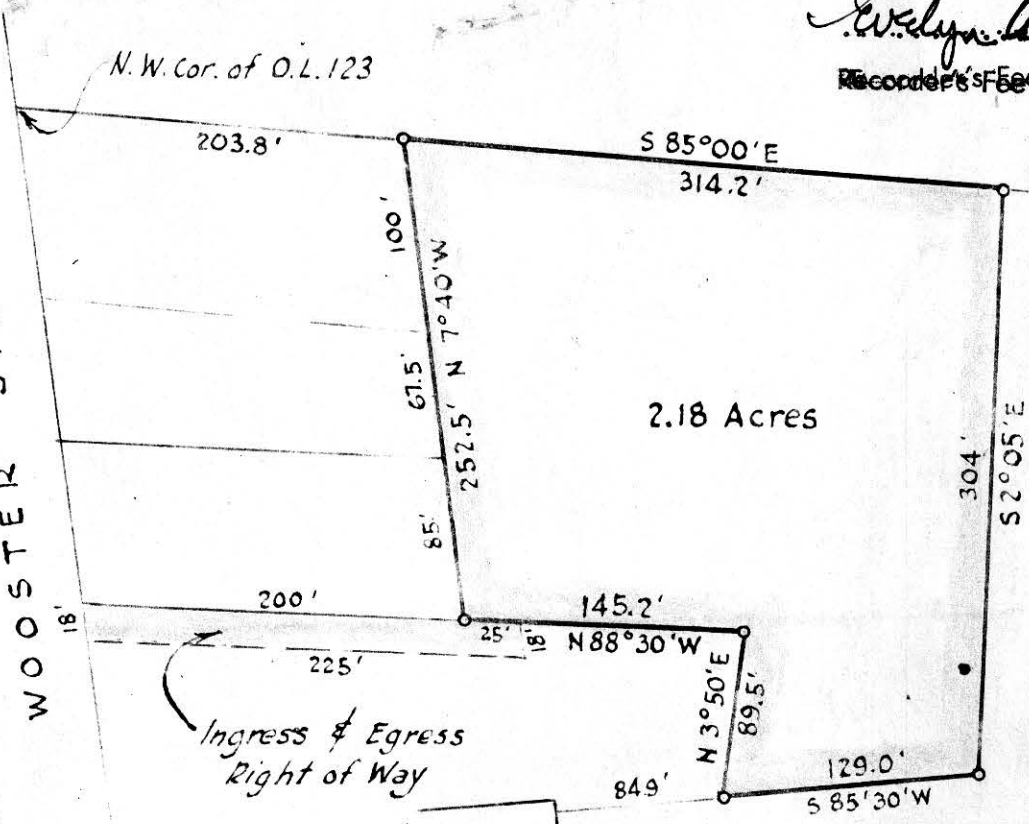
Record of Plat

Vol. 3 Page 17

W. Lynn Anderson Recorder

Recorder's Fee \$1.00

WOOSTER STREET



2.18 Acres

Horace R. & Althea Maxwell

N Horace R. & Althea Maxwell



MAP SHOWING LOCATION OF A PARCEL OF LAND DEEDED BY H.C. & V.E. ROTTMAN TO

HORACE R. & ALATHEA MAXWELL Part of O.L. 123, Village of Millersburg Military Lands, Lot 42, Township 9, R. 7 Hardy Township, Holmes County Ohio Scale 1" = 100 ft.

April, 1958

Drawn from a survey by

William Sellner

Reg. Sur. No. 3915

