

MAP  
SHOWING LOCATION  
OF A  
PARCEL OF LAND  
DEEDED BY  
FRED & PHYLLIS HUEBNER  
TO

D. P. TAYLOR  
Lot 18, 4<sup>th</sup> Qr, Twp. 10, Range 6  
Salt Creek Twp., Holmes County  
Ohio

Scale 1" = 50 ft.  
Drawn from  
a survey by

April 1958  
*William Zellmer*  
Reg. Sur. No. 3915

54140

Received *April 17* 1958  
At 9:45 o'clock *A.* M.  
Recorded *April 17* 1958  
In Holmes County  
Record of *Plats*  
Vol. 3 Page 15  
*Coselyn Anderson* Recorder  
Recorder's Fee \$1.00

54150

Received *April 21* 1958

At *1:00* o'clock *H* *M*

Recorded *April 21* 1958

In Holmes County

Record of *Plats*

Vol. *3* Page *15*

*Evelyn Anderson* Recorder

Recorder's Fee \$*70.00*

S 85°00' E - 36'  
Quarter Section Line

N 28°00' W  
245.5'

Killbuck Creek  
984.0'

N 7°00' E  
815.1'

Ralph Hipp

Holmes County Fair Board  
4 Acres

5.47 Acres

MAP  
SHOWING LOCATION  
OF A PARCEL OF LAND  
DEEDED BY  
LAWRENCE SMITH  
TO

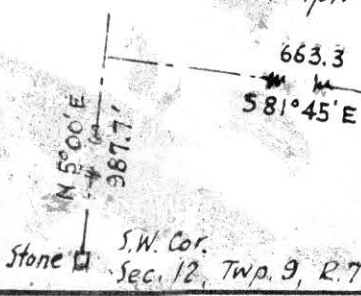
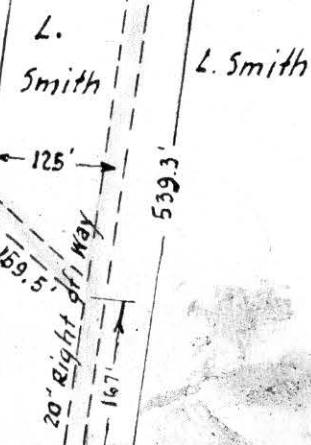
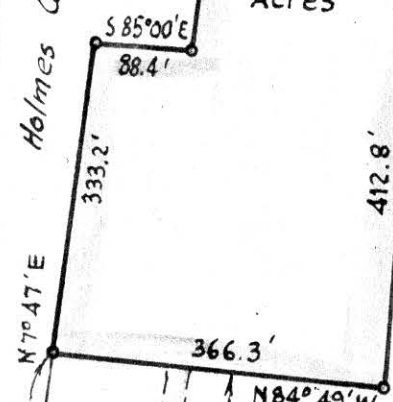
HOLMES COUNTY FAIR BOARD  
Section 12, Township 9, Range 7  
Hardy Township, Holmes County  
Ohio

Scale 1" = 200 ft.

April 1958

Drawn from a  
survey by

*William Sellner*  
Reg. Sur. No. 3915



State Route 39

Millersburg

Holmes County Infirmary

Township Road

244

S 89° 00' W  
2519.4

N.E. Cor. of the  
N.W. Qr. of  
Fractional  
Section 14

59651

REC'D: Oct. 21, 1960

AT 10:43 O'CLOCK A.M.

RECORDED: October 25, 1960

HOLMES CO. PIAT VOL. 3 PG. 15

FEE: \$1.00

Evelyn Anderson, RECORDER  
S.A.

O. D.  
~~Richard~~ McCluggage

S 5° 42' E  
306'

State Route 76

N 5° 42' W  
150'

S 85° 37' E  
290.4'

Pipe

290.4'

290.4'

N 85° 37' W

Pipe

150'

S 5° 42' E

1 Acre  
No Buildings

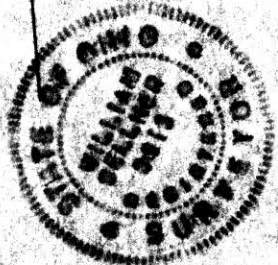
~~Richard~~ McCluggage

Millersburg



MAP  
SHOWING LOCATION  
OF A PARCEL OF LAND  
DEED BY  
O. D. ~~Richard~~ MCCLUGGAGE  
TO

John M. Shafer and Madalyn Shafer  
Section 14, Township 13, Range 13  
Praire Township, Holmes County  
Ohio



Scale 1" = 100 ft.

Oct. 1, 1960

Drawn from a  
survey by

William Sallner  
Reg. Sur. No. 3915